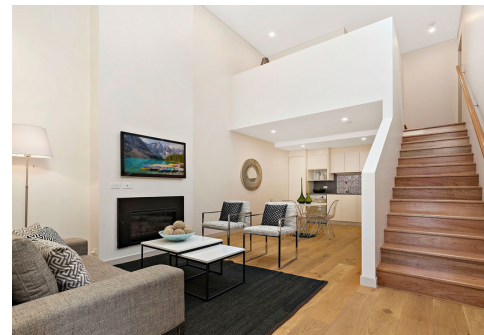




## A Sandstone Masterpiece



## 1/13-15 Briggs Street, Camperdown

### Rented

Although in a quiet urban street, this brand new dual level home sits proudly among the excitement that Camperdown and Newton have to offer, an enviable lifestyle location.

Behind the handsome facade this quality home boasts a generous floor plan highlighted by soaring ceilings, great use of space accentuating functionality with a warm cool feeling throughout.

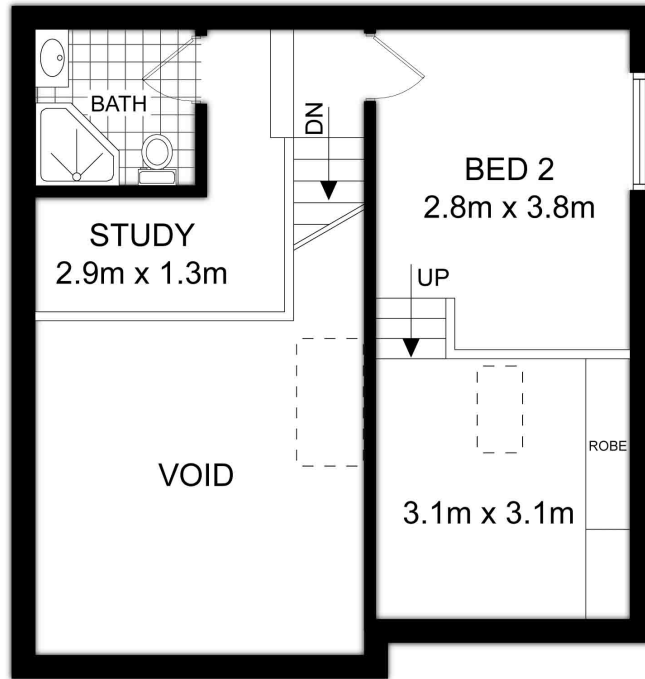
#### Features:

- Additional study, two master bedrooms, one with ensuite and built-ins and the other with walk in robe.
- Flowing open plan living interiors featuring timber floors and gas fire place
- Stunning kitchen with dishwasher laundry with dryer and two bathrooms plus add. toilet
- North facing front porch and within walking distance to King Street and the 'Commons' alongside Camperdown Park

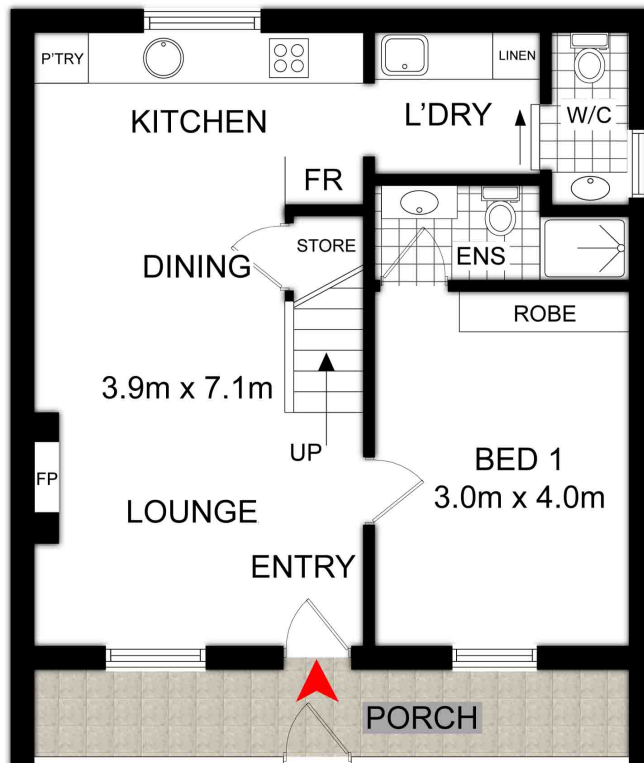
Pets Not Permitted.

**Property ID:** R138079  
**Property Type:** Townhouse  
**Building / Floor Area:** 92

**Elizabeth Casamento**  
0412 284 931  
elizabeth@powerof4leight.com.au



**FIRST FLOOR**



**GROUND FLOOR**



<p>DISCLAIMER: THIS IS FOR ILLUSTRATIVE PURPOSES ONLY. ALL DIMENSIONS ARE APPROXIMATE AND IT DOES NOT CONSTITUTE PART OF ANY LEGAL DOCUMENTS.</p>	<p><b>ADDRESS:</b>  <b>1/13-15 BRIGGS STREET, CAMPERDOWN</b></p>
---	--