



Ultra-contemporary chic



2



1



1

10/188 Elswick Street, Leichhardt

Rented

Peacefully set in boutique complex this light filled designer apartment offers quality, space and comfort. Flowing open plan living, sleek modern kitchen, massive attic storage areas and perfectly located to nearby Norton street eateries, Leichhardt village, schools, parks and city bound bus transport this is chic inner west living.

- Generous bedrooms with built-ins
- Spacious open plan living
- stylish kitchen with s/steel Smeg fittings, dishwasher
- Internal laundry
- large private balcony
- Intercom entrance,
- secure undercover car space,
- ducted air conditioning throughout

Property ID: R137957

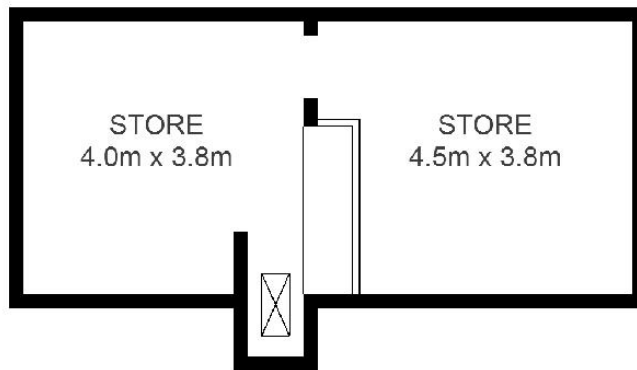
Property Type: Apartment

Garages: 1

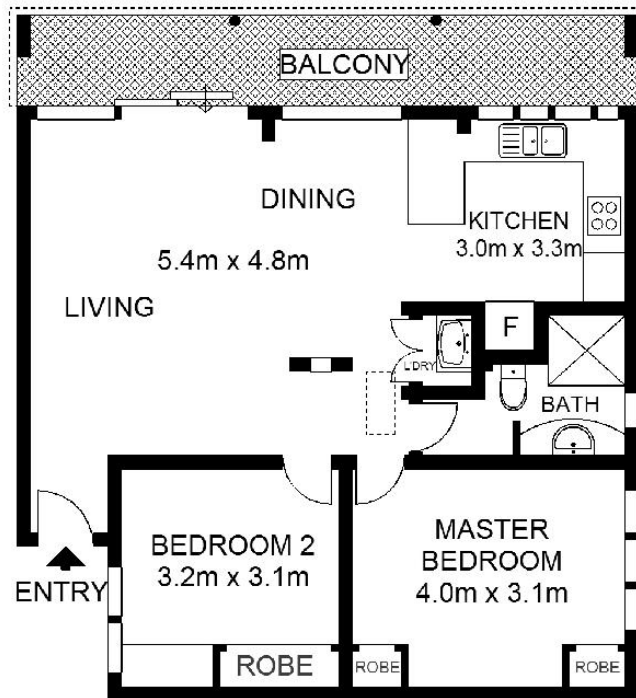
Elizabeth Casamento

0412 284 931

elizabeth@powerof4leichhardt.com.au



UPPER FLOOR



SECOND FLOOR



Scale shown in metres. All dimensions herein are approximate and gathered from sources believed to be reliable. Whilst every effort is made for the accuracy of our floor plans, interested parties should rely on their own enquiries. Floor Plans by Industrie Media | industriemedia.tv