



CROYDON PARK
30/135 Croydon Avenue

2  1  1 

District Views

Sold for \$550,000 (Jun 01, 2019)



Tucked at the rear and surrounded by the lush gardens, this 2 bedroom top floor unit with district views and sun drenched pool awaits a new owner.

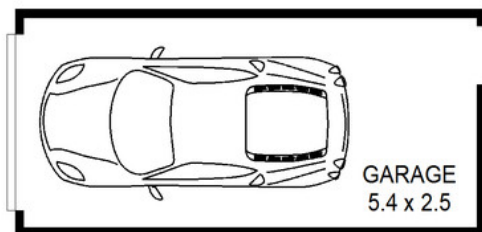
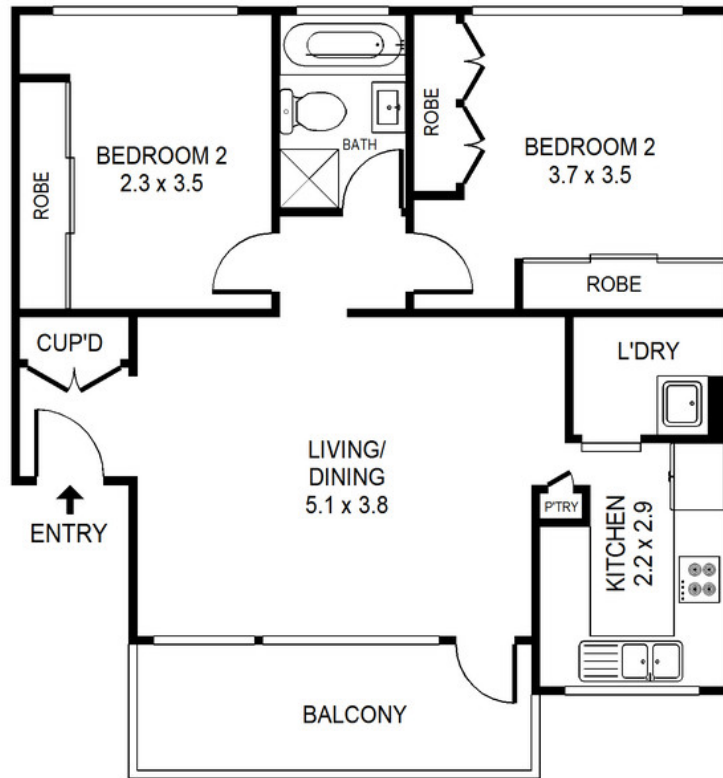
Features:

- Two good sized bedrooms with large windows and built in robes
- Combined dining and living area flowing to a northerly balcony
- Modern kitchen with stone bench tops and stainless steel appliances
- Original full bathroom, separate laundry and a lock up garage
- Short stroll to Croydon Park village, city bound bus services, schools and parkland

| | |
|-----------------------|----------|
| Property ID: | 20603968 |
| Property Type: | Unit |
| Garages: | 1 |

AGENT

Tony Andreatchio
 0418967900
 tony@rhashfield.com.au



30/135 Croydon Avenue, Croydon Park

Raine&Horne.

Note: floor plan measurements are approximate and are intended for illustrative purposes only