



## EXECUTIVE BEACH-SIDE LIVING



3



2



2

## 1/82 Sandy Place, Long Beach

Sold for \$745,000 (May 28, 2019)

With direct beach access in a sought after cul-de-sac, Sandy Place Long Beach offers relaxed beach-side living with calm, sandy shores in an exclusive location.

This stylish duplex provides the ideal lock up and go lifestyle and is so low maintenance all you will need to do when you arrive is drop your bags, kick back and relax.

Fitted with quality finishes such as timber flooring, plantation shutters throughout, reverse cycle air conditioning and an open plan lounge, dining and kitchen with high ceilings and access onto the deck overlooking the water and beachfront reserve.

Three bedrooms downstairs, master with ensuite and access onto rear patio.

Double lock up garage with internal access.

Escape to Paradise, occasionally or permanently – the choice is yours!

**Property ID:** 20525994

**Property Type:** House

**Garages:** 2

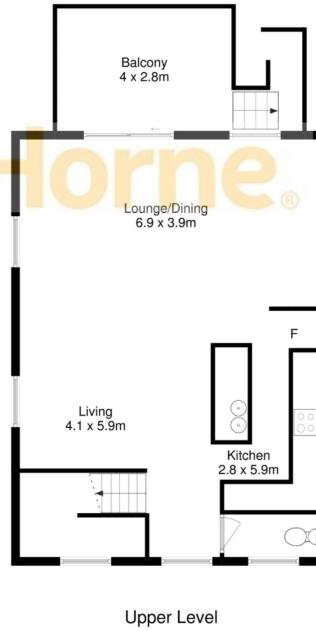
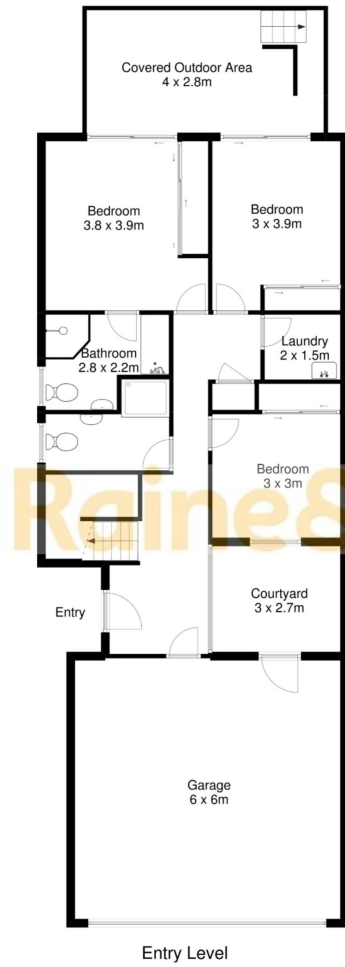
**Kate Quinlivan**

0413934745

kate@rhbatemansbay.com.au

# Raine & Horne®

Measurements are approximate and not to scale.  
For illustrative purposes only.  
Approximate floor area 220 square metres



**SCP**  
south coast pix