



SURF BEACH
6 Johnson Place

4  3  2 

BIG HOUSE, BIG DREAMS


Set in a quiet cul-de-sac just a few streets away from the rolling waves of Surf Beach sits this prodigious two-storey, four bedroom rendered brick home. The proportions of this larger-than-life family home are absolutely perfect, with a clever design allowing complete separation between the living zones downstairs and the bedrooms upstairs. The first floor features all four bedrooms including a generous master suite with built in robes, ensuite and private balcony while three bedrooms with built in robes, a family bathroom and a second private balcony make it a private and peaceful sanctuary. The ground floor boasts three separate zones including a well equipped kitchen with granite benchtops, private family room, large open living room and third

bathroom in the laundry. A single lock up garage with internal access and second single garage with drive through access to the back yard provide ample space for multiple cars, the boat, motorbikes and more. This spacious family home is just 300m to the local shops and less than 500m to Surf Beach and is ready to move into and head for the beach just in time for summer!

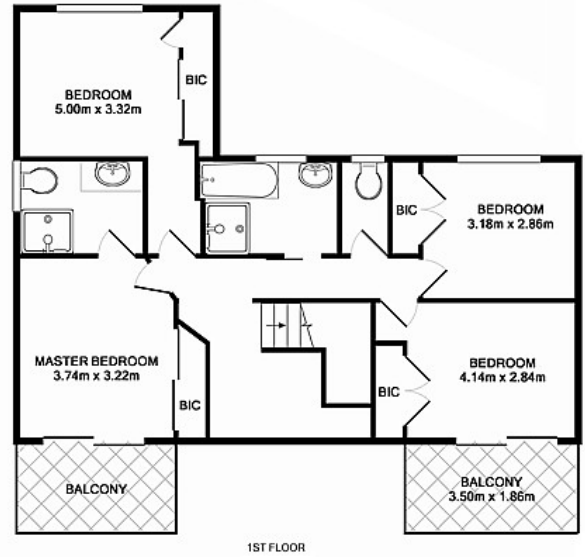
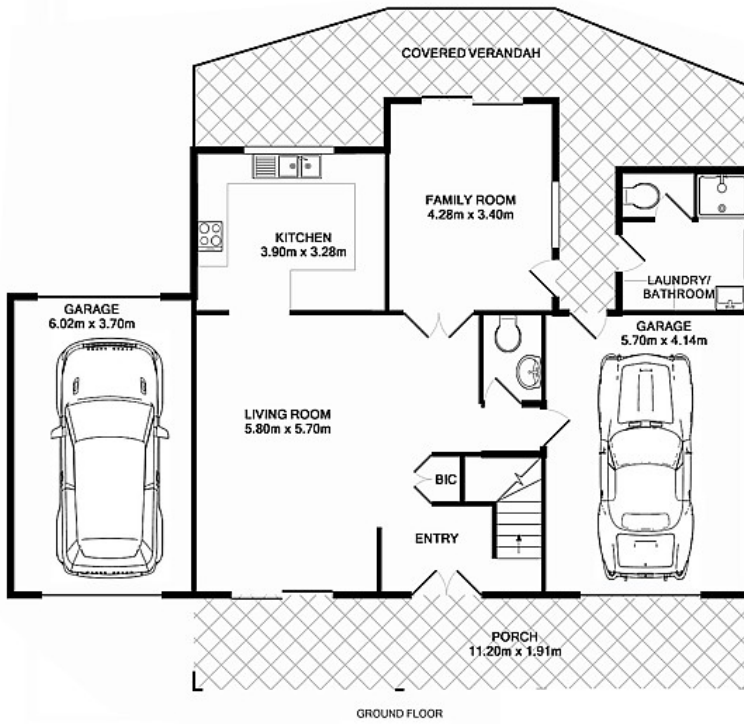
Property ID	L748748
Property Type	House
Garages	2
Land Area	656.2 sqm

AGENT

Aristotle Stauros

 0408 612 914

 aristotle@rhbatemansbay.com.au



TOTAL APPROX. FLOOR AREA 196.6 SQ.M.

Whilst every effort has been made to ensure the accuracy of the floor plan depicted here, measurements are approximate and no responsibility is taken for any error, omission, or mis statement. This plan is for illustrative purposes only.