



## STYLISH & SPACIOUS FAMILY HOME



5



2



2

## 90 Wentworth Drive, Kelso

Sold for \$750,000 (Feb 10, 2021)

A stylish and sophisticated family haven situated in the popular Marsden Heights Estate is now available for you to own. Set on a generous 886sqm block with side access and stunning views over Bathurst and towards the iconic Mt Panorama, this impressive property offers great living spaces, quality fittings and fixtures and five bedrooms making it ideal for the larger or growing families. Sure to surpass your expectations, an inspection is a must. Call and plan your move today!

Features include but are not limited to:

- Open concept kitchen, meals and family area
- Gourmet kitchen with stone benches, 900mm oven and butler's pantry
- Spacious separate living room with stunning views over town
- Four generously sized bedrooms with built-in robes
- Great study room or potential fifth bedroom
- Luxurious walk-in robe and ensuite to the master bedroom

Property ID: L5135711

Property Type: House

Garages: 2

Land Area: 886.0 sqm

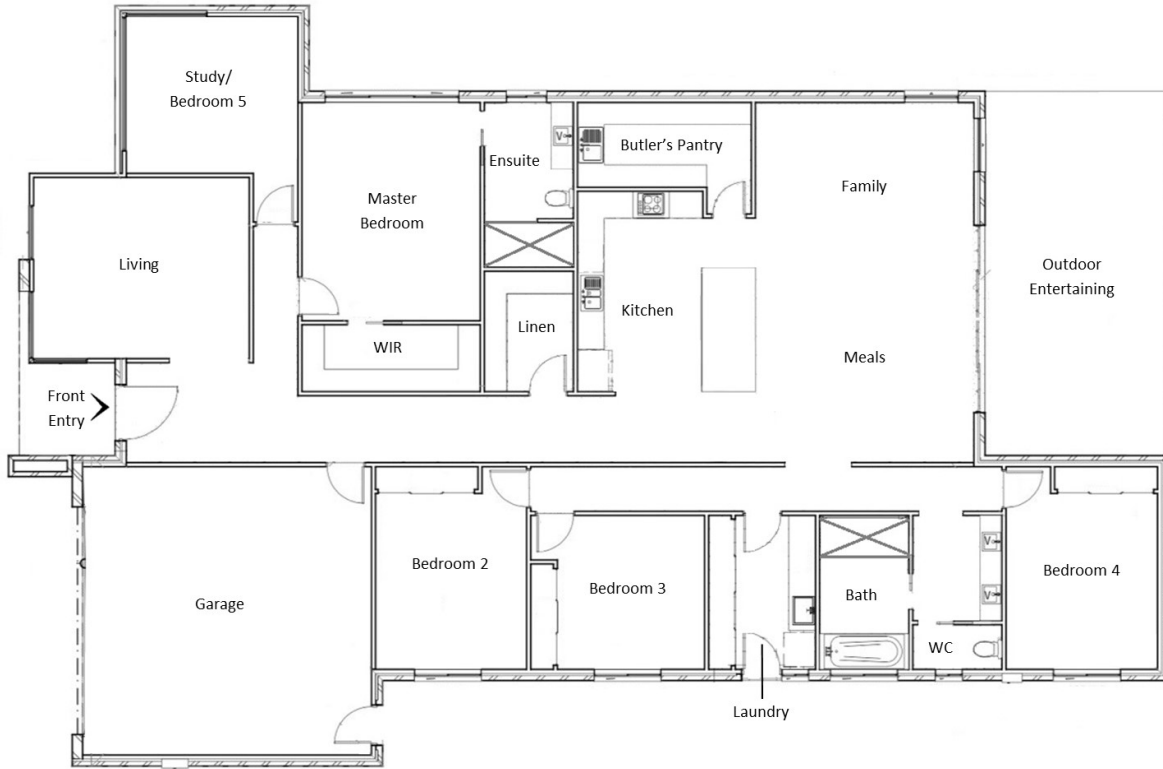
**Grant Maskill-Dowton**

0459406206

grant.maskill-

dowton@bathurst.rh.com.au

- Three-way family bathroom with double sink vanity and floor-to-ceiling tiles
- Ducted gas heating and ducted electric cooling
- Hydronic underfloor heating to the bathrooms, laundry and living areas
- Polished concrete flooring through the main living area and hallways
- Plantation shutters throughout
- Extensive under-roof alfresco entertaining area
- Double automatic garage with internal access
- Side access to the fully-enclosed and level rear yard



**Disclaimer:** Floor plan dimensions are approximate. Indicative only. All information contained herein is gathered from sources we believe to be reliable, however are to be used as a guide only, we cannot guarantee its accuracy and interested persons should rely on their own enquiries.