



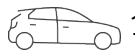
Town House in the Heart of Berry



2



2



1

1/78 Queen Street, Berry

Sold for \$742,500 (Aug 12, 2020)

Enjoy the village atmosphere at your doorstep. This perfectly positioned townhouse is private and tranquil while still being centrally located making it ideal as a holiday rental or your home in the heart of Berry. Set off the street with a private, north facing courtyard and deck that are ideal for entertaining. "Matilda Cottage" is currently a successful holiday property that is well maintained and operated by the owner. Upstairs are two large bedrooms and two bathrooms. Downstairs is an open plan living room with modern kitchen and dining room. There is an internal laundry with a convenient powder room downstairs for guests and easy access to Berry's boutique shopping and stunning cafes and restaurants.

Other features:

Large garage with extra storage

Lovely outlook from back deck and access to the park

Front deck and courtyard north facing and private

Handcrafted external shower – great for after the beach

Internal laundry and extra powder room

Property ID: L978419

Property Type: Townhouse

Garages: 1

Mira Edwards

0414 247 863

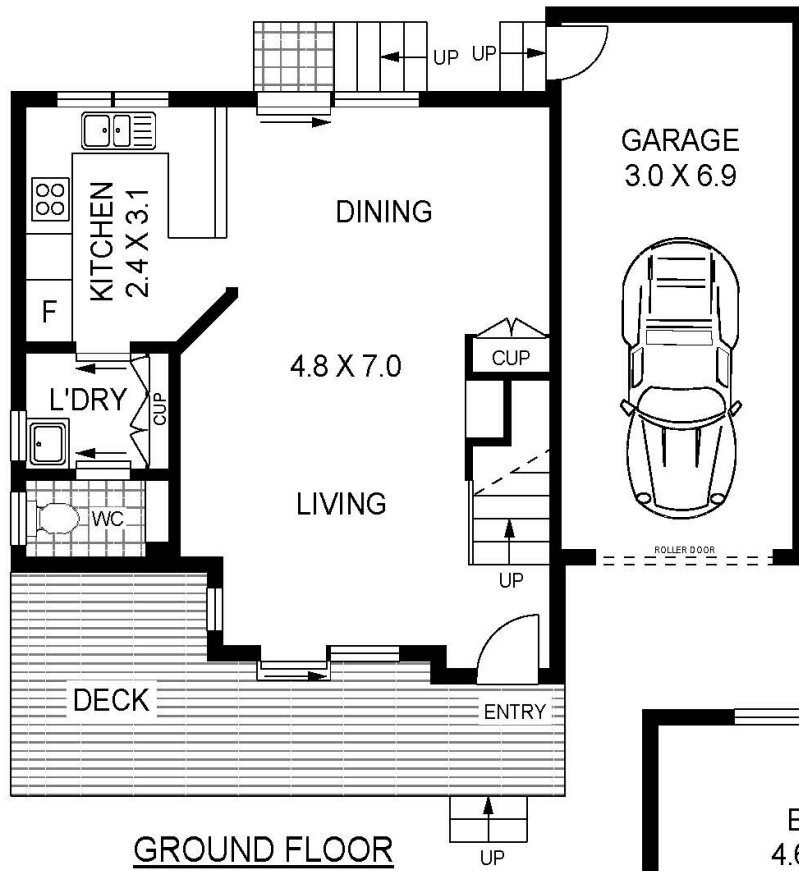
mira.edwards@berry.rh.com.au

Reverse-cycle air conditioning

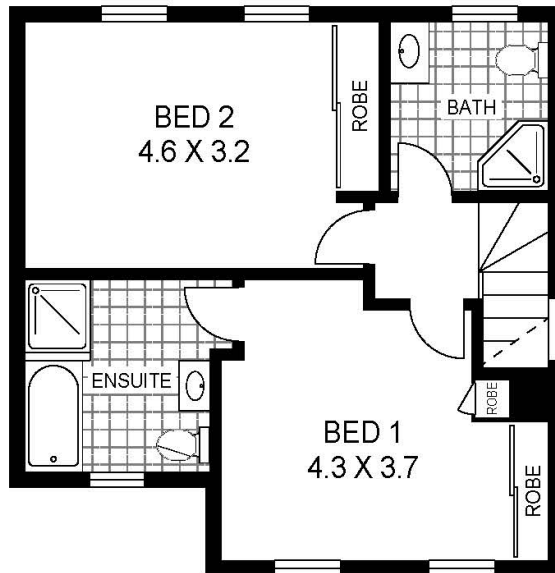
Continuous hot water

Holiday accommodation for up to 6 people

Easy to maintain yard gardens featuring succulents and stunning frangipani



GROUND FLOOR



FIRST FLOOR



1/78 QUEEN STREET

BERRY



PLANS SHOWN ARE ONLY INDICATIVE OF LAYOUT.
DIMENSIONS ARE APPROXIMATE

SCALE BAR in metres

APPROX : GROSS INTERNAL AREA :- 111 SQM

Disclaimer - Jaffa Marketing Services will not accept liability for the accurateness or otherwise of any of the information in this floor plan. The information in this floor plan is provided in good faith but should be considered as approximate only. No representations or warranties of any nature whatsoever are given or intended and any person using this information should rely on their own enquiries.