



**UNDER CONTRACT!**



## 2/120 Wolseley Street, Bexley

Sold for \$650,000 (Mar 08, 2019)

Come home to the peace and privacy of your own space with this single storey villa-style residence, set well back from the street in a boutique complex of five homes with its own front door, North-facing front veranda, private fenced rear courtyard and lock-up garage.

This hidden gem is just 10 mins walk to Kogarah rail, supermarket, shops & services and convenient to St George Public & Private Hospitals, TAFE, schools and business.

- Recently updated with timber floors & fresh paint
- Spacious open living/dining filled with daylong sunshine
- Stylish updated kitchen with stainless steel appliances
- Both bedrooms with built-ins, master ensuite with bath
- Fully-tiled bathrooms, int laundry, shade awnings & blinds
- Private level living with no common walls, adjacent LUG
- Well-maintained complex, tidy gardens, low strata levies
- Ideal starter, dream downsizer, ready-to-rent investment

**Property ID:** 20355216

**Property Type:** Villa

**Garages:** 1

**Open Parking:** 1

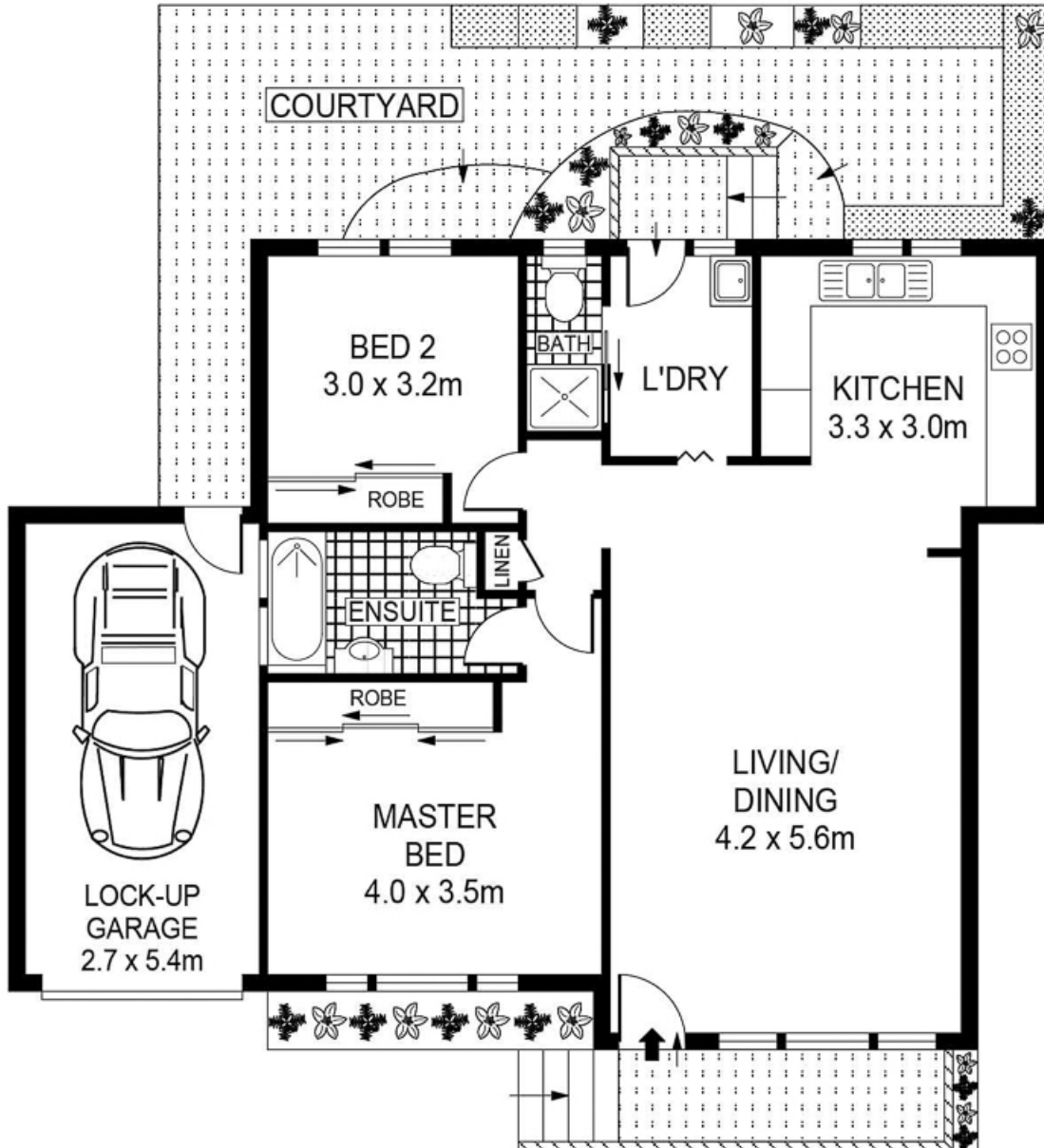
**Sam Epsimos**

0402 373 274

sam.epsimos@bexley.rh.com.au

# Raine & Horne.

Bexley/Beverly Hills



PLANS SHOWN ONLY INDICATIVE OF LAYOUT. DIMENSIONS ARE APPROXIMATE.  
Ref. No: 69606



2/120 WOLSELEY STREET

BEXLEY