

NEW PRICE - Renovated & Superbly Presented Home Unit



2



1



1

1/197 Main Road, Blackwood

Sold

Please contact Andrew Day or Sam Lawley for viewing times.

This beautifully presented & inviting 2-bedroom unit is located in an immaculately presented & well maintained group right in the heart of Blackwood. In close proximity to your local shops, schools and bus routes, boasting an upgraded kitchen and bathroom, this opportunity comes value-packed and ready to move in or let out virtually straight-away.

Suitable for downsizers, investors, first-home buyers and retirees alike. The spacious lounge & dining including split system reverse cycle air conditioning allows for year-round comfort, and easy viewing of the groups' communal garden. The kitchen has been fully upgraded and is open planned featuring electric cooking, and an abundance of storage & bench space.

The hallway incorporates the room dividing linen & display cabinet providing additional storage leading to the spacious bedrooms, both with built in robes. The bathroom has been also been recently updated and configured to include a generous sized shower, toilet, vanity with dual mirrors, good storage & laundry facilities, making great use of the space available.

Recently painted with new carpet throughout for comfort and warmth in addition to under cover car parking and a rear paved courtyard with garden shed, you need look no further than this superb value for money unit within walking distance to schools & transport and only

Property ID: L502203

Property Type: Unit

Building / Floor Area: 7

Carports: 1

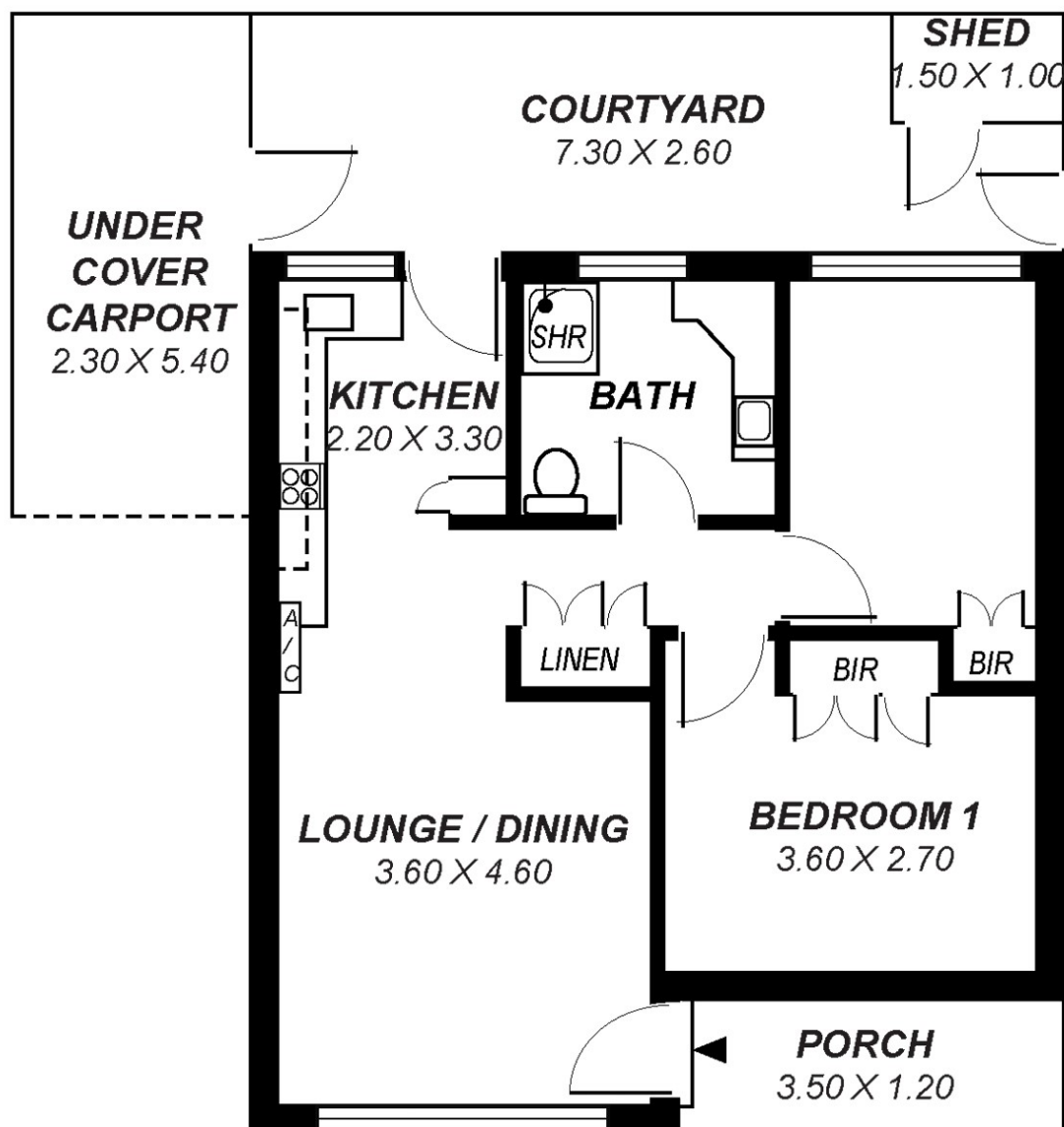
Land Area: 86.0 sqm

minutes to Belair National Park & Blackwood shopping precinct.

We look forward to seeing you at the open.

RLA 44686

1_197Main Road Blackwood



Area	m ²
Living:	52.42
Porch:	4.20
Courtyard:	18.98
Shed:	1.50
Carport:	12.42
Total:	89.52

*This drawing is for illustration purposes only .
All measurements are approximate and details intended
to be relied upon should be independently verified.*