



Stunning Luxuriously Appointed King Sized apartment with panoramic city views...



**503/623-625 Sydney Road, Brunswick**

**Rented**

This exclusive high end boutique development is welcoming yet lavish, relaxed yet urban with sleek graceful and beautifully crafted bespoke finishes designed to impress!

An abundance of natural light filters through the northern windows leading to the vast open plan living/meals area. The enormous East facing terrace with panoramic views is bathed in morning sunlight and offers Panoramic views to Mt Dandenong and surrounds.

Reflective of the Cannatella ancestry and the legacy of European inspired textiles, the stylish lobby of this inviting building features hanging pendant lighting and rustic copper offset, whites and natural wood tones, a distinctive style that is second to none.

Added Attractions Include: Split system air conditioner- Integrated Iluie Fridge, Bosh Stainless Steel appliances including dishwasher, engineered rich oak floors to livings zones, Plush carpets to bedrooms, double glazed windows plus basement car park & store cage!

\*Tenant access is from Breese Street, or alternatively via the alleyway to the LHS of the building on Sydney Road- which will take you to the rear entrance.

**Property ID:** R58810  
**Property Type:** Apartment  
**Garages:** 1

**Jonathon Arfi**  
0481 264 087  
jonathon.arfi@brunswick.rh.com.au

# 623-625 Sydney Road

BRUNSWICK

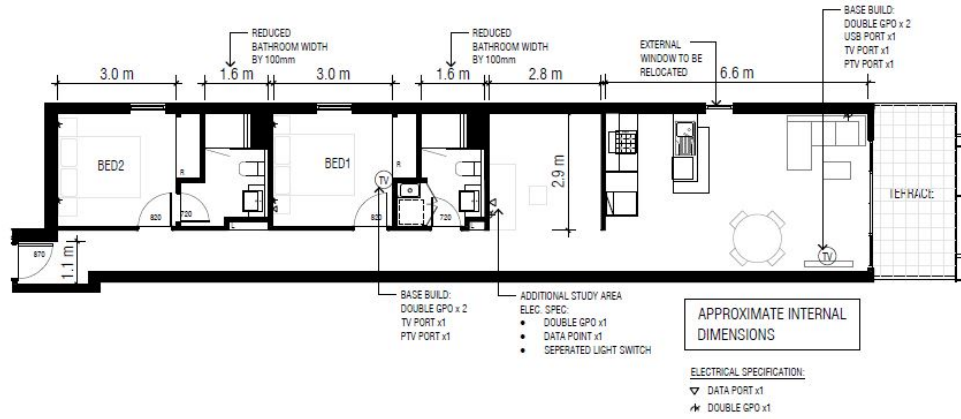
## Apt 503 & 504

TOTAL AREA:	99m <sup>2</sup>
APARTMENT AREA:	90m <sup>2</sup>
BALCONY AREA:	9m <sup>2</sup>
No. OF BEDROOM:	2
No. OF BATHROOM:	2
CAR SPACE:	1

19-02-2018



\*DISCLAIMER: THIS PLAN IS INDICATIVE ONLY. DIMENSIONS AND AREAS ARE APPROXIMATE AND ARE SUBJECT TO CHANGE WITHOUT NOTICE. THE LOCATION OF WALLS, FIXTURES AND FITTINGS ARE PROVIDED FOR GENERAL INFORMATION PURPOSES ONLY AND MAY NOT BE REPRESENTATIVE OF THE FINAL PRODUCT. IT IS AN ARTIST'S IMPRESSIONS AND IS SUBJECT TO CHANGE AS REQUIRED BY THE VENDOR. INTERNAL MEASUREMENTS ARE TAKEN FROM THE CENTRE LINE OF PARTY WALLS AND THE EXTERNAL FACE OF CORRIDORS & THE OUTSIDE WALL UNLESS CLEARLY NOTED OTHERWISE. LOOSE FURNITURE, WHITE GOODS AND PLANTERS ARE NOT INCLUDED UNLESS STATED OTHERWISE.



# CRC Group