



**Kooralbyn Living !! Price Adjusted - Be Quick**



3



2



3

## 46-50 Farwell Close, Kooralbyn

**Sold for \$663,000 (Feb 29, 2024)**

Escape to your own haven in Kooralbyn, where the allure of panoramic views and the soothing embrace of nature await. This unique residence offers more than just a home—it's an opportunity to break free from the chaos of the city and unwind in a tranquil retreat.

Step into a lifestyle of relaxation as you explore the expansive living spaces, including a rear deck designed for easy afternoon repose. The well-landscaped rear yard beckons you to make it your own, providing an authentic Australian backdrop that's truly iconic. The main living area, with its vaulted ceiling, becomes a focal point for both entertaining and moments of pure relaxation.

Discover your own slice of paradise in Kooralbyn, where every corner is a testament to the captivating beauty of the surroundings. Whether you're an avid golfer or simply yearn for the tranquility of this picturesque locale, this property offers an exclusive rural retreat that transcends the ordinary.

### Key Features:

- Master ensuite with walk-in robe
- Three spacious bedrooms

<b>Property ID:</b>	L25180313
<b>Property Type:</b>	House
<b>Garages:</b>	3
<b>Land Area:</b>	6298.0 sqm

### Jason Read

0404493690

Jason.Read@coomera.rh.com.au

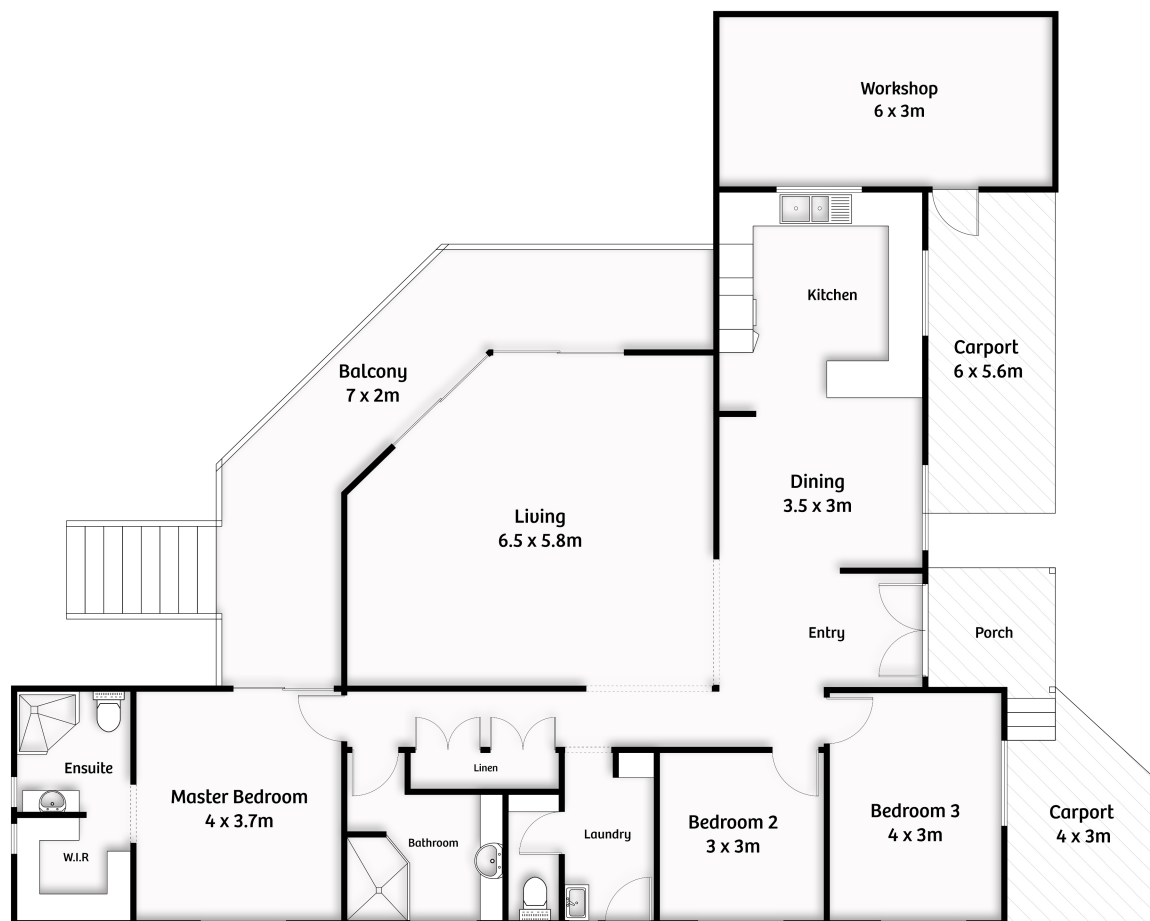
- Ceiling fans throughout
- Wrap-around deck with panoramic views
- Spacious sunken lounge room
- Blackbutt timber flooring
- Skylight in the lounge room
- Split-system air conditioning in the main bedroom and lounge room
- Country-style kitchen
- Cathedral ceilings with skylights
- Ample storage space
- Expansive 6298 square meter block
- Permanent 20-foot storage container
- Built in 2004

Just a 4-minute drive to local shops, doctors, chemist, service station, tavern, takeaway, resort, golf course, and more.

Escape the ordinary and embrace the tranquility of Kooralbyn living – your rural retreat awaits.

Disclaimer:

In preparing this information, we have used our best endeavours to ensure that the information contained herein is true and accurate, but accept no responsibility and disclaim all liability in respect of any errors, omissions, inaccuracies or misstatements that may occur. Prospective buyers should make their own enquiries to verify the information contained herein.



Total floor area approx : 170m<sup>2</sup>

**Raine & Horne®**

**46-50 Farwell Close Kooralbyn**

Whilst every attempt has been made to ensure the accuracy of the floor plan contained here, measurements of doors, windows, rooms and any other items are approximate and no responsibility is taken for error, omission or mis-statement. This plan is for illustrative purposes only and should only be used as such by any prospective purchaser.

