



Coomera Opportunity



4



2



2

6 Tribulation Crescent, Coomera

Offers over \$879,000

Entry into Genesis Estate is waiting for you with this amazing opportunity at 6 Tribulation Crescent, Coomera. Looking for a home that allows easy living with young kids? Open plan living allows ease to entertain and enjoy the ease of connection between family and fun. Nestled in one of the best streets in the award winning Genesis estate sits this modern contemporary residence that is sitting on a 604sqm sized block. In a quiet street that is beautifully kept you'll have no problem pulling into the drive way and calling 6 Tribulation home.

Features include but limited too:

- 4 bedrooms
- Air conditioning
- Huge Alfresco area
- Dishwasher
- Open Plan

Property ID: L26357056

Property Type: House

Garages: 2

Land Area: 601.0 sqm

Jason Read

0404493690

Jason.Read@coomera.rh.com.au

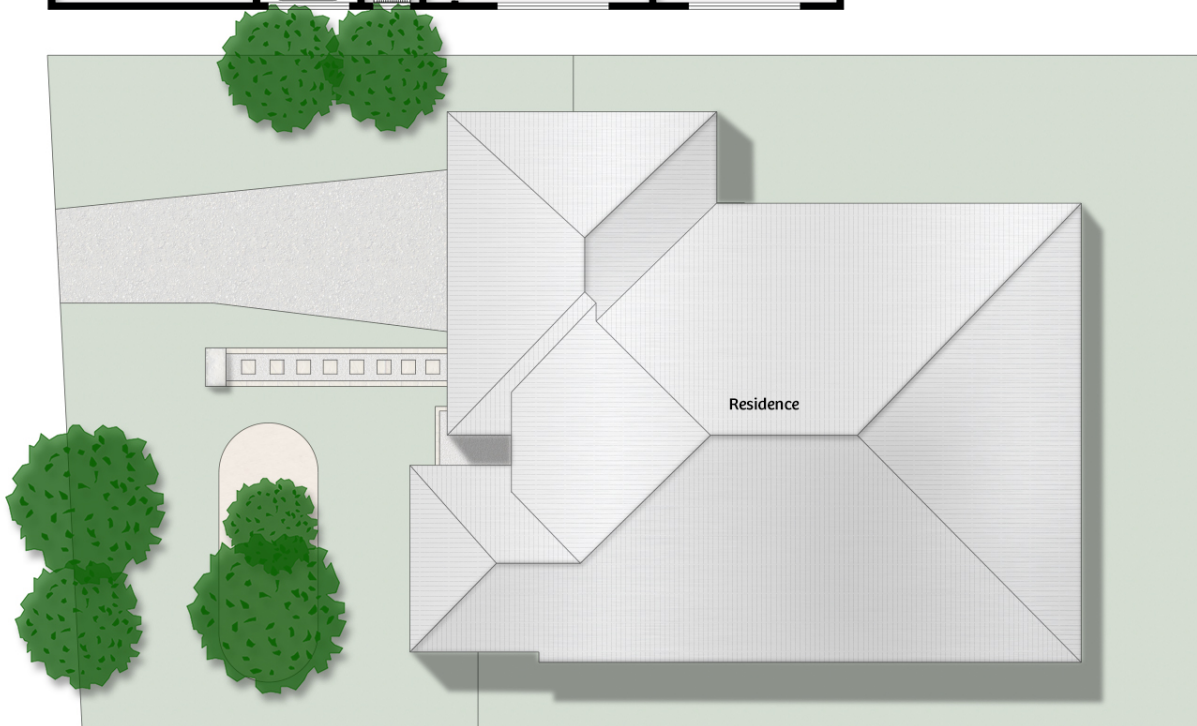
- Ceiling Fans
- Security Screens
- 604 m2
- Access to the exclusive 'Genesis Clubhouse'
- Built in 2011
- Low Body Corporate Fees

All this plus access to the Genesis Residents club which offers a lifestyle that is unmatched value in this price range. 'Genesis' Estate blends eco-sensitive design and smart thinking to create a relaxed living environment focused on the pillars of Community, sustainability innovation, location and healthy living. The pool, with its dedicated 25m lap lanes and recreation swimming area caters for all. But if you would rather unwind, relaxing on the club terrace or on the resort furniture by the pool is the place to be. To make life even more convenient, the Business Centre provides you with facilities to use as an extension of your home – for work or study – saving you precious time for the fun things in life, like making use of the cinema in the club room. The beautiful backdrop of lakes and parklands will also ensure Synergy plays host to many community gatherings and social functions.

Just a stone's throw away, you'll find Picnic Creek State School, renowned for its commitment to providing a nurturing and comprehensive learning environment. Your children can enjoy a short, stress-free journey to their classes, ensuring a convenient and efficient start to their school days. For those seeking higher education opportunities, Foxwell State College is within easy reach, offering exceptional academic programs and a range of extracurricular activities.

Additionally, within 15min drive, there are a multitude of private schooling options including St Joseph's College, Assisi College, Saint Stephens, Kings Christian College, and Coomera Anglican College. Whether your children are just beginning their educational journey or preparing for future endeavors, these esteemed colleges provides a solid foundation for their growth and development. Whether you're seeking a forever-family home, your first step into the property market, or an excellent investment opportunity, 6 Tribulation is the ideal choice. Discover a haven of comfort, convenience, and endless possibilities in a community that celebrates quality living.

Disclaimer: In preparing this information, we have used our best endeavors to ensure that the information contained herein is true and accurate, but accept no responsibility and disclaim all liability in respect of any errors, omissions, inaccuracies, or misstatements that may occur. Prospective buyers should make their own enquiries to verify the information contained herein.



Total floor area approx : 210m²

Raine & Horne

6 Tribulation Crescent, Coomera

Whilst every attempt has been made to ensure the accuracy of the floor plan contained here, measurements of doors, windows, rooms and any other items are approximate and no responsibility is taken for error, omission or mis-statement. This plan is for illustrative purposes only and should only be used as such by any prospective purchaser.

