



Easy Living at Its Finest



3



2



1

## 29 Wimmera Crescent, Upper Coomera

Sold for \$760,000 (Mar 13, 2024)

This impeccably designed home is an ideal haven for a small family, retirees or those looking to downsize with the convenience of easy single level living experience.

Boasting three spacious bedrooms, including a large master bedroom with an ensuite and an additional well-appointed bathroom. This residence offers ample space for relaxation and privacy. The large kitchen with a pull out and corner pantry is perfect for family meals.

The easy living layout ensures a seamless flow throughout the home. Built in 2013, this custom built award-winning property requires minimal maintenance with no body corporate fees, making it a practical choice for a small family, retirees or first home owners.

Its strategic location in Highland Reserve provides easy access to schools and public transport; catering to the needs of a growing family or those enjoying their retirement years.

Additional features such as FTTTP Internet, air conditioning, ceiling fans, a single lock-up garage with driveway parking and a covered Merbau entertaining area with breathtaking views enhance the overall appeal.

Property ID: L805531

Property Type: House

Garages: 1

**Jason Read**

0404493690

Jason.Read@coomera.rh.com.au

The commercial-grade vinyl flooring in the bedrooms, storage under the deck for surfboards and a 6-star energy rating contribute to the home's charm and functionality.

With high ceilings adding an extra touch of elegance, this property is a welcoming and accessible haven for those seeking a comfortable and convenient lifestyle.

- 3 Large Bedrooms
- Large Master Bedroom with Ensuite
- 2 Bathrooms
- Large Kitchen with Pull Out and Corner Pantry
- Easy Living all on one level
- No Body Corporate
- Located in Highland Reserve
- Easy Access to Schools and Public Transport
- FTTTP Internet
- Air Conditioning
- Ceiling Fans
- Single Lock Up Garage with Parking on Driveway
- Covered Merbau Entertaining area with amazing views
- Commercial Grade Vinyl flooring to bedrooms
- Storage Under Deck area perfect for surf boards etc.
- 6 star energy Rating
- High ceilings
- Land Size 280mtrs

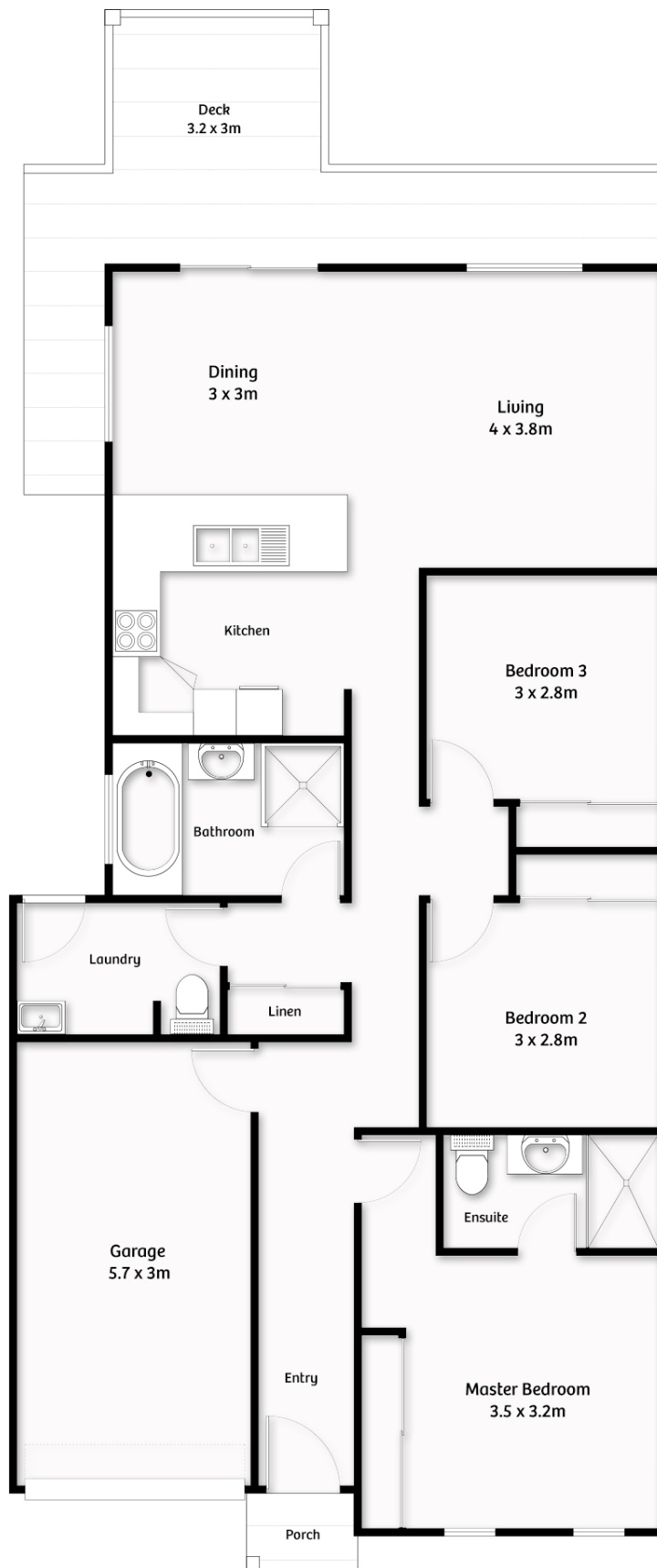
Why Owners call Highland Reserve, Upper Coomera home:

- Parkrun around Highland Reserve Lake
- Coffee shop, convenient store, Health By Instinct & Young Discoverers Daycare
- Off leash Dog parks
- Highland Reserve State School Prep-Year 6

- 10 Minutes to Coomera Westfield & Costco
- 10 Minutes to Bunnings Oxenford

Please call today to book your inspection.

Disclaimer: All the information provided to you in our marketing material, has been sourced from third parties, and effort has been made to ensure the accuracy and thoroughness, please note we cannot guarantee the accuracy of the information provided by our Vendors, and as such, Raine and Horne Coomera makes no statement, representation or warranty, and assumes no legal liability in relation to the accuracy of the information provided. Interested parties should conduct their own due diligence in relation to each property they are considering purchasing. All photographs, maps, and images are representative only, for marketing purposes.



Total floor area approx : 136m<sup>2</sup>

**Raine&Horne.**

29 Wimmera Crescent, Upper Coomera

Whilst every attempt has been made to ensure the accuracy of the floor plan contained here, measurements of doors, windows, rooms and any other items are approximate and no responsibility is taken for error, omission or mis-statement. This plan is for illustrative purposes only and should only be used as such by any prospective purchaser.

