



Looking for your First?



3



2



2

14 Winchester Crescent, Pimpama

Sold for \$761,000 (Feb 26, 2024)

Looking for your first home? Look no further, this is a must-see – instructions are clear: Sell, Sell, Sell! Upon your inspection, you're greeted with comfortable living and entertaining, boasting three bedrooms plus a study, a modern kitchen with stone benchtops and electric cooking, and a spacious alfresco area perfect for relaxation. With features like ducted air conditioning, a solar system, and a double garage with ceiling storage, convenience and comfort are guaranteed. Located in a rapidly growing area with easy access to schools, shopping precincts, and upcoming community facilities, this home promises a bright future for you and your family.

- 3 Bedrooms plus Study
- Modern Kitchen with Stone Benchtop and Electric Cooking
- Master bedroom with Walk-in Robe and Ensuite
- Entertaining/Alfresco area with TV Bracket area
- Solar System
- Swan Security Camera System

Property ID: L810741
Property Type: House
Garages: 2
Land Area: 400.0 sqm

Jason Read
 0404493690
 Jason.Read@coomera.rh.com.au

- Ducted Air conditioning
- Formal Lounge with Huge TV Bracket
- Dishwasher
- Double Garage with Ceiling Storage
- Side Yard Perfect for Kids and Pets
- Water tank
- Private Rear yard
- Easy access to Clothesline, etc., from Garage

Talking about convenience, the Pimpama City and Westfield Coomera shopping precincts are only a short drive away and have, without question, changed the dynamic for locals, catering to the continual population growth that Pimpama and its surrounding suburbs enjoy. A selection of Primary and Secondary schools within the Pimpama/Coomera areas ensures that you are very much spoiled for choice when it comes to education. Also, in case the current options were not enough, opening in 2021 will be the new Pimpama State Primary School, further accommodating for families who call Pimpama home, now and into the future.

Pimpama has welcomed community inclusions such as the Home Focus Homemaker Centre Pimpama, Pimpama Sports Hub and also a designated Train Station. If you are seeking perfect positioning between the Gold Coast & Brisbane to enjoy the best of both worlds, please call or email today for further information or to organize your private inspection!

ADDITIONAL FUN FACTS: -

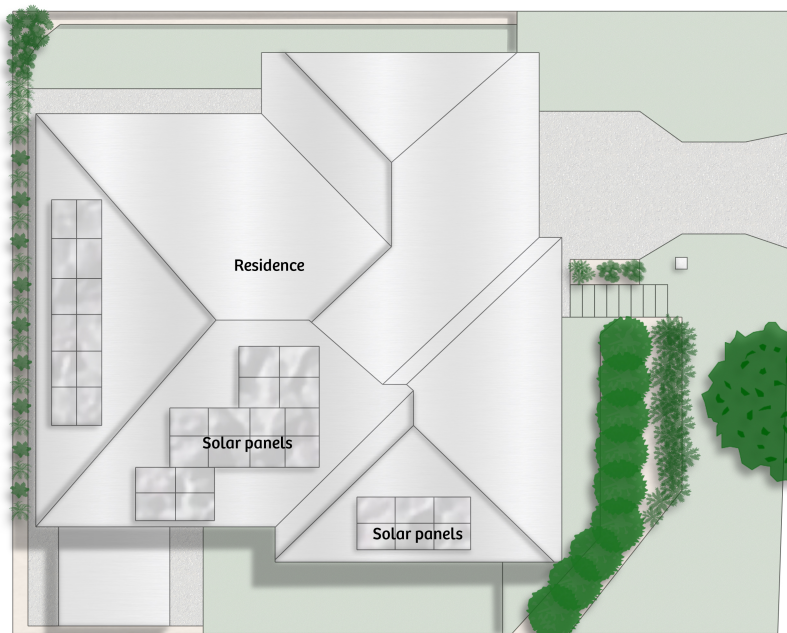
Electricity charges: approx. \$102 per month

Council rates: approx. \$962 half-yearly

Water rates: approx. \$400 per quarter (including usage)

Rental appraisal: \$640-\$650 per week

Catchment schools: Pimpama State School & Pimpama State Secondary College



Total floor area approx : 272m²