



**NORTH BONDI**  
1/403-405 Old South Head Road

3  2  2 

## Superbly Spacious And Sun-Filled Home, Envious Nth Bondi Address

A sunlit and elegant home showcasing luxury interiors complemented by a spacious floor-plan maximising natural light and highlighted by a sun-soaked apartment-wide terrace, this magnificent residence offers North Bondi living at its absolute best. Set in the much admired "Maison Blanc", a recently constructed complex on the corner of Roe St, this abode blends two original apartments into one, the result being a sleek E/NE-facing home of wonderful size and privacy, complete with secure parking for 2 cars.

Positioned on the ground floor with level internal access plus private 2nd entry from quiet Roe St, this stunning home features an open plan living/dining area opening directly to the wood-decked garden terrace, a delightful area for entertaining, with district views. The adjacent kitchen is a remarkable space with gas cooking and full range of Smeg appliances, while the private master bedroom is a tranquil zone with extensive b/ins and huge en-suite. The 2nd bedroom has interconnected en-suite and b/ins, while the 3rd offers flexible use as a study or relaxed living space.

Enjoying all the benefits of this sought-after coastal neighbourhood – with parks, the harbour, Bondi Beach, famed cafes, golf course and places of worship within very easy reach – this home offers a serene base from which to enjoy the best of the area. The expansive terrace is perfect for al fresco dining whilst this home's ease of access, with level lift to side-by-side underground parking, make it a low-maintenance residence of massive appeal. With ducted A/C, alarm, on-title storage and internal laundry, this property has the lot and is sure to impress to most astute buyers.


### Features

- Sun-bathed E/NE-facing home in highly desirable Nth Bondi enclave

<b>Property ID:</b>	L968545
<b>Property Type:</b>	Apartment
<b>Garages:</b>	2

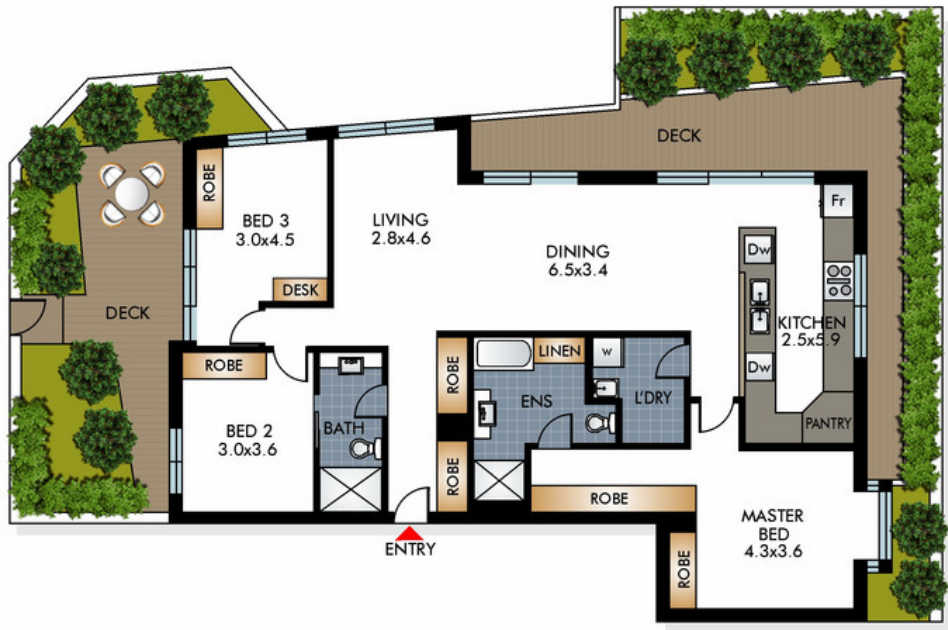
### AGENT

**Ric Serrao**

 0412 072 178

 ric@rhdb.com.au

- Set in "Maison Blanc" block w private level entry, sun-soaked outlook
- Luxurious living, 2 original units merged to create lavish modern home
- Relaxed living/dining area opening out to superb terrace, full of sun
- Tranquil main bedroom w expansive b/ins and huge private en-suite
- Peaceful 2nd bed w en-suite, 3rd bed w flexible use as study/office
- Showpiece kitchen, Smeg appliances, 2x d/washer, stone benches
- Entertainers' terrace feat gas BBQ connection, garden, district aspect
- Level lift access to privu parking, laundry, A/C, alarm, on-title storage
- Exceptional lifestyle opportunity just mins to beaches, harbour, cafes



This diagram is for illustrative purpose only. All reasonable care has been taken in the preparation, but no warranty is given to the accuracy of the information. This document does not constitute any part of any offer or contract. Dimensions shown are approximate only. Prospective purchasers must rely on their own enquiries.