

POINT PIPER
1 Wingadal Place

5  6  4 

Luxury Waterfront Residence With Spectacular Harbour Views

Commanding world class Sydney Harbour views from Seven Shilling Beach and Double Bay to the Opera House and Harbour Bridge, this stunning waterfront residence presents design excellence of space and style in one of Australia's most exclusive addresses. A private sanctuary of contemporary elegance designed for indoor-outdoor living and entertaining, the magnificent 5-bedroom 6-bathroom home is one of only three absolute waterfront properties in prestigious Wingadal Place on the exclusive Point Piper peninsula.

The ultimate in harbourside luxury, this stunning residence on 961sqm land features multiple living areas, alfresco terraces, 2 kitchens and poolside studio/cabana and entertaining area. Created by leading Australian architects, James Stockwell and Jonathan Temple, and further developed and project managed by award-winning architects Collins + Turner, the home showcases eco design principles and the finest bespoke finishes including a dramatic hand wrought vaulted copper ceiling on the top level.

Celebrating the finest quality in Australian materials and craftsmanship, the residence features a natural palate of copper, Wondabyne sandstone and Karri wood complemented by European marble finishes and windows from Italy. Designed to maximise natural light with each level flowing seamlessly to the outdoors and landscaped gardens designed by Craig Burton, the energy efficient home features an internal lift, custom joinery, automated blinds and sash windows, gas fireplace, surround sound, security system and secure parking for four cars.


Features


- Intimate entry courtyards leading to top level entrance

Property ID	L967981
Property Type	House
Garages	4

AGENT

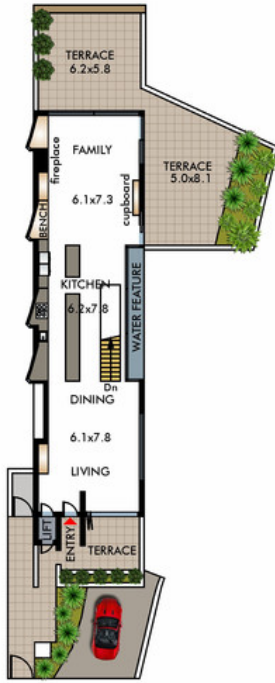
Alex Lyons

 0488 201 377

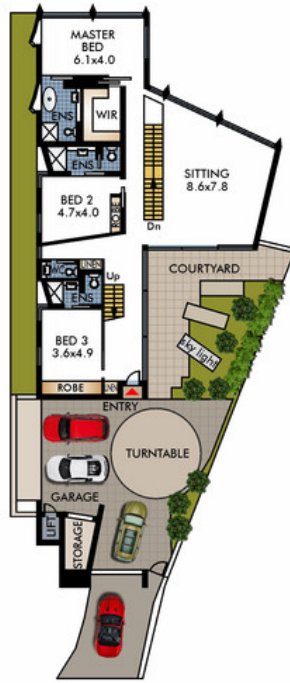
 alex@rhdb.com.au

- Waterfront 3-level residence
- Spectacular harbour views
- Direct access to the harbour
- Alfresco living and dining terraces
- Living/dining area w copper ceiling
- Family living area w gas log fireplace
- Sitting room opening to garden courtyard
- Library/cinema room w custom joinery
- 2 main bedrooms w large WIR & ensuite
- 2 more bedrooms w built-ins & ensuite
- 5th bedroom (or rumpus) w ensuite
- 6 marble bathrooms w heated floors
- Main kitchen w two marble islands
- Siemens cooktop, Gaggenau oven
- Integrated marble faced cabinetry
- Integrated F & P dish drawers
- 2nd gas kitchen at poolside level
- Laundry w generous built-in storage
- Extensive built-in storage on all levels
- Custom designed LED lighting
- Surround sound, automated blinds
- Poolside study/studio with bayside views
- Infinity pool lined w European marble
- Poolside spa and poolside terraces
- Poolside shower room; landscaped gardens
- Large water sports storeroom/outdoor shower at stairs down to water

- State-of-the-art security alarm system
- Secure 4-car parking area with turntable
- Proposed wine cellar/games room/gym
- Eco features include photovoltaic panels, grey water recycling system and solar hydronic heating in bathrooms



FIRST FLOOR



GROUND FLOOR



LOWER GROUND FLOOR

This diagram is for illustrative purpose only. All reasonable care has been taken in the preparation, but no warranty is given to the accuracy of the information. This document does not constitute any part of any offer or contract. Dimensions shown are approximate only. Prospective purchasers must rely on their own enquiries.