

Designer Terrace Styled Apartment In A Prized Address



2



2



1

10/24 Gordon Street, Paddington

Sold

Newly completed in a timeless contemporary style, this chic terrace styled apartment embodies a spacious streamlined design over two levels with a great layout, featuring only the finest of finishes and a completely north easterly aspect from every room. The designer open plan living and dining space extends out onto a lush entertaining private courtyard.

Highly sought-after, 'The Gordon' is a new Paddington development, enviably placed within strolling distance to Oxford Street shops, cafes, a wonderful Restaurant hub, local weekend markets, Centennial Park, Queen Street Village, the Entertainment Quarter and frequent city buses all at your doorstep.

- Stylish open plan living/dining areas
- North easterly entertaining courtyard
- King sized bedrooms with built-in robes
- Immaculate rainshower equipped bathrooms
- Concealed laundry, ducted a/c, sunlit throughout

Property ID: 20947829

Property Type: Apartment

Garages: 1

Denise Cameron

0410 444 125

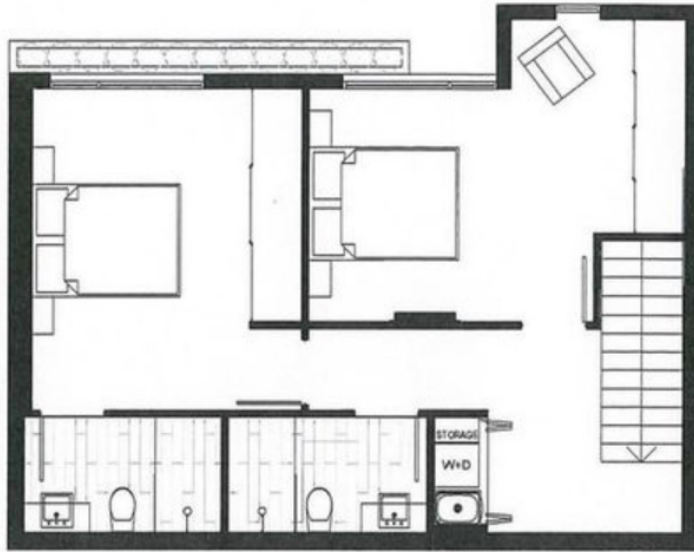
thecamersons@rhdb.com.au

- Security building, lift access, Video intercom

- Security Parking plus storage – Second car space can be made available on long lease.



GORDON STREET | PADDINGTON



LEVEL 2



SECURE CAR SPACE



LEVEL 1