



**BELLEVUE HILL**  
28 Bunyula Road

4  4  2 

## Family Haven With Panoramic North-Easterly Views


Boasting a prized North Easterly aspect with panoramic views stretching from Manly to Bondi, this grand double brick family home set on 645sqm (approx), offers generously proportioned beautifully appointed details. This double-fronted home is set on the high side of the street with panoramic valley views over Royal Sydney Golf Course to the harbour enhancing the sense of serenity and creating a magical backdrop by night. Perfect for entertaining, free-flowing living areas embrace the outdoors while its exclusive location between the coastal playgrounds of Rose Bay harbour and Bondi Beach is close to prestige schools, shops and transport.

- Deep manicured gardens and sweeping elevated views to Manly
- A commanding setting, flexible two storey layout, double garage
- Expansive sunny, level and private garden with room for a pool
- 4 double bedrooms with built-in robes and a library/sitting room
- Formal and casual living rooms, chef's grade granite gas kitchen
- Spacious dining, wide sunroom/side return, garden courtyard
- Huge upper level rumpus room/ master bedroom with window seat
- 4 bathrooms, family sized laundry, ducted air, extensive storage

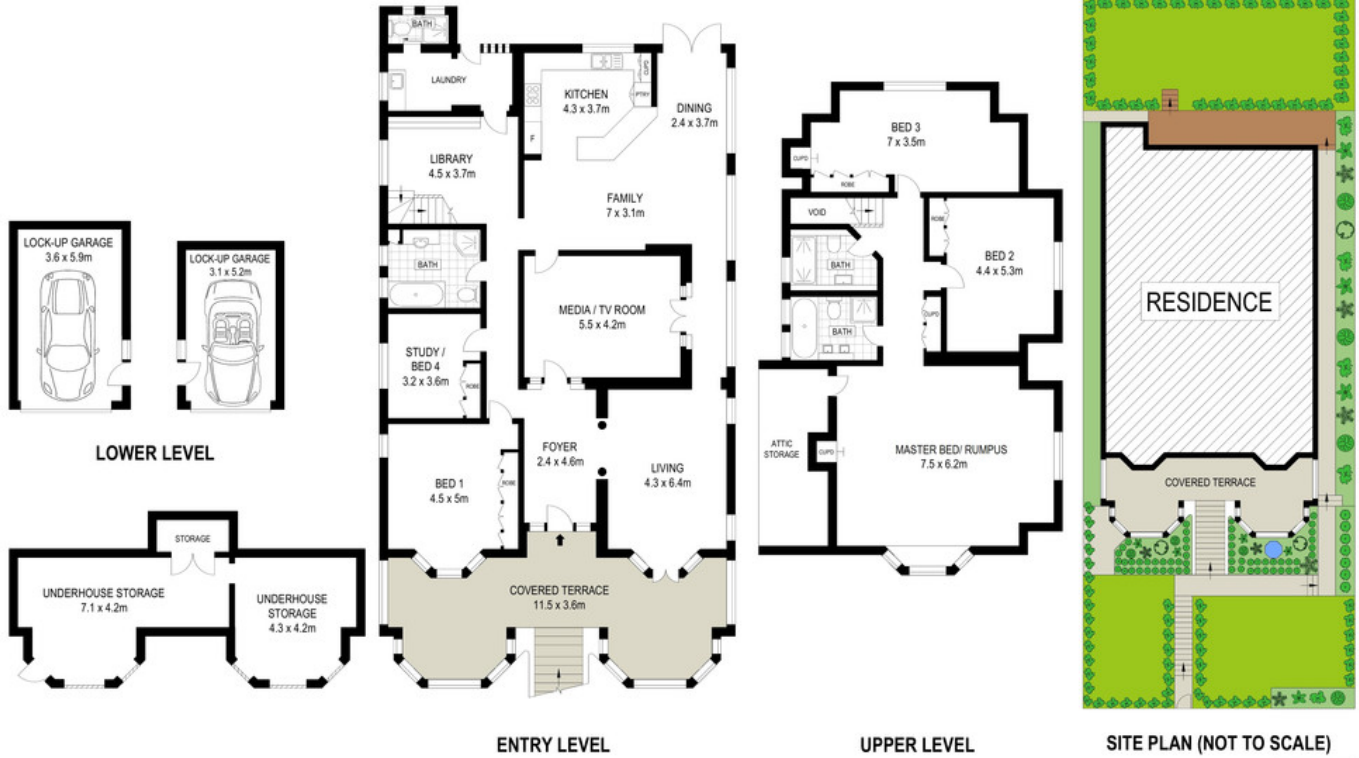
<b>Property ID:</b>	19136061
<b>Property Type:</b>	House
<b>Garages:</b>	2

### AGENT

**Martin Maskin**

 0419 22 44 55

 martin@rhdb.com.au



Scale in metres. Indicative only. Dimensions are approximate. All information contained herein is gathered from sources we believe to be reliable. However we cannot guarantee its accuracy and interested persons should rely on their own enquiries.

28 Bunyula Road, Bellevue Hill

