



**SURRY HILLS**  
46 Smith Street

2  1 

## Urban Oasis In A Quiet Inner-City Pocket


Echoing the eclectic charm and artistic vibe of its urban village setting, this character-filled terrace is tucked away in a quiet street one block back from Crown Street's celebrated dining hub. Opening to a lush tropical courtyard garden, the two-storey terrace is comfortable as is with scope to exercise your creative flair and transform the interiors capitalising on its classic charm and potential for an attic conversion (STCA). Surrounded by cafes, pocket parks and restaurants, it's just over 2km to the CBD and 550m to Central Station making it ideal for the professional couple or investor.


- A great market entry with scope to renovate and add value
- Classic sandstock brick terrace in the heart of the inner city
- 2 upper level bedrooms, main with French doors to a balcony
- Dine-in gas kitchen, polished timber floors, tidy bathroom
- Light-filled living opens out to a deep east facing courtyard
- A peaceful and private outlook framed by soaring palm trees
- Exposed brick walls, potential for an attic level addition STCA

Property ID	21404163
Property Type	Terrace

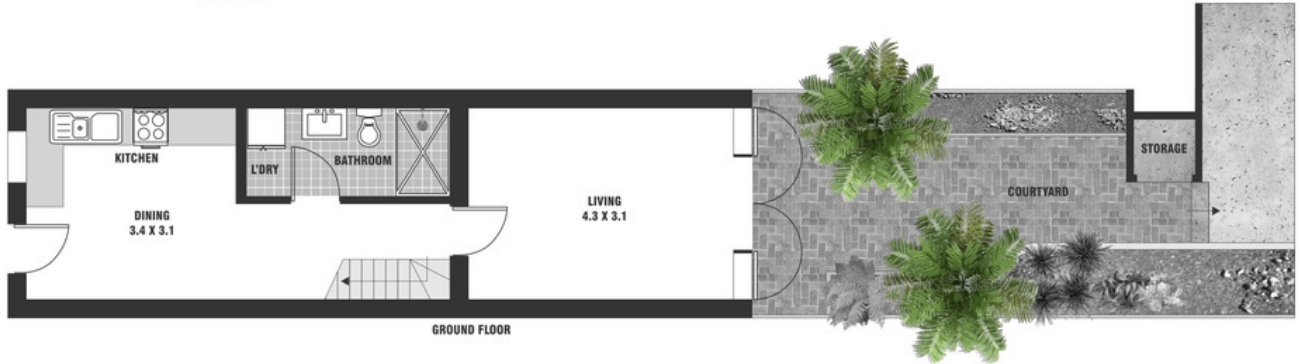
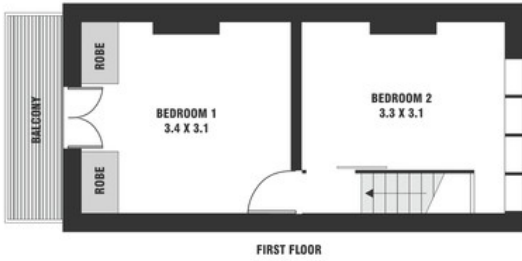
### AGENT

**Paul Langsam**

 0412 375 551

 paul@rhdb.com.au

# 46 Smith Street SURRY HILLS



This diagram is for illustrative purpose only. All reasonable care has been taken in the preparation, but no warranty is given to the accuracy of the information. This document does not constitute any part of any offer or contract. Dimensions shown are approximate only. Prospective purchasers must rely on their own enquiries.