




**Quality Townhouse with Stunning Mountain Views!**

Raine&Horne

 2
  1
  3

## 1/19 Paige Court, Warrane

Sold for \$516,001 (Nov 06, 2020)

Are you looking for an immaculately presented modern townhouse on a level block with Mountain views in a convenient location? Well we have a property that ticks all of those boxes and so many more.

Freshly painted throughout and featuring stunning Tasmanian Oak floors this property has been lovingly upgraded to include new carpets, quality plantation shutters, new stainless steel quality appliances and even a new hot water cylinder. Move in ready and situated in a quiet cul-de-sac. So close to Rosny Park and Hobart CBD this property offers so many features and quality upgrades.

This low maintenance rendered block home was built in 2005 and offers a large open plan living area that flows beautifully to the dining space and functional kitchen beyond. Large windows in the kitchen frame those stunning mountain views and make it a warm and welcoming space. With a multitude of cupboard and bench space, coupled with quality appliances and a well equipped pantry, this kitchen is certainly an entertainers delight, there is even a secluded deck area off the dining area that would make alfresco entertaining so easy.

The two bedrooms are both of a generous size and feature great built in robes and the bathroom, that is also accessible from the master bedroom, is large, modern and well designed. There is also a separate toilet for convenience. The laundry is spacious and leads to a

<b>Property ID:</b>	L3711866
<b>Property Type:</b>	House
<b>Building / Floor Area:</b>	121
<b>Garages:</b>	1
<b>Open Parking:</b>	2
<b>Land Area:</b>	262.0 sqm

**Matt Carne**  
 0419571066  
 matt.carne@es.rh.com.au

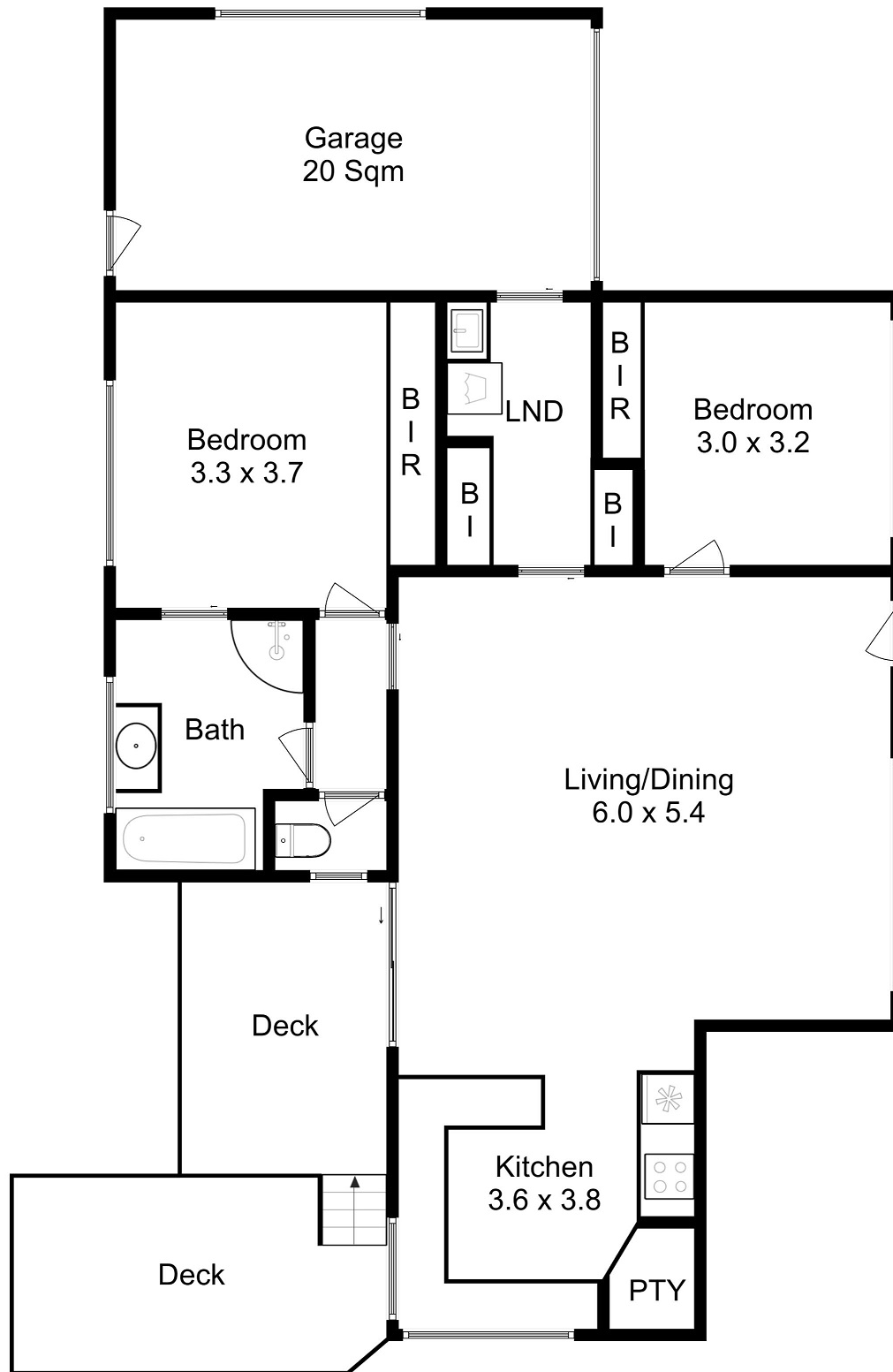
well sized garage with internal access perfect for additional storage or an additional parking spot. This property has additional exterior parking and even has enough backyard to keep the avid gardener entertained. The additional parking can even fit a small caravan or boat!

Situated in an elevated and sunny position surrounded by quality homes, this property will suit a multitude of buyers. The floorplan is also well designed and versatile, it could easily suits many different requirements ie additional bedrooms etc (stca). Close to all services, shops and amenities this property is not only visually stunning but also super convenient. Do not wait to view this property as it will not last long.

The Vendor reserves the right to accept an offer at any time during the marketing period.

To arrange your inspection, please contact our office using the Contact Agent link on this page and we invite you to download our free App (apple and android) from the App Store. Simply search for Raine & Horne Eastern Shore. We can notify you of new listings, inspection times and price changes as soon as they happen.

All measurements are approximate and details intended to be relied upon should be independently verified. The particulars contained in this advertisement do not form any contract. While care has been taken in its presentation, no representation is made and no responsibility is accepted for the accuracy of the whole or any part and interested persons are advised to make their own enquiries and satisfy themselves in all respects.



**Total Approximate Living Area : 121sqm**

Please Note : This floor plan is for marketing purposes and is to be used as a guide.  
Produced by Promote Property Marketing

