



TRIABUNNA

1 Howells Place

3  2  4 

Something for the Whole Family!

Overlooking the township of Triabunna sits this double story, brick construction, family home, situated perfectly to maximise the beautiful views this part of the world has to offer.

On the upper level, 1 Howells Place, is comprised of 3 bedrooms with built in robes, large living area with adjacent study area, bathroom and open plan kitchen and dining area which accesses the large entertaining deck with water views, perfect for entertaining or winding down after a long day.

The kitchen is equipped with a large pantry, granite bench tops, double sink and dishwasher, whilst the bathroom comes complete with bathtub, separate enclosed shower, vanity and separate toilet.

Heading downstairs to the ground level of the property, is a small entrance way which accesses the 8.3m x 7.4m internal garage with double rollers doors, a second bathroom and large rumpus room, perfect for guests or growing families.

In addition to this there is also a second 8.8m x 6.1m double garage, sitting at the rear of the property with sliding doors for tools, toys or extra storage.

With a large backyard and within striking distance to everything the township of Triabunna has to offer, 1 Howells Place is a property that ticks all the boxes!


Contact us today to arrange an inspection.

To arrange your inspection, please contact our office using the Contact Agent link on this page and we invite you to download our free App (apple and android) from the App Store. Simply search for Raine & Horne Eastern Shore. We can notify you of new listings, inspection times

Property ID	L560098
Property Type	House
Building / Floor Area	123
Garages	4
Land Area	1200.0 sqm

AGENT

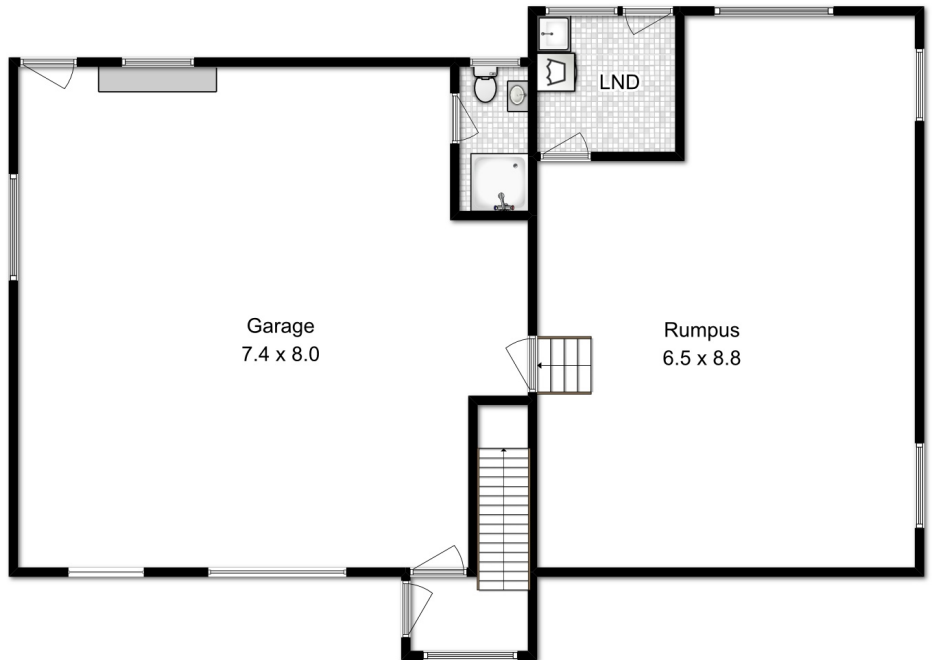
Belinda Miller

 0488048638

 belinda.miller@es.rh.com.au

and price changes as soon as they happen.

All measurements are approximate and details intended to be relied upon should be independently verified. The particulars contained in this advertisement do not form any contract. While care has been taken in its presentation, no representation is made and no responsibility is accepted for the accuracy of the whole or any part and interested persons are advised to make their own enquiries and satisfy themselves in all respects.



Total Approximate Area : 174 sqm



Please Note : This floor plan is for marketing purposes and is to be used as a guide.