



6 Bedroom Family Home Stunning City, Bridge & Water Views



5



4



2

335 Lyons Road, Five Dock

Auction guide \$2.5mil

Nestled in a sought-after bayside locale, this home boasts panoramic city, Harbour Bridge and bay vistas across two levels. Its flexible layout caters to various living arrangements, making it perfect for large families with potential in-law accommodation. Experience effortless living within walking distance to schools, shops, and dining options, with the added convenience of buses at your doorstep.

- Upper-level deck offering sweeping views of the city, Harbour Bridge and water vista
- 5 Spacious bedrooms, built-in wardrobes, plus a study/6th bedroom
- Lower-level master bedroom with renovated en-suite
- Separate dining area and ample living space
- Well-appointed gas kitchen with granite countertops and stainless-steel appliances
- Timber deck for entertaining and a refreshing saltwater pool
- 4 Bathrooms, including newly tiled ensuite and stylish updated main bathroom

Property ID: L26891793

Property Type: House

Garages: 2

Land Area: 562.0 sqm

Sam Varrica

0430506002

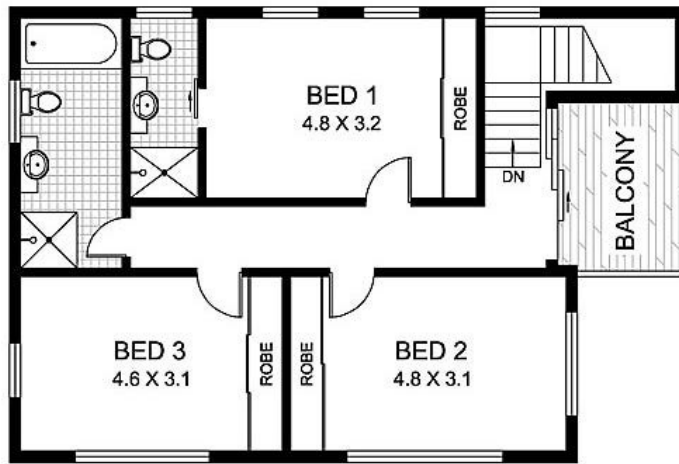
sam.varrica@fivedock.rh.com.au

- Features include air conditioning, gas bayonets, and high ceilings
- Low-maintenance block with garage/studio and additional parking
- Land approx. 562sqm

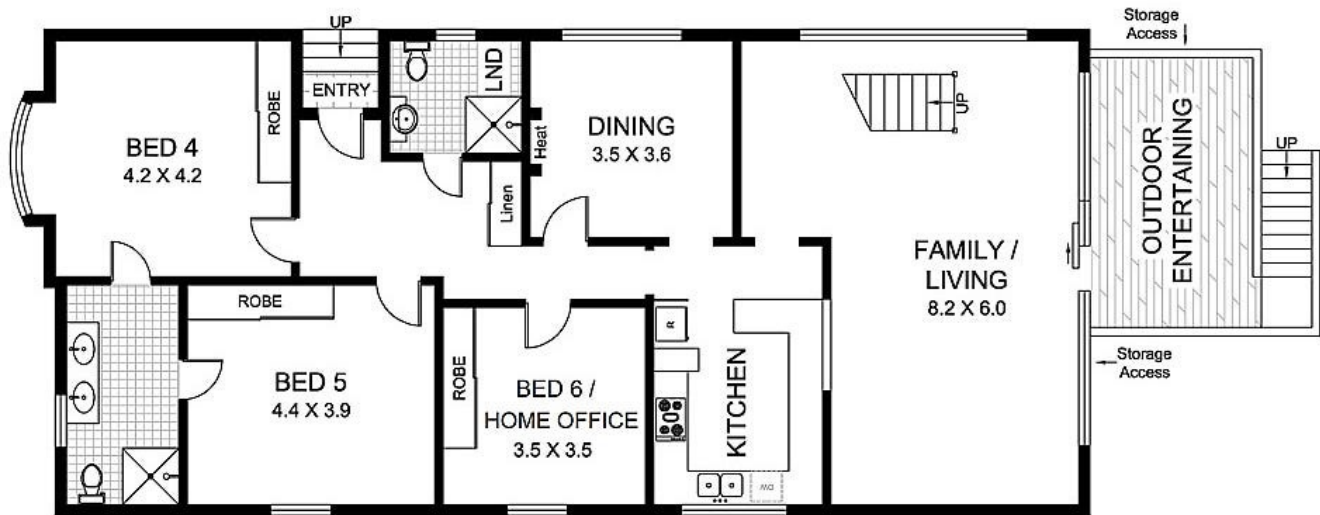
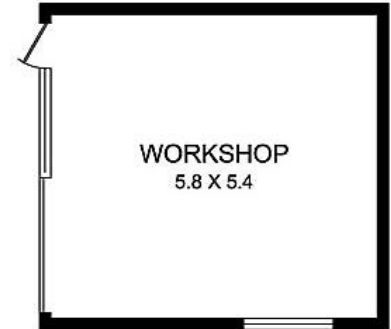
This welcoming home effortlessly combines original charm with modern comforts, providing a relaxed atmosphere for families. Revel in the vibrant lifestyle offered by this prime location, with renowned schools, Five Dock village, scenic parklands, and Birkenhead shopping precinct just moments away.

Raine & Horne Five Dock

Drummoyne makes no statement, representation or warranty and assumes no legal liability in relation to the accuracy of the information provided. Interested parties should conduct their own due diligence in relation to each property they are considering purchasing. All photographs, maps and images are representative only for marketing purposes.



LEVEL 2



LEVEL 1