



IDYLIC LIFESTYLE



3



2



2

9 Moores Road, Riddells Creek

ESR \$700,000 - \$750,000

It doesn't get much better than a creek running through your own tranquil patch at the end of a quiet court. This three bedroom home on 1.25 acres (approx.) has belonged to just one family. Now it's your turn to take up the idyllic lifestyle in leafy Riddells Creek.

This rare opportunity on a long and spacious block offers the potential for future renovation or subdivision (STCA). You can also fence off the side to raise animals or expand the existing veggie patch to grow more of your own. There's a chook pen and productive greenhouse to keep the natural goodness coming all year round.

The serene property features established trees – native and deciduous – hedging, a rose garden and built-in irrigation system. Relax and listen to birds on the front verandah or entertain on the undercover rear patio. The family friendly location means that the kids can safely ride their bikes, ditch the device and play each day in the great outdoors.

Inside is comfy all year round thanks to a 4Kw solar system, double insulation and window awnings. Snuggle by the cosy fire or bask in the light streaming through the sunroom. The double brick home features high ceilings and natural wood finishes. You can move right in or hatch plans for a modern makeover. There's two bathrooms and plenty of convenient storage, including a separate laundry and three car garage.

Property ID:	L502111
Property Type:	House
Garages:	2
Land Area:	1.25 acres

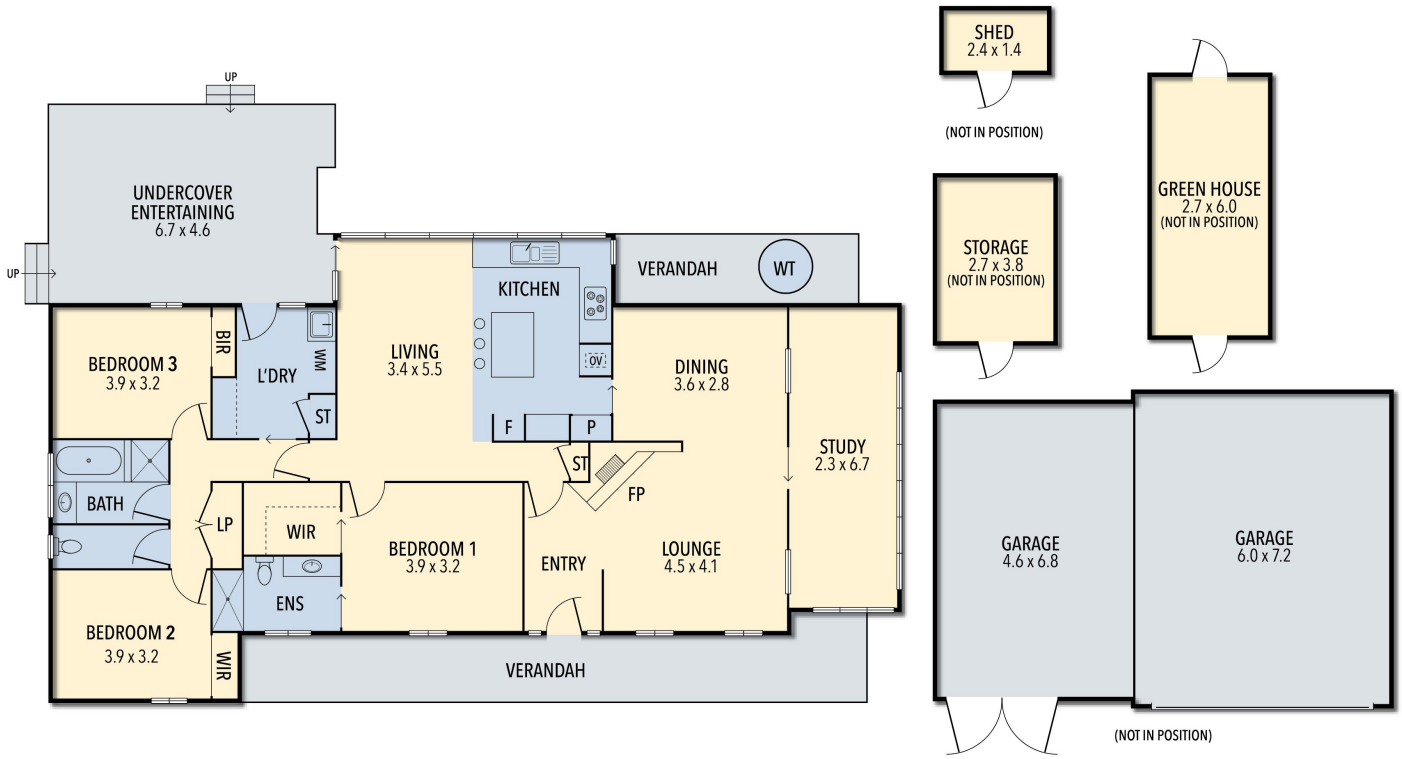
Ken Grech

0418 509 710

ken.grech@gisborne.rh.com.au

So make the move and become a part of this local community under an hour from Melbourne.

9 MOORES ROAD, RIDDELLS CREEK



THE ABOVE PLAN IS AN ARTIST'S IMPRESSION ONLY, IT INCLUDES ELEMENTS THAT ARE FOR DISPLAY PURPOSES ONLY AND MAY NOT BE TO SCALE. LANDSCAPING SHOWN IS INDICATIVE ONLY. DIMENSIONS ARE APPROXIMATE.

