



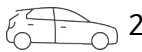
"The Outlook" At East Gosford - Stunning and brand new townhouses



3



2



2

32 Henry Parry Drive, East Gosford

UNDER CONSTRUCTION AND SELLING NOW

SELLING NOW

Three architecturally designed townhouses, currently under construction and ready to buy off the plan now!!!

On the crest with views of the Brisbane Water hinterland and just minutes to the trendy village of East Gosford, you can enjoy alfresco dining, multiple cafes, boutique shopping or visit the amazing Japanese Gardens or Art Gallery.

All 3 architecturally designed townhouses comprise 3 bedrooms with robes, two bathrooms, separate w/c, double garage with internal access, open plan living/dining/kitchen area with quality inclusions throughout and the generous separate private courtyards will not disappoint.

With the added bonus of being within the East Gosford school catchment.

This development is due to be completed in November 2020.

View Plans & Inclusions Etc. in our East Gosford Office

Property ID: L715843

Property Type: Townhouse

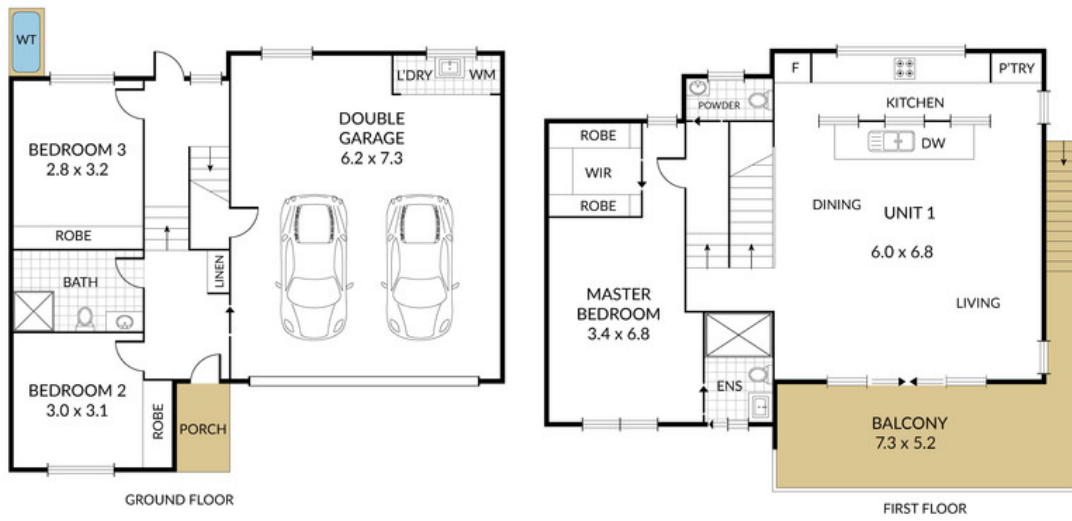
Garages: 2

Kristian Bingham

0433485326

kristian.bingham@eastgosford.rh.com.au

Disclaimer: This website has been prepared for marketing purposes only and may be subject to change without notice. The information and illustrations contained in this website are indicative only and is not to be construed as advice, a recommendation or an offer for the sale of property. All interested parties are directed to rely on their own enquiries and consult their professional adviser for the accuracy of all the aspects of the information.



Internal 200m² External 0m² Total 200m²

Disclaimer: Dimensions are approximate. We have obtained all information in this document from sources we believe to be reliable; however, we cannot guarantee its accuracy. Prospective purchasers are advised to carry out their own investigations