



Ground Floor apartment Owner Says Sell

Raine&Horne

Raine&Horne

Raine&Horne



2



1



1

1/47 Shirley Road, Wollstonecraft

Sold for \$828,000 (Sep 04, 2020)

Sold – Contact David Hill 0411 491 122

Ideally positioned in the favoured North East Corner, this spacious, elevated, ground floor apartment with minimal steps enjoys a tranquil, leafy setting and would be ideal for a young family with a pram or an elderly person seeking to avoid the daily stair climb

Bonus Features Include:

Boutique upgraded building of just 12

Oversized combined lounge/dining space with high ceilings

Undercover balcony off living area

Modern gas kitchen with plenty of storage

Stylish newly renovated bathroom

Two double bedrooms with built in wardrobes

Property ID: L581797

Property Type: Unit

Garages: 1

David Hill

0411 491 122

david.hill@rhmgroup.com.au

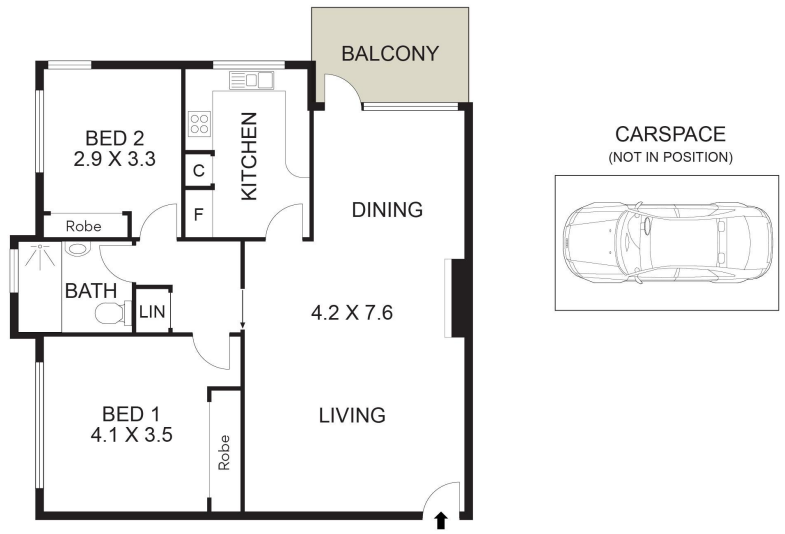
New windows, floating floors, carpet & paint

Open car space

Cosmopolitan Crows Nest just 10-12 minutes walk

Approximate Outgoings: Council \$260.00 pq // Water \$177.00 pq // Strata \$1669.00 pq

Approximate Size: 85.50sqm plus parking



1/47 Shirley road, Wollstonecraft

PLANS SHOWN ONLY INDICATIVE OF LAYOUT. DIMENSIONS ARE APPROXIMATE.

Measurements are approximate and not to scale. The vendor, agency and supplier will accept no liability for its accuracy. Interested parties are advised to make their own independent enquiries.

Raine & Horne

