



**BRASSALL**  
31 Currey Street

3  2  4 

## Don't wait any longer - THIS IS IT!

Absolutely gorgeous, with the charm and character of yesteryear plus a fantastic, near level block with easy wide side access and massive 4 bay "RANBUILD" Steel Shed.


MASSIVE SHED – EASY WIDE SIDE ACCESS – ENSUITED – NEAR NEW KITCHEN – FRESH PAINTED INSIDE AND OUT

- Great sized family lounge with loads of character
- Near new stunning modernized kitchen with massive pantry
- 3 great sized bedrooms with built in robes
- Master bedroom is ensuited
- Abundant Air Conditioning throughout
- Enclosed front verandah, perfect for a study or kids play room
- Stunning honey coloured polished floors
- Perfect back garden, great for BBQ's and entertaining
- 4 bay RANBUILD steel shed
- Near level corner low maintenance 809m2 allotment
- Secure child and pet friendly fencing

<b>Property ID</b>	L777424
<b>Property Type</b>	House
<b>Garages</b>	4
<b>Land Area</b>	809.0 sqm

### AGENT

**Richard Bird**

 0448 418 518

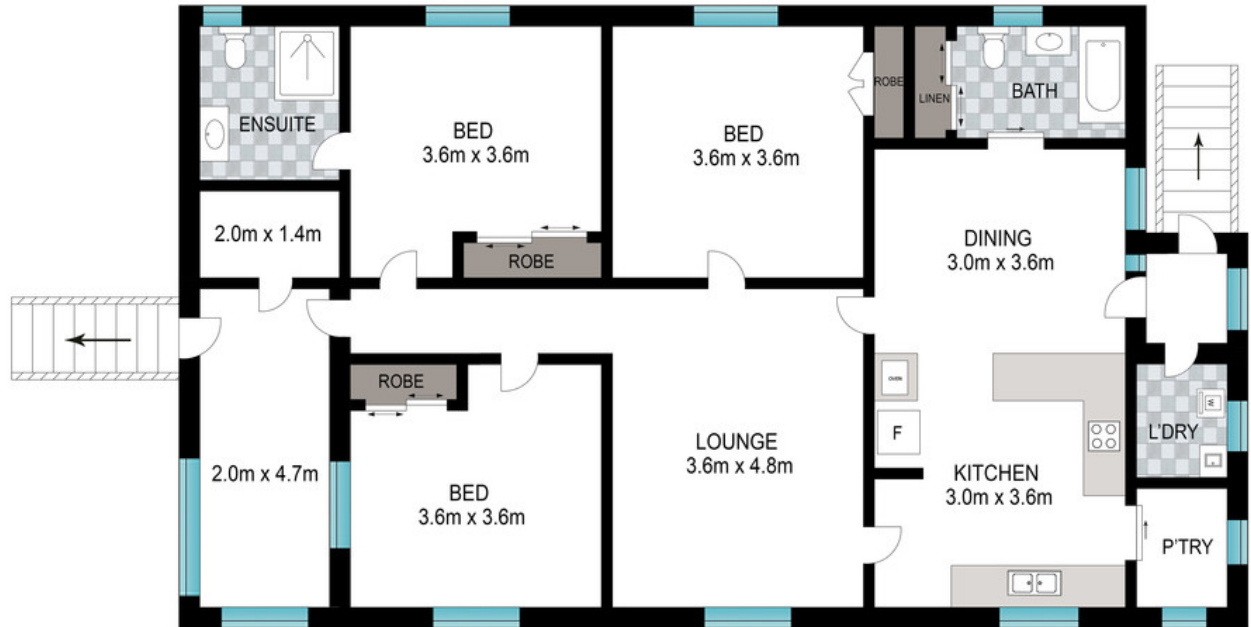
 richard.b@ipswich.rh.com.au

- Large 5 KW Solar System plus 2 large Water Tanks (20,000 ltr)

Located in one of Ipswich's most popular lifestyle locations, this home is stone's throw to the heart of Brassall, offering a peaceful family-friendly atmosphere, convenient access to Sporting clubs, Ipswich CBD and wide range of facilities including major shopping centres, medical facilities, restaurants and retail options. The area is also close to a variety of schools that are well service by public transport.

The owners are determined to sell and willing to listen to today's market, so don't hesitate to secure your viewing as it will not be on the market for long.

So please contact Richard Bird from Raine & Horne Ipswich for an inspection



Scale in meters. Indicative only. Dimensions are approximate. All Information contained herein is gathered from sources we believe to be reliable. However, we cannot guarantee its accuracy and interested persons should rely on their own enquiries.

Produced by [Open2view.com](http://Open2view.com)

31 Currey Street Brassall