



12 metres wide X 7.5 metres deep  
Roller doors 3 metres high  
Pitch height 4.5 metres, 3 Phase Power,  
Mezzanine Floor and Car Hoist

LIVE THE LIFE YOU'VE ALWAYS IMAGINED



4



2



5

## 57 McHale Way, Willowbank

Sold for \$720,000 (Sep 17, 2020)

Designed to make you smile and create memorable moments, that you will treasure forever.

333m2 UNDER ROOF – 1 ACRE BLOCK – POOL – 3 LIVING SPACES – 5 CAR ACCOM – DUCTED AIR CON – BIG 7.5 X 12 METRE SHED – 3 PHASE POWER- 6 X 6.5 METER INSULATED CARPORT – SUPER WIDE SIDE ACCESS – MASSIVE 10 X 4.5 METER COVER ENTERTAINING AREA

Truly – A beautiful and modern home that lets you live the life you deserve,

presented in ready to move in condition and boasting:

- 1 Acre or 4005m2
- 333m2 under roof including outdoor areas
- 3 separate living areas, including: family and family dining, living room and formal lounge or home theatre room
- Extremely well-located entertainers' kitchen, plus very large butler's pantry, stone bench tops, stainless appliances with a gas cooktop.

Property ID: L2970364

Property Type: House

Garages: 5

Land Area: 4005.0 sqm

**Richard Bird**

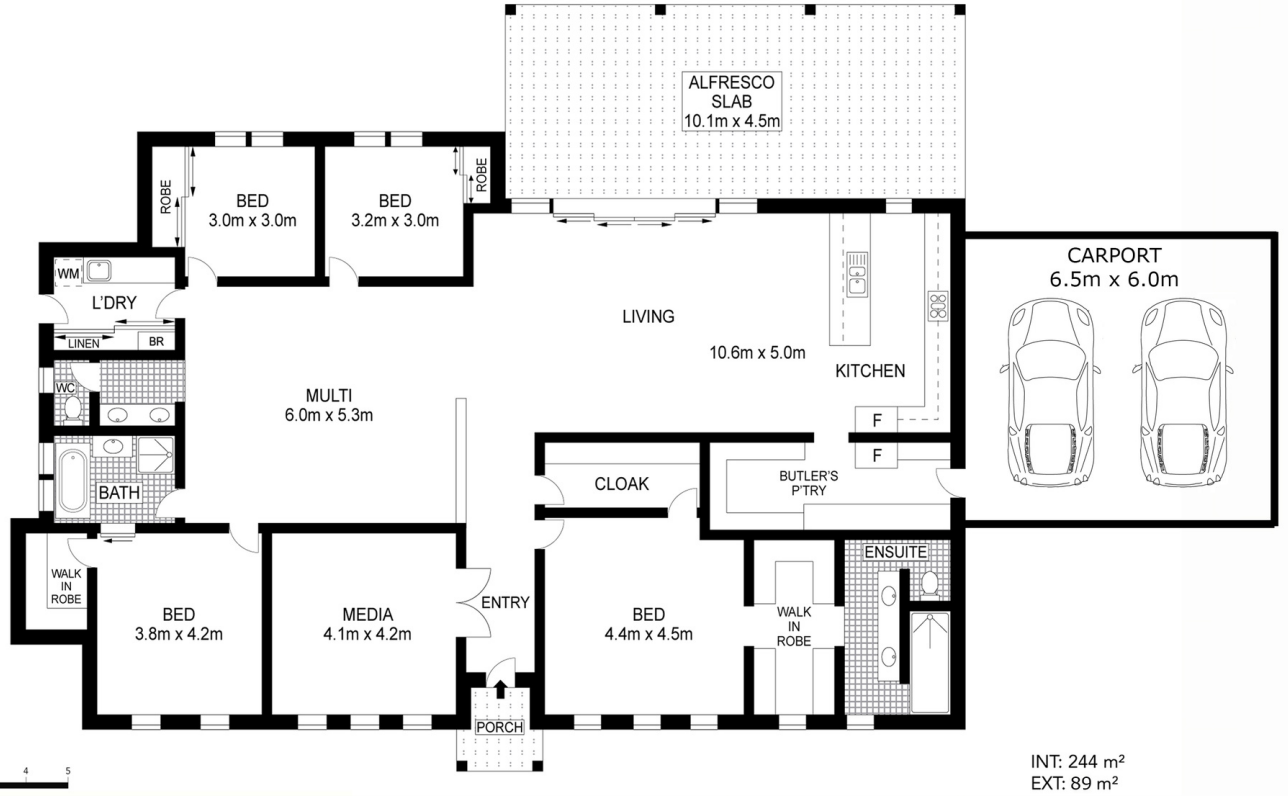
0448 418 518

richard.b@ipswich.rh.com.au

- Massive, covered outdoor entertaining, perfectly located adjoining the kitchen and family room.
- Stunning fully council compliant pool, surrounded by hardwood decking.
- 4 excellent sized bedrooms
- Master suite is over-sized and easily accommodates a king-sized bed and side tables. Double sized walk in robes and luxurious ensuite
- Bedroom 2 has a walk-in robe with the 2 remaining bedrooms enjoying built in robes
- Fully ducted and zoned air conditioning, fans and insulation throughout ensure year-round comfort.
- Abundant storage in either the Laundry Linen Closet or the purpose-built cloak room with main entry access and private main bedroom access.
- Massive 12 X 7 Machinery shed with 3-meter entry, mezzanine floor, Car hoist and 3 phase power
- 6 X 6.5 Carport with a cover entry directly into the butler's pantry.
- Townwater plus large water tank
- Good fencing around the home, perfect security for young children and pets.

A short drive the local shops, Chemist & Doctors and just a little further to the major shopping precinct of Yamanto with Large retailers and smaller all available. Easy access to the RAAF Base, Cunningham Highway, Centenary Highway as well as Orion Shopping Centre. The Willowbank area is serviced by the Amberley District Primary School and Walloon State School, Bremer and Rosewood High State Schools & public transport to Westmac Private College, Willowbank Raceway or major services.

Please contact Richard Bird from Raine & Horne Ipswich for an inspection



in meters. Indicative only. Dimensions are approximate. All information contained herein is gathered from sources we believe to be reliable. However, we cannot guarantee its accuracy and interested persons should rely on their own enquiries. Produced by [Open2view.com](http://Open2view.com)

57 Mchale Way Willowbank

Raine & Horne