



Location is just the first great attribute to this property



3



1



3

## 79 Blackall Street, Basin Pocket

Sold

Perfectly Positioned within 1.5km of the Ipswich CBD, this incredibly spacious Queenslander has the opportunity to raise and double your under roof floorspace.

This beautifully maintained Queenslander sits perfectly on an 822sqm block. To the rear, a recently constructed, covered, timber deck which over-looks the 9×4.5m sparkling in-ground swimming pool!

As you enter this lovely home, you will note the sunroom to the right, which could double as a study area. The living room has a comfortable ambience, with a lovely leadlight glass feature window plus a gabled archway, extra high, timber lined walls and ceilings throughout this stunning home.

Also comprising of 3 bedrooms, each with recently laid carpet. 2 are Queen Sized and the Master is King sized. There is also an extra-large formal dining room, with

Property ID: L1154482

Property Type: House

Garages: 3

Land Area: 822.0 sqm

**John Keating**

0452 522 842

[john.k@ipswich.rh.com.au](mailto:john.k@ipswich.rh.com.au)

gorgeous polished timber flooring.

A tastefully renovated, HUGE farmers' styled kitchen with dining area. Comprising of lovely glass cabinetry, and loads of cupboards and bench space, gas stove and gas hot water, plus there is no limit on the fridge/freezer space here too!

There is a fairly recently renovated bathroom, with stained glass door, and separate toilet.

Fabulous big back garden, extra wide side access, plus 3 under cover parking spaces, this property has everything you need in a home, and just a very appealing property overall.

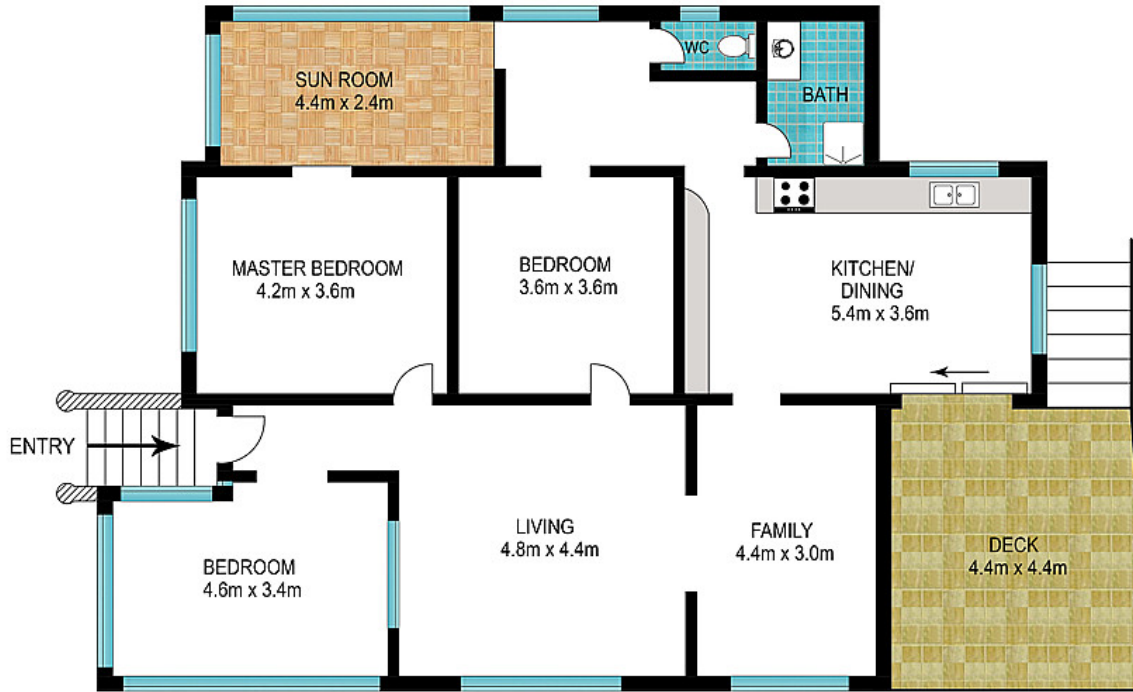
A property which was unaffected by any flooding, this gorgeous Queenslander style home, circa early 1950's, has been lovingly taken care of by the current owner for over

30 years! It is walking distance to Riverlink Shopping Centre, train station, buses, and

easy walking distance to the most prestigious private schools in the Ipswich CBD area,

everything you need is at your fingertips!

Call now for your own private inspection.



Scale in meters. Indicative only. Dimensions are approximate. All information contained herein is gathered from sources we believe to be reliable. However, we cannot guarantee its accuracy and interested persons should rely on their own enquiries.

Produced by [Open2view.com](http://Open2view.com)

79 Blackall Street, Basin Pocket

INT: 255m<sup>2</sup>