






**Level Living! Shops, Parks and Reserves!**

 4
  2
  2

## 19 Hughes Crescent, Kiama Downs

Sold for \$770,000 (Mar 13, 2020)

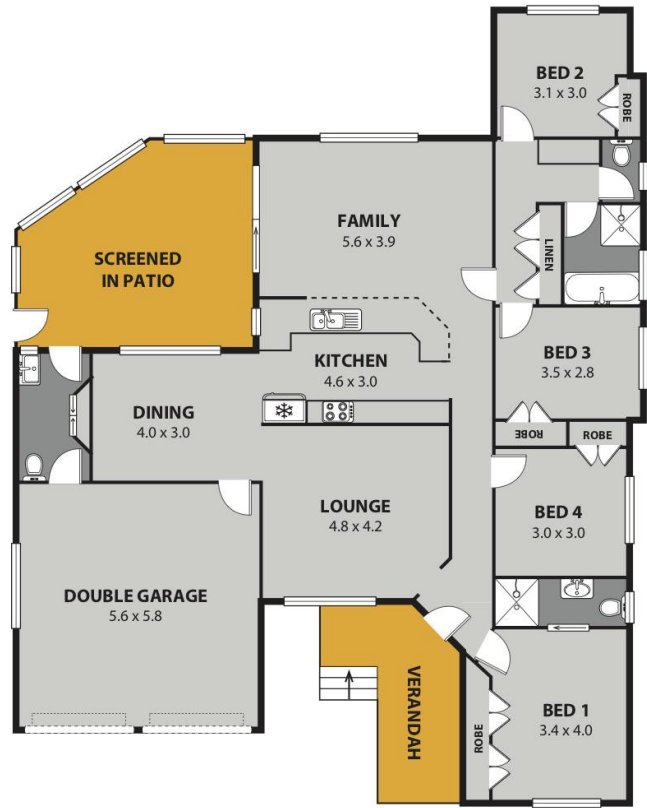
First time ever offered to the market! Enjoy this purpose-built home on one level. The clever design allows for multiple living areas adjoining the central kitchen and dining area. Impressive large bedrooms, all with built-in-robos and ensuite in the main. Enjoy sunny rear patio which has cleverly been enclosed capturing the north-easterly aspect. Large garaging with handy 3rd powder room in laundry. Carefree established landscaped gardens set the scene in this ideal location. Easy stroll to shops, reserves, sporting ovals and coastal cycle/walking tracks to Jones Beach.

Features include:

- Purpose built single level home
- Established landscaped gardens
- Close to shops, reserves, sporting oval and coastal cycle/walking tracks to Jones Beach
- Fully ducted Air conditioning system
- Never been Sold before!

<b>Property ID:</b>	L1028707
<b>Property Type:</b>	House
<b>Garages:</b>	2
<b>Land Area:</b>	667.0 sqm

**Scott Douglas**  
 0450 099 227  
 scott.douglas@kiama.rh.com.au



**19 HUGHES CRES, KIAMA DOWNS**  
**INTERNAL SPACE 181m<sup>2</sup> (approx)**



Plans shown are for presentation purposes and are not part of any legal document or title and are subject to errors, omissions, inaccuracies and should not be used as sole and accurate reference. Particulars given are for general information only and do not constitute any representation on the part of the vendor or agent. No liability will be accepted.

AR2

RP2 NET AU

