



## Palatial Luxury Residence



4



3



2

## 4 Danube Street, Kiama

Sold for \$1,600,000 (Jun 30, 2020)

Built to the highest of standards and offering an array of living options to suit all buyers.

This 'No Expense Spared' property offers a classic design full of custom features rarely seen in homes these days.

Positioned in a highly sought- after location taking full advantage of the sun soaked northerly aspect with Coastal, Pacific Ocean and rural outlook.

Be greeted by the private gated entry, fully landscaped gardens with impressive water feature and wide 22m frontage.

Open the VIP front door to reveal a grand reception with stunning architectural staircase and circular upper hallway voids.

Formal lounge, sunken sitting room, open plan family area plus purpose- built media room with Movie picture screen, elevated theatre seating and optic fibre ceiling lighting to give you the full cinematic experience.

The expansive kitchen is A-grade quality with central casual dining and workspaces.

<b>Property ID:</b>	L2159861
<b>Property Type:</b>	House
<b>Building / Floor Area:</b>	330
<b>Garages:</b>	2
<b>Land Area:</b>	653.0 sqm

**Steve Pryor**  
0408 423 328  
[steve.pryor@kiama.rh.com.au](mailto:steve.pryor@kiama.rh.com.au)

All bedrooms are double plus sized, main bedroom with walk-in fully integrated storage and magnificent ensuite bathroom.

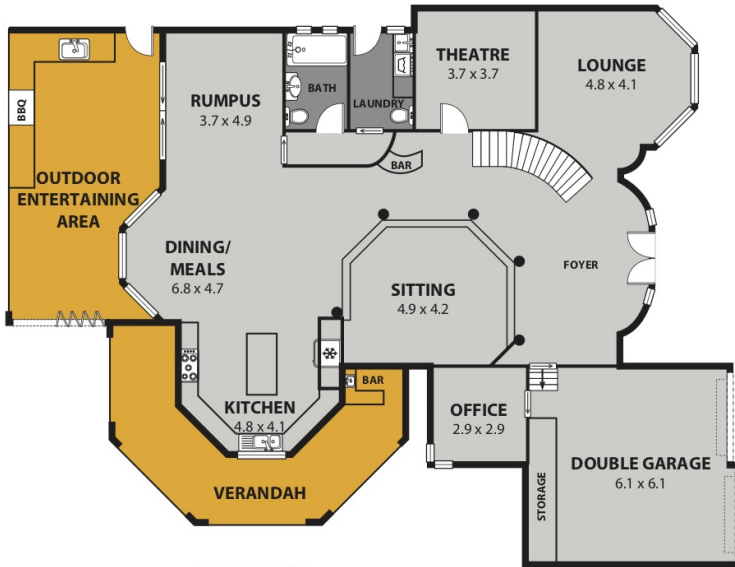
The high detailed ceilings, built-in-bar, separate office will all impress.

Open the outside to inside with the custom outdoor/kitchen/entertainment area. The swimming pool offers summer time entertaining as well as relaxing visually appealing outdoor features.

- Low Maintenance – Fully Landscaped Private Gardens
- Huge Double Height Entry Foyer
- Electric Driveway & Front Entry Gates.
- Custom designed concrete suspended marble staircase with architecturally designed wrought iron railing.
- ILVE oven with self-cleaning liners and Ceran cooktop
- Boutique granite benchtop with large granite island with architectural designed carving.
- 70,000 litre concrete tiled swimming pool with lights
- Granite outdoor bar area.
- Outdoor kitchen with BBQ & sink with hot/cold water with granite benchtop & glass splashback.
- Terracotta tiled roof
- Solar Panels
- Multiple Features, Custom touches throughout.
- Fully Ducted Air-Conditioning for added comfort.
- Immaculate A1 presentation throughout.

All Inspections by Private Appointment. Contact Steve Pryor on 0408 423 328 or Scott Douglas on 0450 099 227.

Information Booklet and further details available on request.



**GROUND LEVEL**



**UPPER LEVEL**

4 DANUBE ST, KIAMA  
INTERNAL SPACE 330m<sup>2</sup> (approx)



Plans shown are for presentation purposes and are not part of any legal document or title and are subject to errors, omissions, inaccuracies and should not be used as sole and accurate reference. Particulars given are for general information only and do not constitute any representation on the part of the vendor or agent. No liability will be accepted.

AR2

AR2/NETAI

**Raine&Horne**