



**BLACKMANS BAY**  
18 Flowerpot Crescent

4  2  2 

## FABULOUS FLOWERPOT CRESCENT

Every room in this family home has amazing River, Beach and Mountain views. There are bi-fold doors to the deck area, which maximizes the indoor/outdoor flow.

Beautiful Blackmans Bay Beach is only a 2 minute walk away and stroll along a little further to local restaurants and cafe's.

This home offers 4 bedrooms, the main suite being very spacious and features a "Romeo & Juliette" balcony which overlooks Blackmans Bay Beach. There is a two-way bathroom and all the bedrooms have large built in robes.

The lower level is dedicated to living. There are lovely timber floors all throughout and bi-fold doors. The kitchen has Caesar-stone benchtops, quality appliances and there is a family room for casual living.

The formal lounge has a wood heater to warm you in the winter and a dining area which opens onto the deck. NBN fibre to the premises is available.


All the windows are double glazed and there is a double garage with internal access.

This is a contemporary, smart and very functional home which you need to view today.

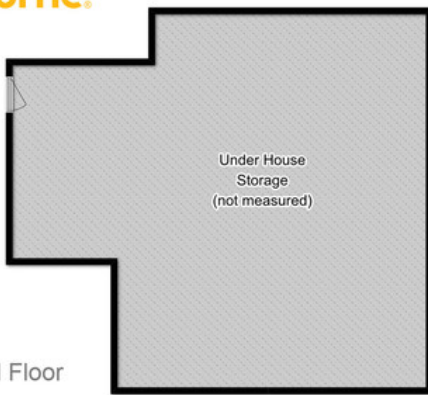
<b>Property ID:</b>	18728292
<b>Property Type:</b>	House
<b>Building / Floor Area:</b>	157
<b>Garages:</b>	2

### AGENT

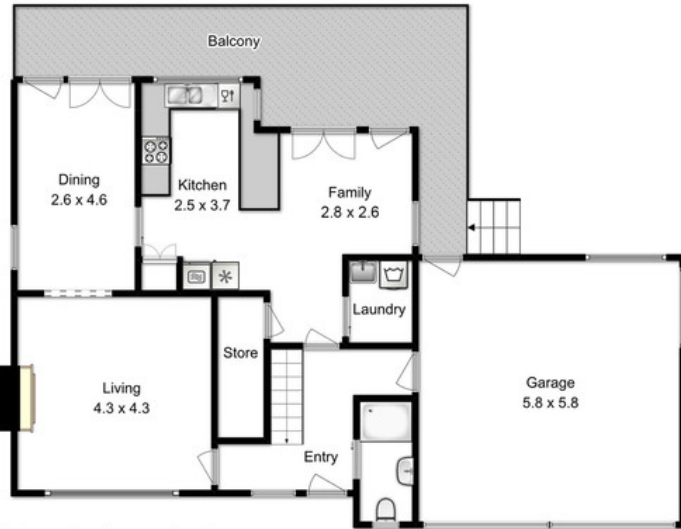
**Samantha Scarlett**

 0447 550 288

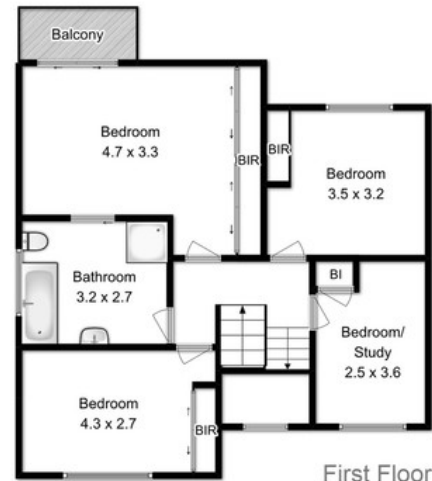
 [samantha.scarlett@kingston.rh.com.au](mailto:samantha.scarlett@kingston.rh.com.au)



Lower Ground Floor



Ground Floor



First Floor

All measurements are internal and approximate.  
This plan is a sketch for illustration, not valuation.  
Produced by Open2view.com

Total Approx. Floor Area : 190 sqm