



**BLACKMANS BAY**  
6/25 Powell Road

3  2  2 

## EXECUTIVE TOWNHOUSE WITH BEACH IN REACH

Fantastic executive town house situated in popular Blackmans Bay approximately 800 metres walk to the sands of the beach and a little further to quality cafe's and restaurants.

North facing living zone extends through sliding glass door to elevated deck providing room for large outdoor settings and BBQ making it the perfect entertainer.

European appliances, quality carpets, excellent tiles, stone bench-tops and superb tap-ware meld with a light neutral colour scheme providing a spacious and airy feel with a touch of elegance and sophistication.

Heated flooring features in the ensuite bathroom, with the main bathroom including a bath tub plus there is a powder room on the lower level providing the residence with a third toilet.

Comprising of three good sized bedrooms (master accommodates king-size furniture) all with built-in robes. The double garage is oversized and boasts internal access. Energy saving features include LED lighting and double glazed windows.


Amongst the security of a fully fenced establishment with electric gates and video intercom whilst enjoying the privacy of a spacious fenced yard with a selection of fruit trees and a garden shed to keep things neat.

Located approximately 15 minute drive from Hobart, bus service and schools are within walking distance, this is one you don't want to miss out on. Call us today to view this Executive Townhouse with Beach in Reach.

<b>Property ID:</b>	19916550
<b>Property Type:</b>	House
<b>Building / Floor Area:</b>	173
<b>Garages:</b>	2

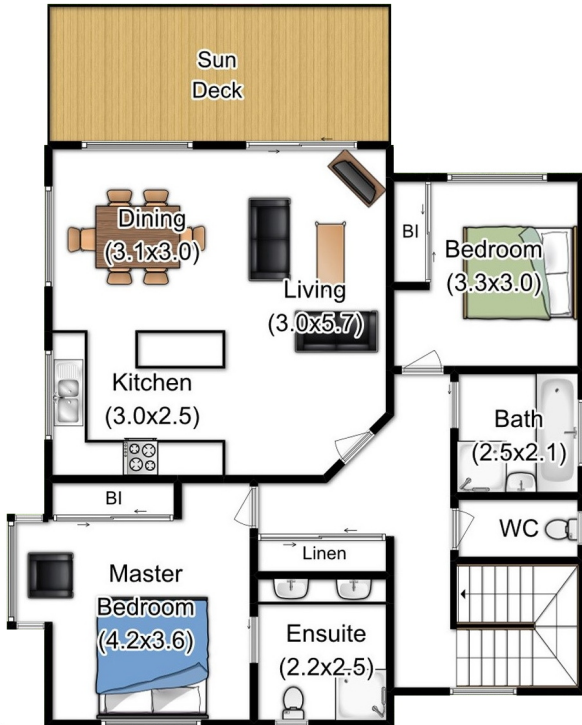
### AGENT

**Brendan Leung**

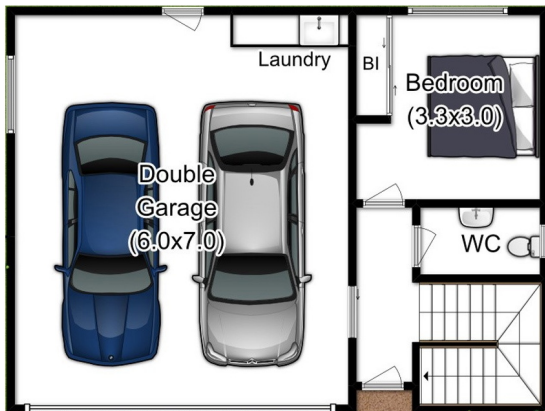
 0439 591 559

 [brendan.leung@kingston.rh.com.au](mailto:brendan.leung@kingston.rh.com.au)

## First Floor



## Ground Floor



Approx. First Floor Area: 99sqm  
Approx. Ground Floor Area: 74sqm  
Approx. Sun Deck Area: 15sqm

All measurements are approximate.  
This plan is a sketch for illustration, not valuation.  
Produced by Open2view.com