



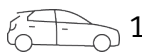
SOLD BY HAZEL MCNAMARA 0402 913 537



2



1



1

2/216 Longueville Road, Lane Cove

Sold

Oversized apartment moments from the heart of Lane Cove Village

An enviable lifestyle address with a level 700m stroll to Lane Cove's bustling village atmosphere and footsteps from express city buses and a host of local schools, this two bedroom apartment represents an affordable offering within this sought after cosmopolitan enclave. Boasting spacious open plan living/dining that flows onto large private courtyard, the property is comfortable as is with scope to further update and capitalise if desired and its exceptionally convenient setting delivers instant appeal to young families, busy professionals, downsizers and investors alike.

- Combined living/dining space flowing to large private courtyard
- Two double bedrooms, master with built in wardrobes
- Easy access to lock up garage with additional separate storeroom
- Quiet well-maintained block comprising of only 27 units in complex
- Remarkable opportunity for first homebuyers, keen renovators and astute investors

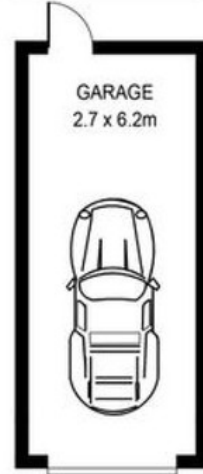
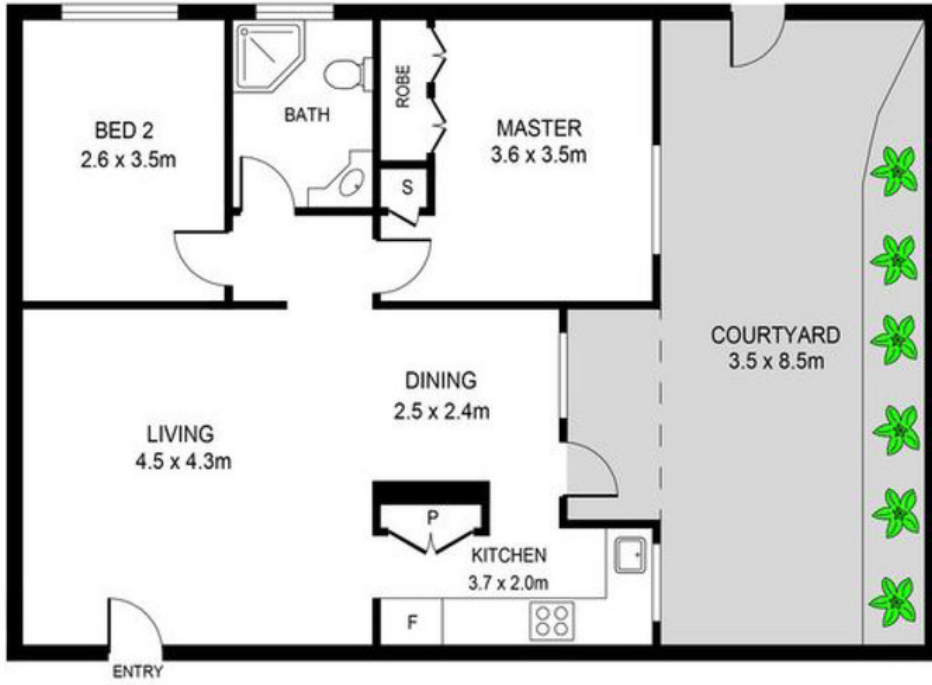
Property ID:	L430066
Property Type:	Apartment
Building / Floor Area:	63
Garages:	1
Land Area:	1975.0 sqm

Hazel McNamara
0402 913 537
hazelm@lanecove.rh.com.au

Council Rates: \$328 p/q (approx.)

Water Rates: \$172 p/q (approx.)

Strata Rates: \$993 p/q (approx.)



2/216-220 Longueville Road, Lane Cove

PLANS SHOWN ONLY INDICATIVE OF LAYOUT. DIMENSIONS ARE APPROXIMATE.
Measurements are approximate and not to scale. The vendor, agency and supplier will accept no liability for its accuracy. Interested parties are advised to make their own independent enquiries.

Raine&Horne.