



LANE COVE  
20/12-14 Epping Road

2  1  1 

## Designer living in the heart of Lane Cove

Desirably positioned at the rear of the boutique Micasa' complex, this impeccably appointed two-bedroom apartment delivers the perfect fusion of convenience with stylish comfort. Heightened by luxury modern updates including a gourmet European kitchen, designer bathroom and high-end finishes throughout, its remarkably quiet yet ultra-handly address is mere footsteps from Lane Cove's vibrant cosmopolitan village hub, cafs and express city buses. One of only 24 tightly held full brick security residences with convenient access via Cox's Lane, it represents an outstanding lifestyle or investment opportunity ready for immediate enjoyment.


- Sought after mid-level corner location with leafy district vistas from Cox's Lane
- Light-filled living area with oak floorboards flowing to private Juliet balcony
- Granite induction kitchen equipped with a full suite of premium Smeg appliances
- Light-filled bedrooms, master with built-in robes, ceiling fan, plantation shutters
- Custom-designed bathroom with deluxe Villeroy & Boch and Rogerseller fittings
- Reverse cycle air conditioning, oversized lock-up garage, secure intercom entry
- Stroll to the area's bustling caf atmosphere, footsteps from express bus services
- Easy access to Chatswood and the CBD, moments to local schools and parklands


Council Rates: \$303 p/q

Property ID	19637155
Property Type	Apartment
Garages	1

### AGENT

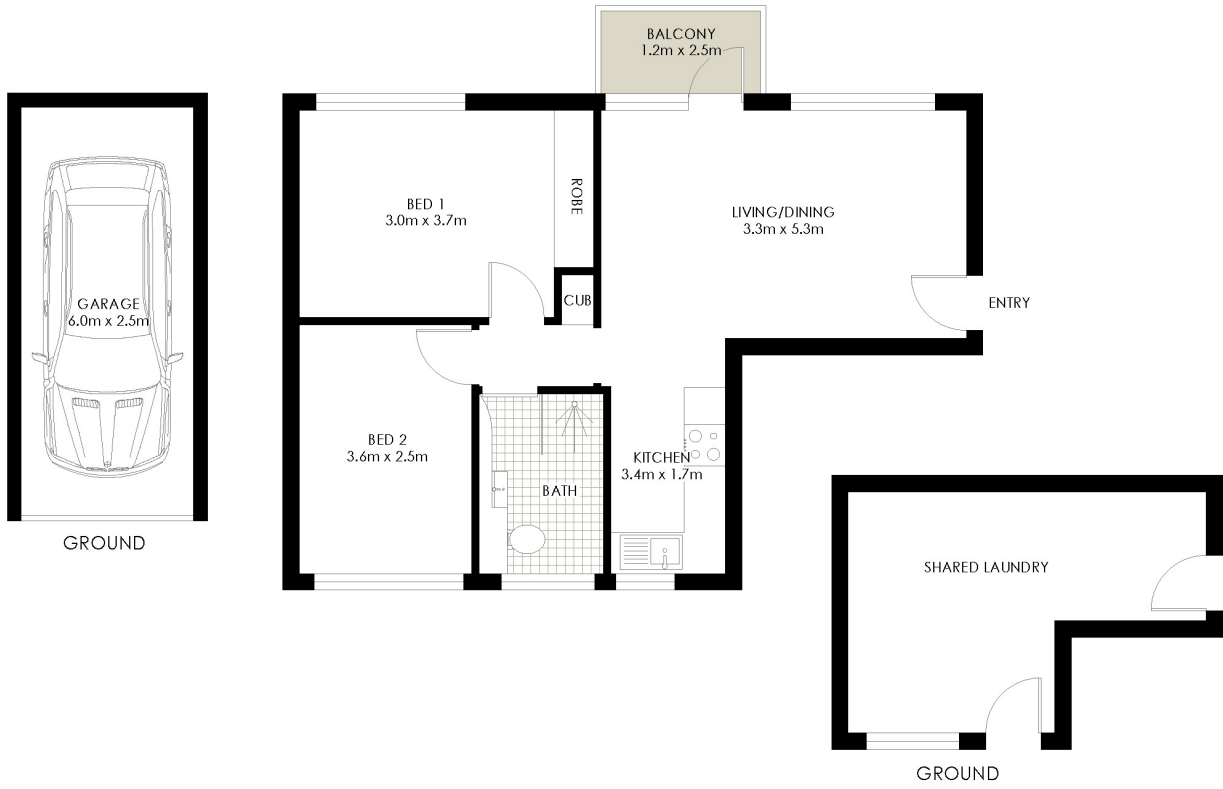
**Stuart Bourne**

 0415 887 114

 [stuartb@lanecove.rh.com.au](mailto:stuartb@lanecove.rh.com.au)

Water Rates: \$172 p/q

Strata Rates: \$542.55 p/q



20/12-14 Epping Road, Lane Cove

PLANS SHOWN ONLY INDICATIVE OF LAYOUT. DIMENSIONS ARE APPROXIMATE.  
 Measurements are approximate and not to scale. The vendor, agency and supplier will accept no liability for its accuracy. Interested parties are advised to make their own independent enquiries.

Raine & Horne®

