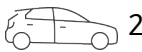




Charming Family Home



23 Kingslangley Road, Greenwich

For Sale By Negotiation

Located in a quiet leafy street this character home is surrounded by a spacious perimeter of land on all sides providing privacy and freedom to enjoy family living at its best. This property has been beautifully restored with timber floors, high ceilings and original fireplaces.

- Combined family and casual dining
- Formal lounge and formal dining rooms
- Open plan kitchen with European appliances
- 3 bedrooms with free standing wardrobes
- Spacious bathroom, separate internal laundry
- Spacious tiled outdoor BBQ entertaining area and level lawn
- Ducted air conditioning, timber flooring and high ceilings
- Off street parking for 3 cars

Property ID: L2505792

Property Type: House

Open Parking: 2

Mary-Anne Fitzgerald

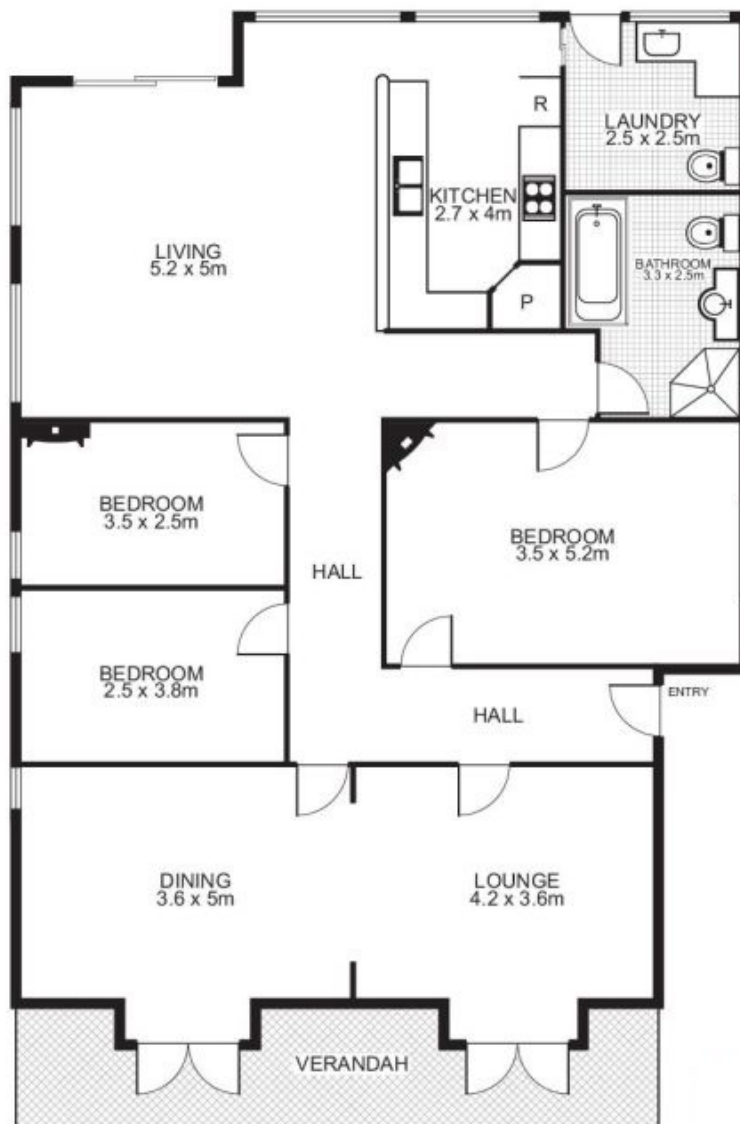
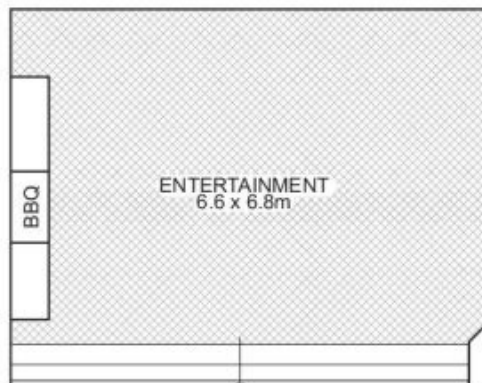
0418 648 654

maryannef@lanecove.rh.com.au

- Close to transport, schools and all amenities

Inspect by appointment, contact Mary-Anne Fitzgerald on 0418 648 654 to book an inspection

23 Kingslangley Road, GREENWICH



This floor plan is intended as a guide only. Layout dimensions are approximate only. No representation or warranties of any nature whatsoever are given or intended. Any person using this information should rely on their own enquiries.