



**DRUMMOYNE**  
403/7 Church Street

2 2 2

## Brand new apartment with City skyline & harbour views

Blending convenience with stylish modern design, this large two-bedroom apartment relishes in a premier location in the heart of Drummoyne. Boasting an enviable North East corner position in the newly completed 'Tempo' complex, the high-calibre appointments and spacious interiors are complemented with over-sized windows to maximize natural light. While the flawless indoor/outdoor connection provide a comfortable lifestyle pad a stone's throw from the eclectic village atmosphere, footsteps to city bus services and an easy commute to the city.

- Expansive views of the the city skyline, Harbour Bridge and Parramatta River
- Open plan living with floor-to-ceiling glass sliders to entertaining balcony
- Stylish gas kitchen fitted with premium Miele appliances
- Spacious bedrooms with built-ins, modern fully tiled bathroom/combined laundry
- Video intercom and lift access to two-car security parking and storage cage
- Stroll to cafes, village shops, The Bay Run, city buses and parks

Council Rates: \$285 p/q (approx.)

Water Rates: \$172 p/q (approx.)

Strata Rates: \$1,063 p/q (approx.)

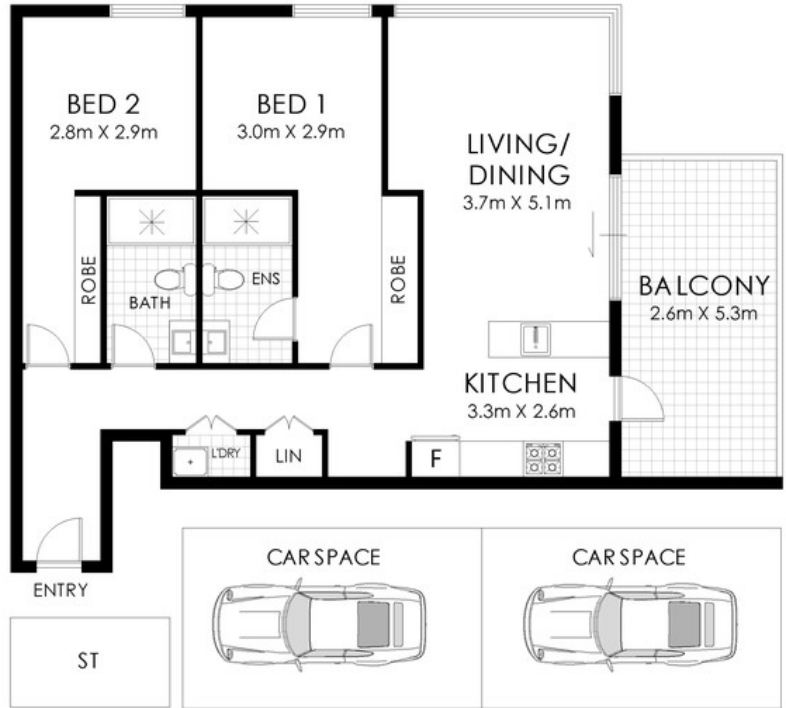
Property ID	L420782
Property Type	Apartment
Building / Floor Area	13
Garages	2

### AGENT

**Alex Banning**

0434 131 903

alexb@lanecove.rh.com.au



403/7 Church Street, Drummoyne

PLANS SHOWN ONLY INDICATIVE OF LAYOUT. DIMENSIONS ARE APPROXIMATE. Measurements are approximate and not to scale. The vendor, agency and supplier will accept no liability for its accuracy. Interested parties are advised to make their own independent enquiries.

**Raine & Horne**

