

Ultra-sleek interiors and a prime parkside location



52/554 Mowbray Road, Lane Cove

Auctioned

Showcasing stylish modern design with a generous 122sqm on title, this impressive 'Northwoods' apartment blends convenient urban living with the appeal of its prized parkland surrounds. Impeccably finished with designer European fittings and boasting a huge master suite, second double bedroom plus private study nook, its sun-filled northerly aspect and spacious interiors provide a comfortable low maintenance lifestyle haven. Captivating homebuyers and astute investors alike, its prime setting at the quiet end of Mowbray Road is just footsteps from express city bus connections, local providores, cafés and an easy stroll to Mowbray Public School and the recently completed Mindarie Park.

- Flowing open plan design cascades to a covered leafy entertaining balcony
- Designer gas kitchen appointed with stone benchtops and European appliances
- Floor-to-ceiling glass sliders and shutters ensure ample sunlight and privacy
- Beautifully appointed double bedrooms both with fitted mirrored wardrobes
- Oversized master bedroom with luxury floor-to-ceiling tiled modern ensuite
- Private study nook and main bathroom with combined bathtub/shower

Property ID:	L960261
Property Type:	Apartment
Building / Floor Area:	122
Garages:	2

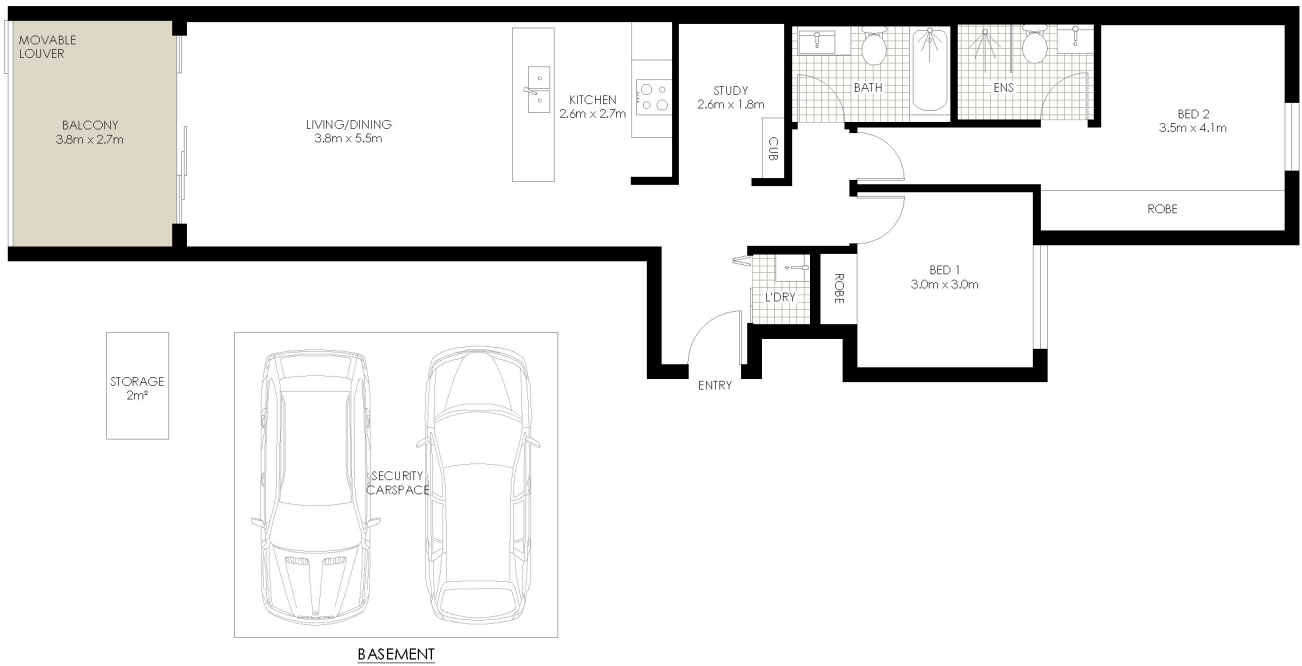
Alex Banning
0434131903
alex@lanecove.rh.com.au

- European laundry, ducted reverse cycle air plus ceiling fans in bedrooms
- Intercom entry and lift to side-by-side security parking plus storage cage
- Walk to city buses, shops, cafés and moments to Lane Cove's village precinct

Council Rates: \$328 p/q (approx.)

Water Rates: \$179 p/q (approx.)

Strata Rates: \$1,621 p/q (approx.)



52/554-556 Mowbray Road, Lane Cove

PLANS SHOWN ONLY INDICATIVE OF LAYOUT. DIMENSIONS ARE APPROXIMATE.
 Measurements are approximate and not to scale. The vendor, agency and supplier will accept no liability for its accuracy. Interested parties are advised to make their own independent enquiries.

Raine & Horne

