



LANE COVE  
9/11 Helen Street

3  2  2 

## Executive top floor apartment of house-like proportions

Impressive in both its size and sophisticated appointments, this stylish three-bedroom residence enjoys a premier top-floor position within an exclusive full brick security complex of just 10. Framed by a stunning wraparound balcony and occupying a rarely offered 194sqm (approx.) on title, its seamless indoor/outdoor connection and coveted parkland setting deliver instant appeal to discerning homebuyers and astute investors in search of convenience, space and comfort. Promising a carefree lifestyle only moments from Lane Cove's eclectic village precinct, its tranquil leafy position is a leisurely stroll to Artarmon station, express city buses and an easy commute to both Chatswood and the CBD.


- Expansive open plan living area cascading to an ultra-private wraparound balcony
- Gourmet Smeg appointed gas kitchen with granite benchtops and Bosch dishwasher
- Bright and spacious bedrooms all with built-in robes, fully tiled modern bathrooms
- Oversized master suite with private balcony and sunny tree-fringed northerly outlook
- Internal laundry, timber floorboards, reverse cycle air and gas bayonet in living area
- Elegant entry foyer, marble staircase and intercom access within a tightly held block
- Classic three-stepped cornices, carpeted bedrooms and side-by-side security parking
- Stroll to Artarmon station, bus Interchange, village shops, cafes, schools and parks

Council Rates: \$328 p/q (approx.)

Property ID:	20415726
Property Type:	Apartment
Building / Floor Area:	194
Garages:	2

### AGENT

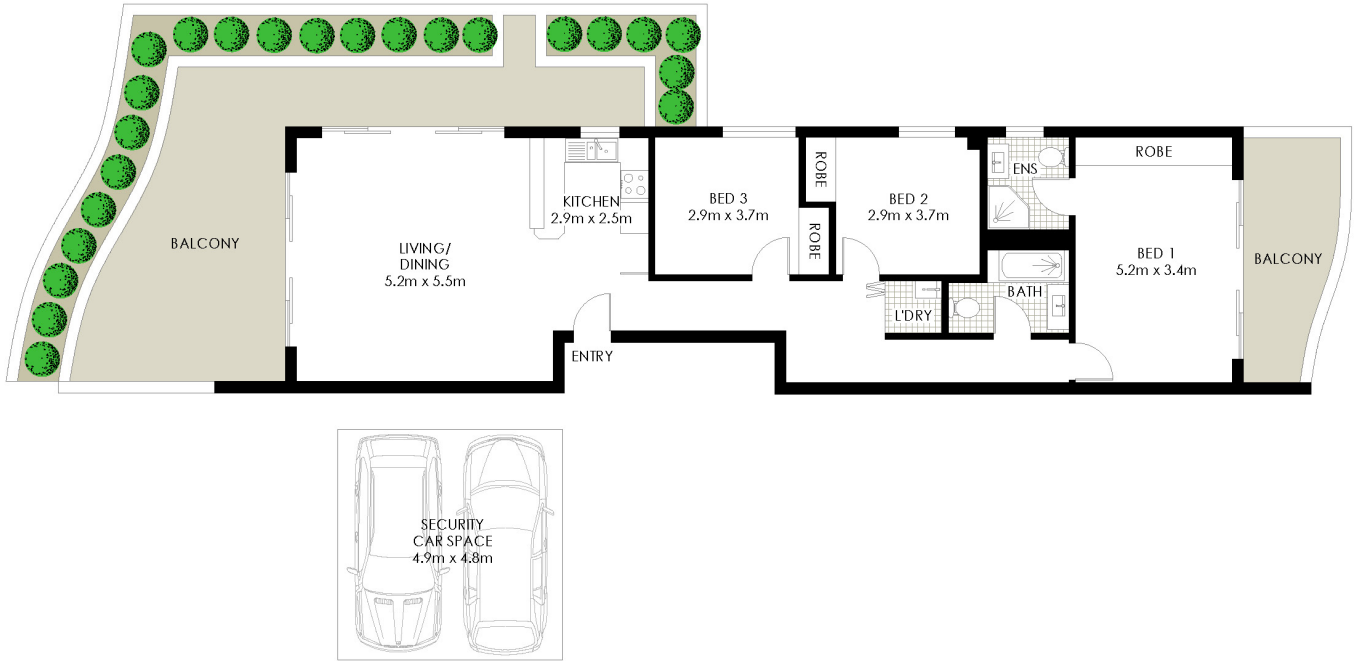
**Stuart Bourne**

 0415 887 114

 [stuartb@lanecove.rh.com.au](mailto:stuartb@lanecove.rh.com.au)

Water Rates: \$172 p/q (approx.)

Strata Rates: \$1,683 p/q (approx.)



9/11 Helen Street, Lane Cove North

PLANS SHOWN ONLY INDICATIVE OF LAYOUT. DIMENSIONS ARE APPROXIMATE.  
Measurements are approximate and not to scale. The vendor, agency and supplier will accept no liability for its accuracy. Interested parties are advised to make their own independent enquiries.

**Raine&Horne.**

