

Raine&Horne
Liverpool

Raine&Horne
Liverpool



Raine&Horne
Liverpool



LIVERPOOL

8/73-75 Goulburn Street (Cnr Of Elizabeth And Goulburn)

2  1  1 


2 Bedroom ! Great Location Cnr of Elizabeth Street & Goulburn Street Liverpool


Fantastic well kept two bedroom apartment offers built in wardrobes, internal laundry, intercom, balcony, kitchen, combined lounge and dining and a single car port. Located on the corner of Elizabeth Street & Goulburn Street right across the road from Bigge Park and Liverpool Hospital and within only a few minutes walk to Liverpool Tafe, train station, Westfields Shopping Centre and Liverpool CBD, this apartment is ideally located. Currently leased, this presents itself as a great opportunity for all buyers!

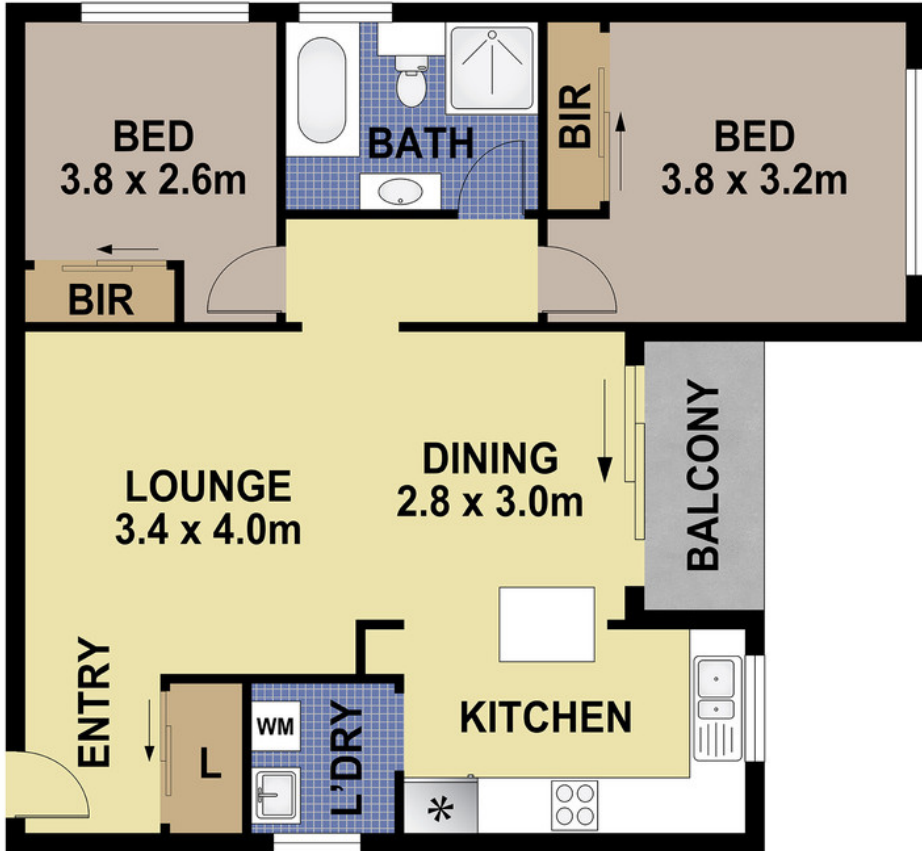
Property ID:	19233184
Property Type:	Unit
Carports:	1

AGENT

Vince Labbozetta

 0433 168 613

 vince@rhagents.com



8/73-75 GOULBURN STREET, LIVERPOOL

DISCLAIMER

PLANS SHOWN ARE FOR MARKETING PURPOSES ONLY. ALL DIMENSIONS ARE APPROXIMATE AND NOT TO SCALE. THEY ARE SUBJECT TO ERRORS AND INACCURACIES AND NO LIABILITY WILL BE ACCEPTED. INTERESTED PARTIES SHOULD MAKE THEIR OWN INQUIRES.