



ARNCLIFFE
20 Knight Street

2  1  2 

Entertainer's paradise with stunning panoramic views

Auctioned for \$1,355,000 (Apr 11, 2018)

Quietly set back from the street this home captures stunning district and water views from its elevated vantage point. The home is set on 449 sqm and has been beautifully renovated throughout. The property features spacious light filled interiors, a flowing open plan design, and large covered deck which, along with the private garden, offers year-round entertaining. There are two bedrooms; both with built in wardrobes, secure lock up garage, and off-street parking for multiple vehicles. Conveniently positioned the home is located within easy distance of city trains, schools, the airport, and leafy local parklands.

Flowing open plan design, spacious light filled interiors, renovated throughout

Stunning new kitchen with gas cooking, island benchtop, glass splashback

Two generous bedrooms, both with built-in wardrobes

Large covered entertaining deck with panoramic district and water views

Rear BBQ area, lush front lawn, established gardens, storage room

Walk to leafy parklands, Banksia train station, local shops

Easy drive to coastal and city shopping, beaches, and an array of eateries


Suburb Profile: Arncliffe, 2205


Arncliffe is a suburb in southern Sydney, 11 kilometres from the Sydney central business

Property ID:	5386939
Property Type:	House
Garages:	2

AGENT

Filippo D'Arrigo

 0416118621

 filippo.darrigo@rhmarrickville.com.au

district. Arncliffe is a mostly residential area, with many peaceful, tree-lined streets, local schools, and leafy parklands filling the suburb. The area is well serviced by excellent city transport links with a choice of train stations in walking distance and numerous bus routes servicing the area. It's a short drive to thriving urban centres at Brighton-Le-Sands and Rockdale putting a diverse array of eateries and lifestyle attractions within easy distance.

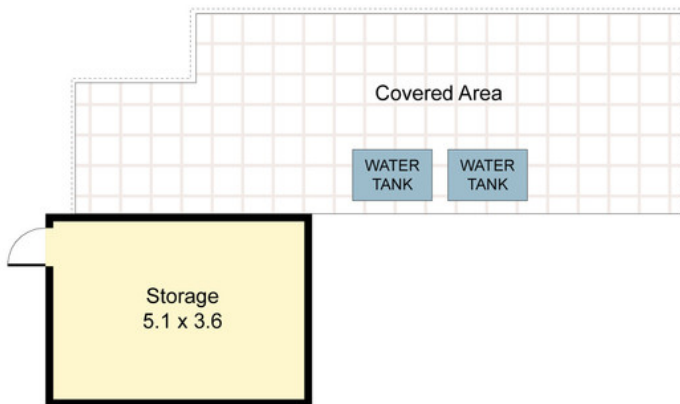
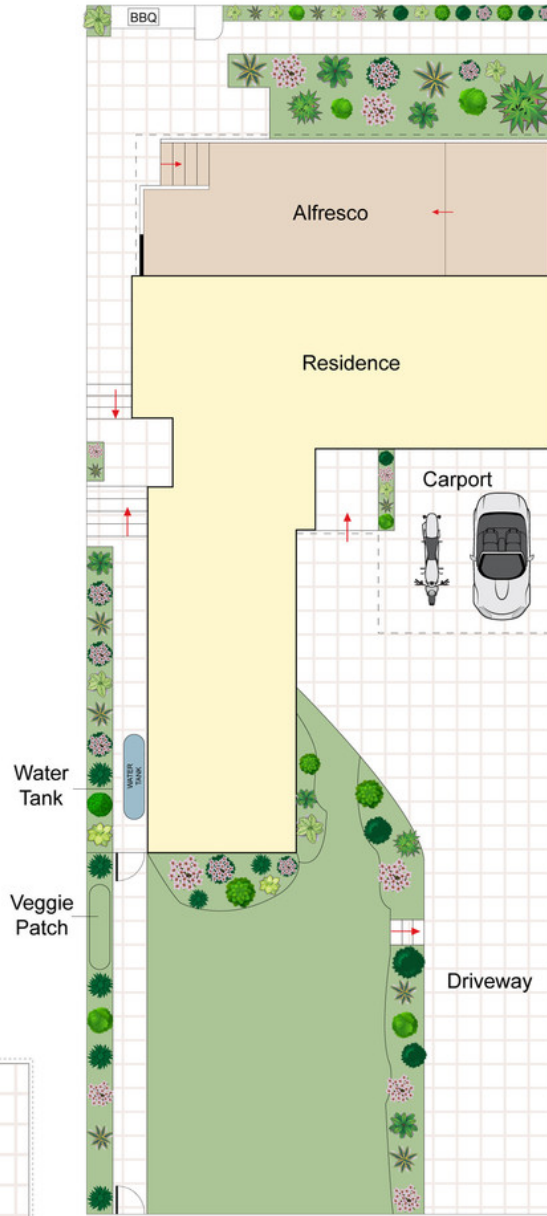
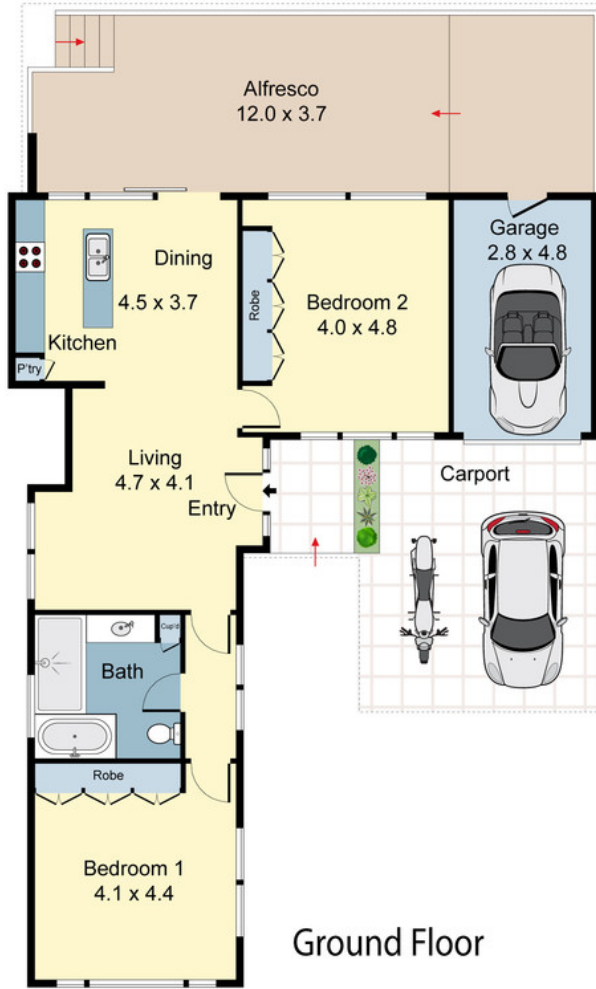
Agent: Filippo D'Arrigo 0416 118 621

Raine&Horne Marrickville 02 9560 7599

rh.com.au/marrickville

Auction: Wednesday, 11 April at 6.30pm

City Fringe Auction Rooms, 9 Missenden Rd, Camperdown



20 Knight Street, Arncliffe

DISCLAIMER: PLANS SHOWN ARE FOR PRESENTATION PURPOSES AND ARE NOT PART OF ANY LEGAL DOCUMENT. ALL MEASUREMENTS AND FIGURES ARE APPROXIMATE.