



Classic art deco home in the vibrant heart of Marrickville



 2  1

## 3/137 Petersham Road, Marrickville

Auctioned for \$600,000 (Mar 13, 2019)

This quality home presents a rare opportunity to secure an art deco residence in the heart of Marrickville. Peacefully set in a boutique complex, the home features an open-plan lounge and dining area, kitchen with gas cooking, and two comfortably sized bedrooms. Filled with character details, it has high ornate ceilings, leadlight windows and polished timber flooring throughout. An excellent buying or investment opportunity, the home is conveniently positioned a short walk from cafes, bars and eateries. The Sydney CBD is easily accessible, with city bus routes and Marrickville Station just two minutes away.

Character art deco residence filled with abundant natural light

Open-plan lounge and dining area, kitchen with gas cooking

Two comfortable bedrooms, bathroom with tub, internal laundry

Polished timber floors, high ornate ceilings, leadlight windows

Excellent investment or buying opportunity in sought-after locale

Conveniently positioned a short walk from cafes, bars, and eateries

**Property ID:** 19948795  
**Property Type:** Apartment

**Filippo D'Arrigo**  
0416 118 621  
filippo.darrigo@rhmarrickville.com.au

Marrickville Station and city bus routes within walking distance

Suburb Profile: Marrickville, 2204

Marrickville has gained a reputation as an ideal place to live thanks to its excellent lifestyle amenities, cultural diversity and handy transport links. Adding to the area's popularity has been the recent increase in new cafes, wine bars and specialty stores, which has given the area a hip, eclectic feel. Marrickville is located just 7km south west of the CBD and 6km from the airport, and is central to the very best of the inner west.

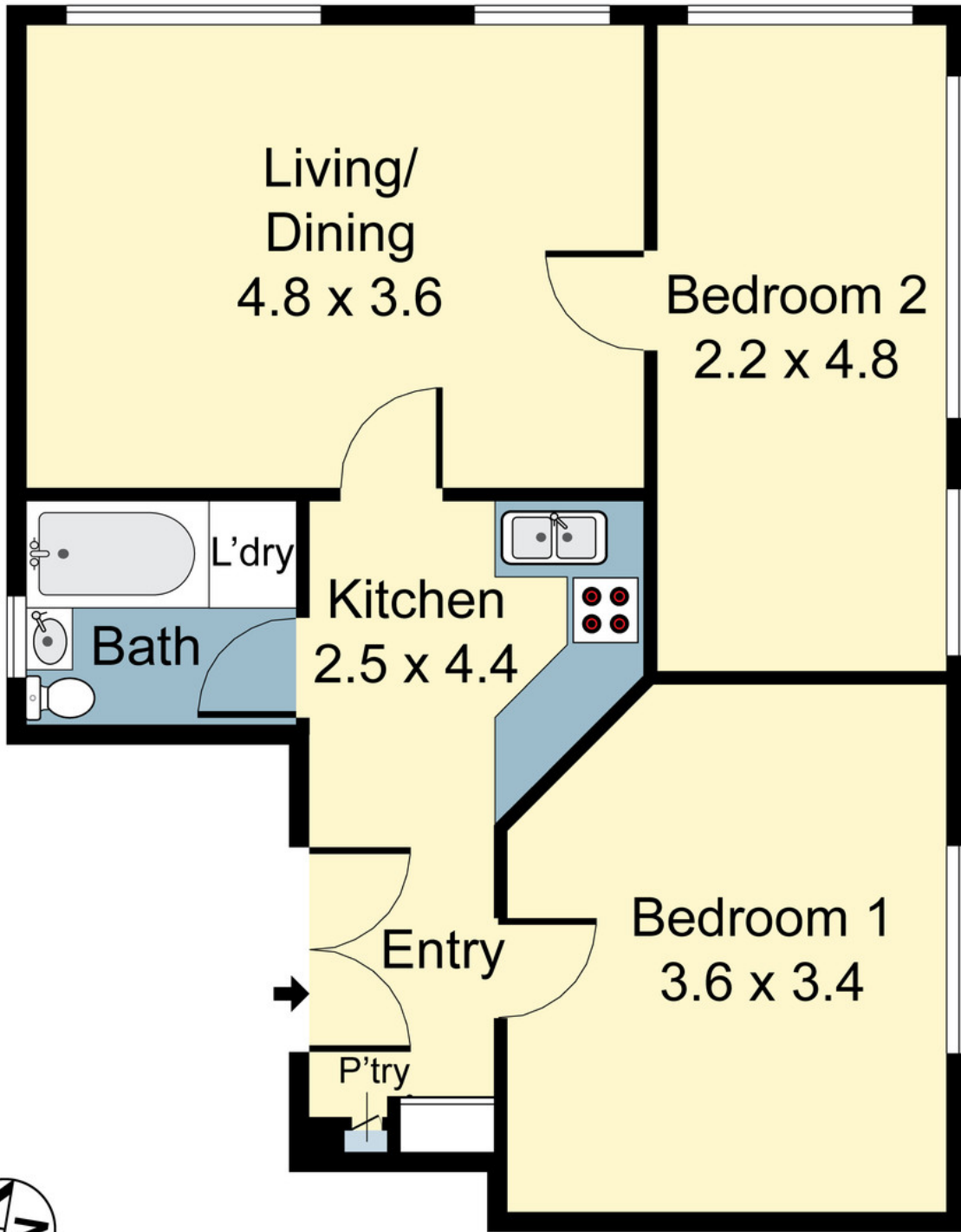
Agent: Filippo D'Arrigo 0416 118 621

Raine&Horne Marrickville 02 9560 7599

<http://www.raineandhorne.com.au/marrickville>

Auction: Wednesday 13 March 2019 at 6.30pm

City Fringe Auction Rooms, 9 Missenden Road, Camperdown



**Raine&Horne**®

Unit 3, 137 Petersham Road, Marrickville

DISCLAIMER: PLANS SHOWN ARE FOR PRESENTATION PURPOSES AND ARE NOT PART OF ANY LEGAL DOCUMENT. ALL MEASUREMENTS AND FIGURES ARE APPROXIMATE.