



## SEAFORD RISE 22 Portsea Drive

3  2  4 

### Open This Saturday 30/11, 1.30 to 2pm

Highly affordable, stylish and spacious modern home with sea views

Be quick to grab this attractive, modern property, boasting sea views from the front. Only ten years old, this contemporary home offers plenty of space, with two living areas, a superb family room leading from the well equipped kitchen, with all mod cons, master bedroom with en-suite and walk in robe, built in robes to the other bedrooms, ducted reverse cycle air conditioning for all year comfort.

Outside, a paved and covered entertaining area is perfect for the summer bbq's, a double garage with remote door and internal access offers great storage, low maintenance gardens to the front and rear.


Only 5 minutes from the expressway and Seaford train station, this is a perfect home for the modern family or investor

Call Rick today for a viewing, 0433 581428

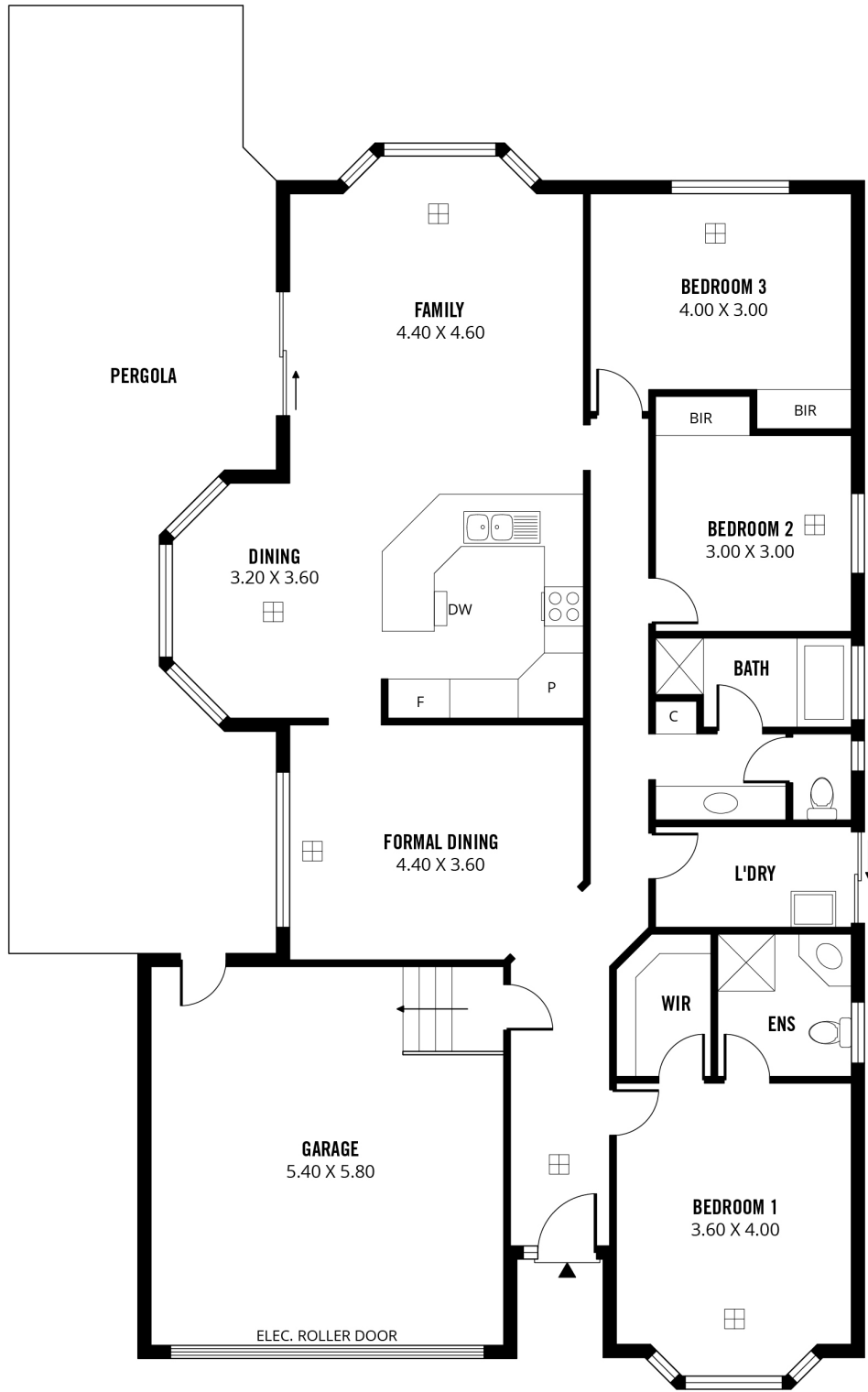
Property ID	L460256
Property Type	House
Building / Floor Area	16
Garages	4
Land Area	420.0 sqm

#### AGENT

**Rick Clennett**

 0433 581 428

 rick.clennett@mcu.rh.com.au



**234m<sup>2</sup>**

**TOTAL**

147m<sup>2</sup>

Living

52m<sup>2</sup>

Pergola

35m<sup>2</sup>

Garage

Scale in metres. This drawing is for illustration purposes only. All measurements are approximate and details intended to be relied upon should be independently verified. Produced by **The Fotobase Group**