

Coastal haven promising fantastic potential



6



3



2

24A Elimatta Road, Mona Vale

Sold Prior To Auction for \$2,230,000 (May 07, 2021)

Peacefully and privately positioned in the quiet streets of much loved Mona Vale, this tantalising family home offers superb comfort while an enviable granny flat to the rear brings with it lucrative income potential for savvy buyers. Set across a low maintenance single level layout, the primary residence is well presented and ready to live in now while offering plenty of scope to further enhance in the future. It enjoys leafy surrounds and promises a sought after coastal lifestyle with a choice of sandy beaches only moments away. The property is also convenient to city bound buses, popular schools and Warriewood Square major shops.

- Generous layout reveals a wonderful choice of family retreats
- Combined living/dining area opens to pergola covered deck
- Serene private garden surrounds for children and pets to enjoy
- Lovely kitchen features breakfast bar and a Masano cooktop
- Four sizeable bedrooms all appointed with built in wardrobes
- Master includes ensuite, main bathroom has separate w/c

Property ID: L5932472

Property Type: House

Garages: 2

Land Area: 586.0 sqm

Ben Spackman

0401326623

kate.akhurst@monavale.rh.com.au

- Granny flat offers large living/kitchen zone plus two bedrooms
- Air conditioning, timber floors, off street parking for two cars
- Convenient to Mona Vale village, golf course, major roads

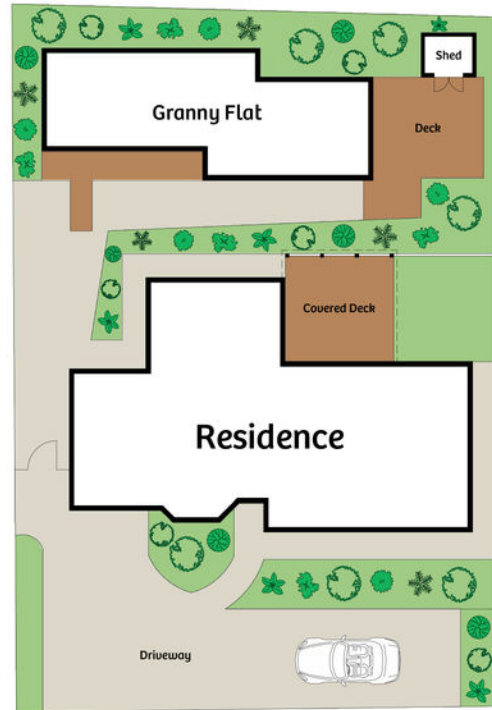
Council rates: \$477.12 per quarter approx

Water rates: \$145.71 per quarter approx

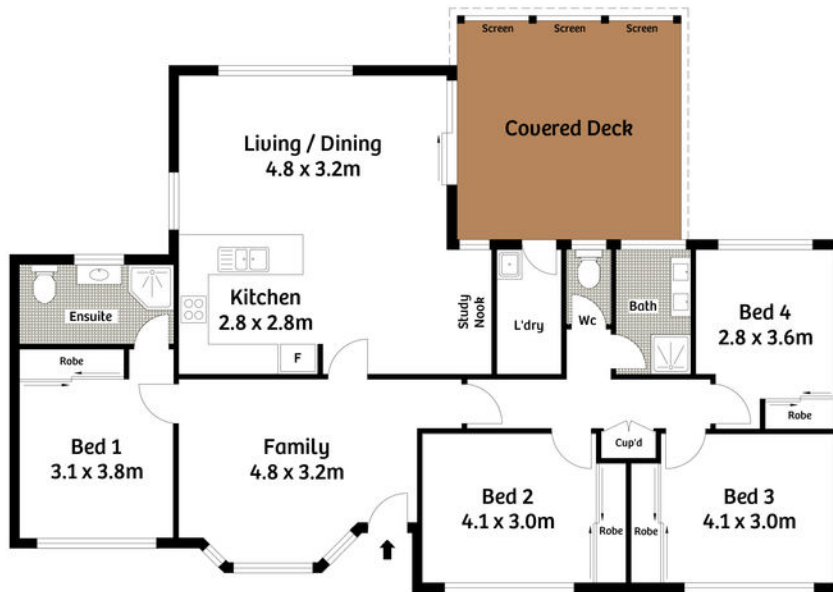
24A Elimatta Road Mona Vale



Granny Flat



Site Plan



Approx. Internal Area 121sqm
Approx. Land Area 586sqm

All information contained herein is gathered from sources we believe to be reliable. We cannot however guarantee its accuracy and interested parties should make and rely on their own enquiries.



Raine & Horne