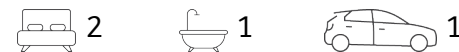




Well Presented Unit Close to Facilities



13/26-30 Richards Drive, Morphett Vale

Sold for \$237,000 (Aug 31, 2020)

Ideally located close to local shops, Wirreanda High School, and bus public transport, this well presented 2BR unit is a must see. A very comfortable low maintenance home absolutely perfect for singles, couples, down-sizers, as well as investors in search of an excellent investment in a popular location close to facilities.

The well-designed layout features 2 very good size bedrooms privately located off the hallway, the master with floor to ceiling built-in robe and ceiling fan. The full size bathroom with shower and separate bath well positioned to both bedrooms, as well as ample built-in storage, and separate w.c.

The cosy open-plan lounge and meals area features split system air conditioner and sliding doors onto the private rear courtyard.

The generous sized kitchen comes fitted with plenty of bench space and cupboards, a handy servery which connects through to the meals area, and a lovely large picture window overlooking the private rear yard. Located just off the kitchen is the separate laundry also with convenient access to the yard.

Outside is easy to maintain with an excellent size rear courtyard for entertaining and a single lock up garage with direct access to and from the backyard.

Property ID: L2405863

Property Type: Unit

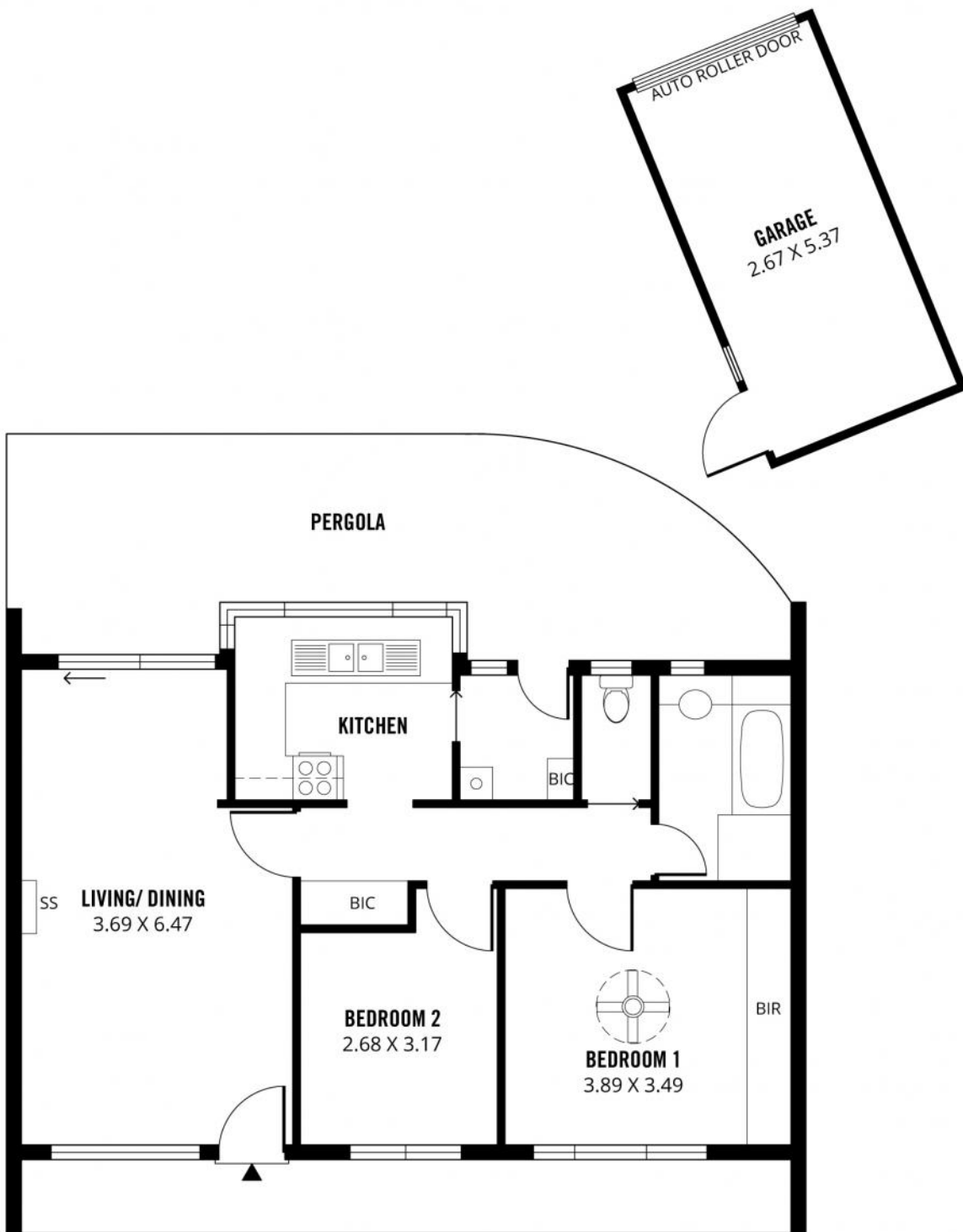
Garages: 1

Alan Gobec

0403 987 853

alan.gobec@mu.rh.com.au

Perfect to live in or let out – don't miss this one! Contact Alan of Raine & Horne Morphett Vale for further details. RLA144653.



129m²

TOTAL

77m²

Living

25m²

Pergola

16m²

Garage

11m²

Porch

Scale in metres. This drawing is for illustration purposes only. All measurements are approximate and details intended to be relied upon should be independently verified. Produced by **The Fotobase Group**