



Lovely Large Family Home / Move in & Make Your Own!

Raine&Horne



4



2



2

14 Coonawarra Avenue, Andrews Farm

Sold

This spacious family home has all the features your family wants, is very well maintained and now ready for you to call home! Open plan in design, with all your needs considered, the main bedroom offers a walk in robe and ensuite in neutral modern tonings + all 3 other bedrooms have built-in robes.

Two separate living spaces that can be closed off for privacy and separate entertaining zones. An easy to maintain yard with garden shed, double garaging with internal access and electronic front panel lift roller door + separate single roller door with access to your rear yard.

Some of the highlights of this home include:

- 4 Bedrooms
- Ensuite to main with walk-in robe
- Robes to all 3 other bedrooms
- Formal Lounge

Property ID: L1138169

Property Type: House

Garages: 2

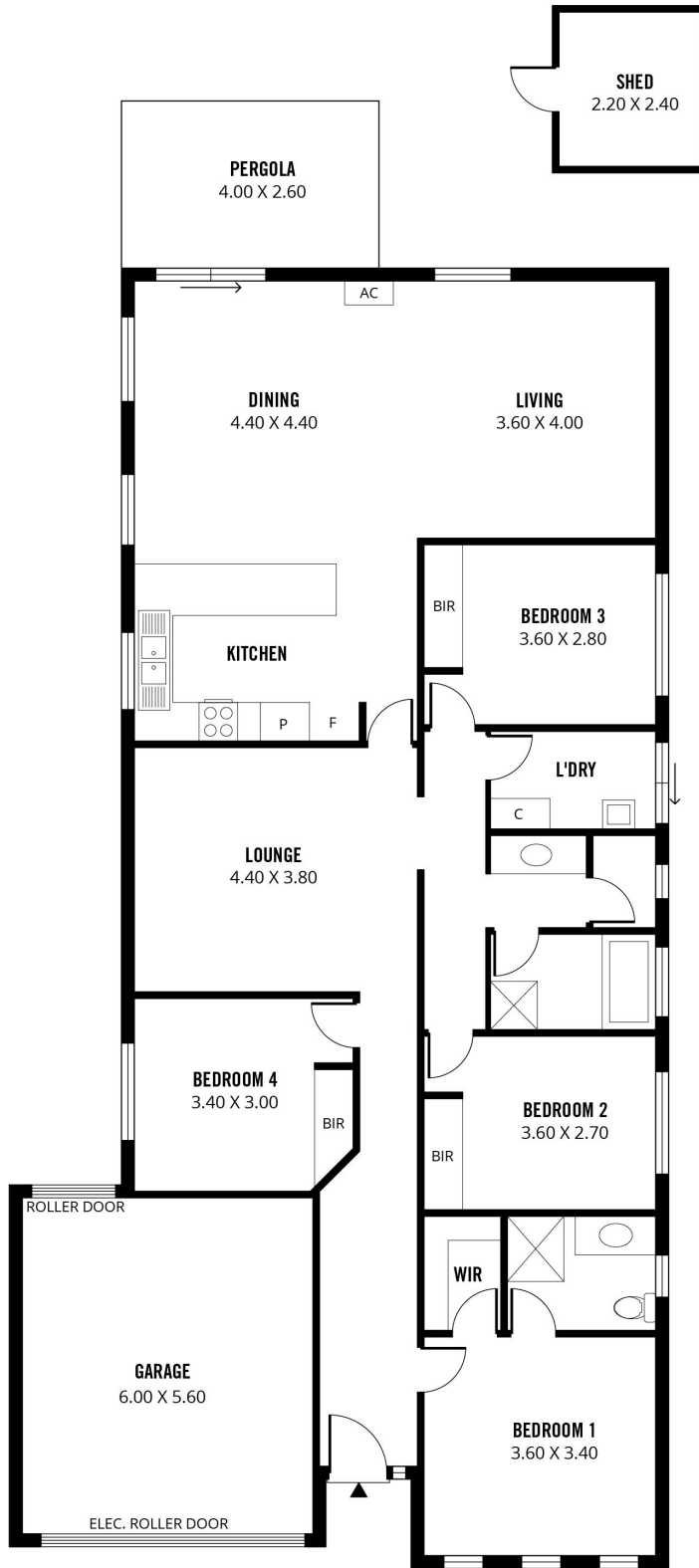
Rebecca Giameos

0419 803 005

rebecca.giameos@mu.rh.com.au

- Casual meals and family room
- Double garage
- Security System
- Split system air conditioner
- Popular 3-way family bathroom
- Low maintenance easy care grounds with an automated watering system
- Grey water tap to front garden
- Fully fenced private yard, children/pet friendly
- Garden shed for handy storage

This well-presented large family home is a must see on your shopping list & is ready for you to simply move in, unpack & start enjoying. Close to local schools and shops including Elizabeth Shopping Centre with not one but two lovely parks/reserves just a few minutes walking distance from your doorstep, 5 mins from the Elizabeth exchange + easy access to the Northern Expressway for your commute into the CBD if needed. Only a thorough inspection will do justice to this home that it deserves!



195m²

TOTAL

153m²

Living

5m²

Shed

27m²

Garage

10m²

Pergola

Scale in metres. This drawing is for illustration purposes only. All measurements are approximate and details intended to be relied upon should be independently verified.

Produced by The Fotobase Group