



UNDER CONTRACT!



15 Coorumbena Crescent, Morphett Vale

Sold for \$430,000 (Feb 17, 2020)

- Super large 3 bedrooms with large Home office, Hickinbotham home
- Ensuite plus 3-way arrangement in the main bathroom
- 3 generous entertaining areas – 2 with access to the rear
- Large family kitchen with 900mm stainless steel cooker, range hood, pura tap, Helagon cooktop

large walk-in pantry, dishwasher plus so many cupboards & benchtops

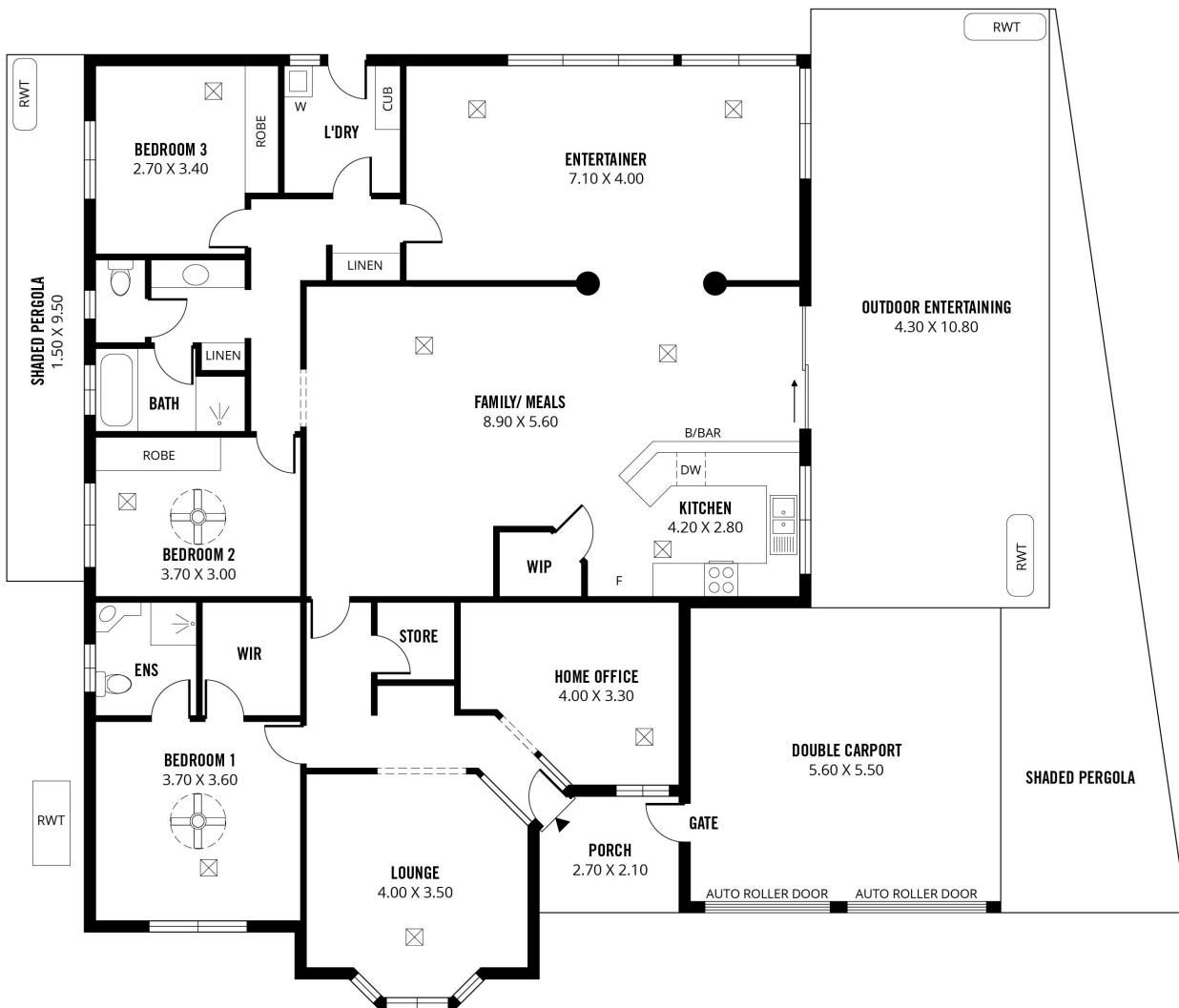
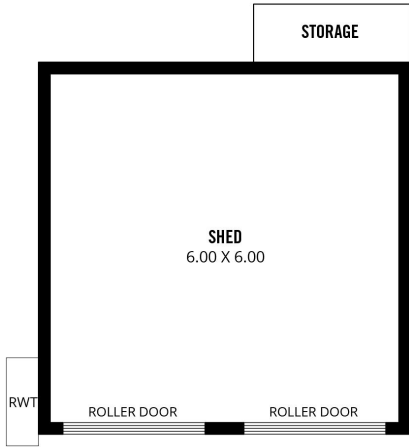
- Good storage throughout with built-in robes & storage cupboards
- Massive 10 kw solar system with 30 panels
- Ducted reverse cycle heating & cooling plus 3 phase on the home
- Large pitched roof pergola
- Double garage/workshop with power and air conditioning (perfect man cave set up)

Property ID:	L1148889
Property Type:	House
Building / Floor Area:	209
Garages:	2
Open Parking:	2
Land Area:	708.0 sqm

Kim Buchanan
0407 286 832
kim.buchanan@mu.rh.com.au

- Double carport with auto roller doors
- Neat & tidy back & front lawns and established garden beds

RLA 144653



Scale in metres. This drawing is for illustration purposes only. All measurements are approximate and details intended to be relied upon should be independently verified.

Produced by The Fotobase Group