



Under Offer...

Raine&Horne

Raine&Horne



3



1



6

3 Essington Street, Flagstaff Hill

Sold

Located just a short walk to the Flagstaff Hill Kindy and Primary School in a lovely quiet location set amongst established trees and good quality homes is this beautifully maintained family home. It really is all about location and facilities at your fingertips!

What makes this home special:

- Double garage with drive through backyard access on one side
- 3 Beds [2 double]
- 2 Living areas
- Extra-large main bathroom with ensuite access and walk-in robe
- Formal dining
- Security shutters to back bedrooms
- Feature brick

Property ID: L2923910

Property Type: House

Garages: 2

Open Parking: 4

Land Area: 835.0 sqm

Rebecca Giameos

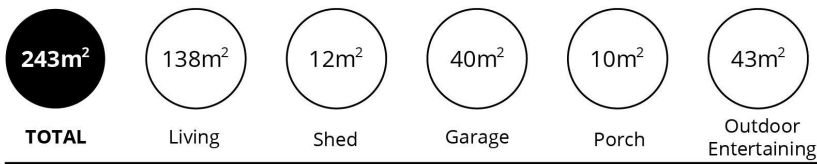
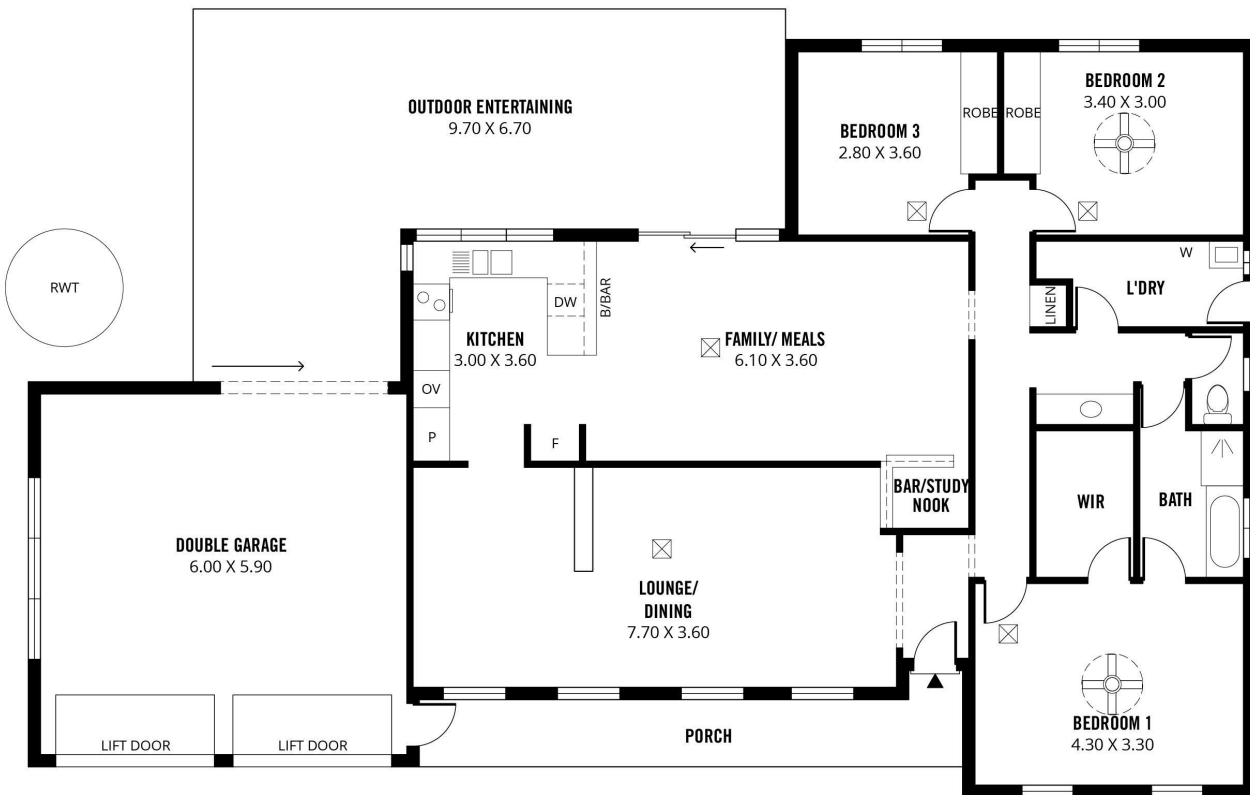
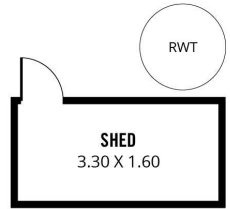
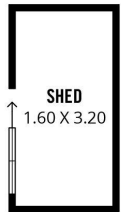
0419 803 005

rebecca.giameos@mu.rh.com.au

- Study nook or bar that services both living areas
- All-weather outdoor gabled pergola with blinds for entertaining overlooking treetops
- Year-round comfort with ducted gas heating and evaporative cooling
- 2x 5000-litre rainwater tanks
- 2kw solar system
- 2 garden sheds
- Secure, undercover parking for 3 cars
- Open/off-street parking for 3 extra cars
- Gutter guard

This quality family home rests just a short drive to your local shopping centre or walk to public transport. Situated on the beautiful Sturt Gorge side of Flagstaff Hill this home is ideally located close to Finders University and Hospital, Westfield Marion, a short 30minute commute into the CBD for business if you're heading North or less than that going South to Port Noarlunga Beach and onto our beautiful southern wineries. Please phone to secure your small group open booking time this weekend.

RLA 144653



Scale in metres. This drawing is for illustration purposes only. All measurements are approximate and details intended to be relied upon should be independently verified.

Produced by The Planas Group