



Affordable Retirement Living

Raine&Horne

Raine&Horne

Raine&Horne



Site 135 Bains Road, Woodcroft Park, Woodcroft

Sold for \$110,000 (Dec 01, 2020)

This property would suit the over 50's who enjoy an active lifestyle or you can just relax and take in all the nature that surrounds you.

This property consists of 2 bedrooms, both with built-in robes, excellent kitchen with lots of cupboards, dishwasher. Stunning bathroom with shower & vanity. Dining area & lounge room with split system heating & cooling. Quality floor coverings and window treatments plus security doors.

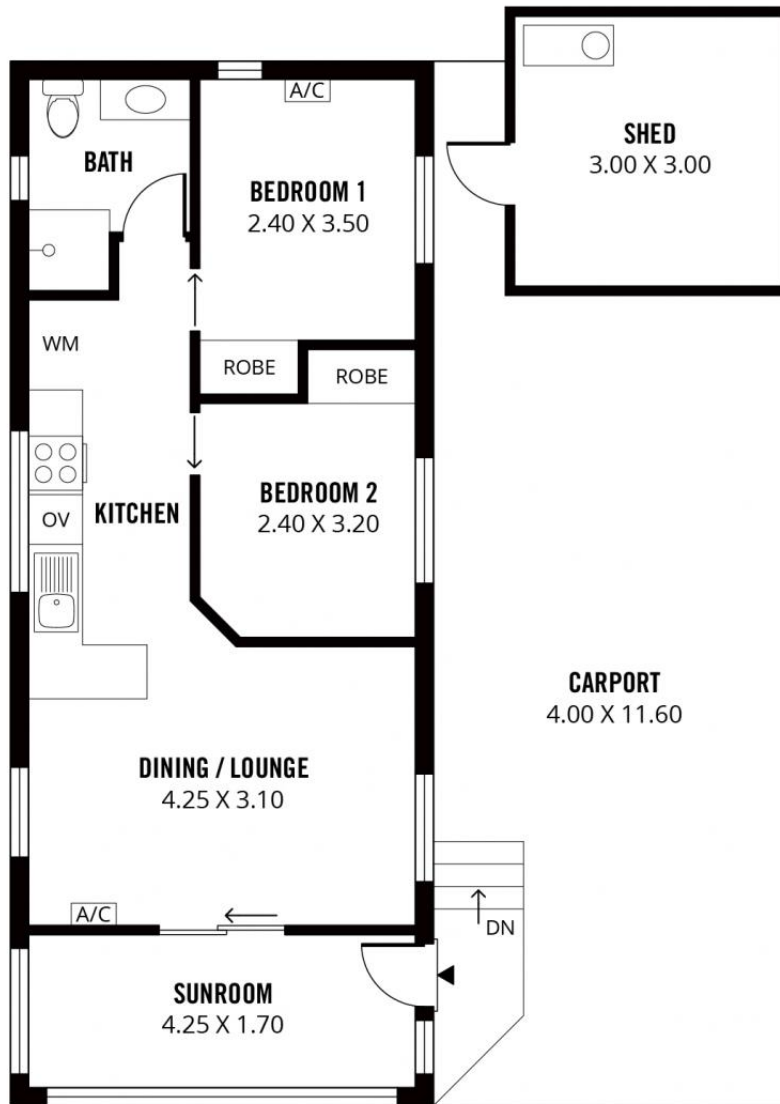
The outside offers a lovely front balcony which can accommodate a table & chair setting to relax and take in this holiday lifestyle.

Also there is a large carport with paved floor, a medium size garden shed fitted out with cold running water and shelves and a small, cute garden bed at the front.

RLA144653

Property ID: L465068
Property Type: Retirement
Carports: 1

Kim Buchanan
0407 286 832
kim.buchanan@mu.rh.com.au



111m²

TOTAL

55m²

Living

10m²

Shed

46m²

Carport

Scale in metres. This drawing is for illustration purposes only. All measurements are approximate and details intended to be relied upon should be independently verified. Produced by **The Fotobase Group**