



MURRAY BRIDGE
13 King Court

3 1 1

More than you'll bargain for!

Offering more than you'll bargain for, this home is anything but the norm and can't be directly compared with others of similar nature in the market. Situated at the end of a quiet, well presented cul-de-sac, this property is neatly finished with the normal inclusions of a modern home build. Outside however, the land is deceptively spacious and comfortably accommodates a pleasant size patio, large rainwater tank, lawn area for the kids and a 6m x 4m shed. Solar panels are an additional bonus making this one that stands out from its competitors!

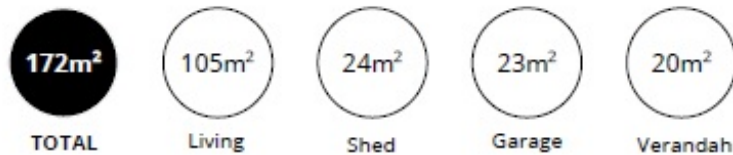
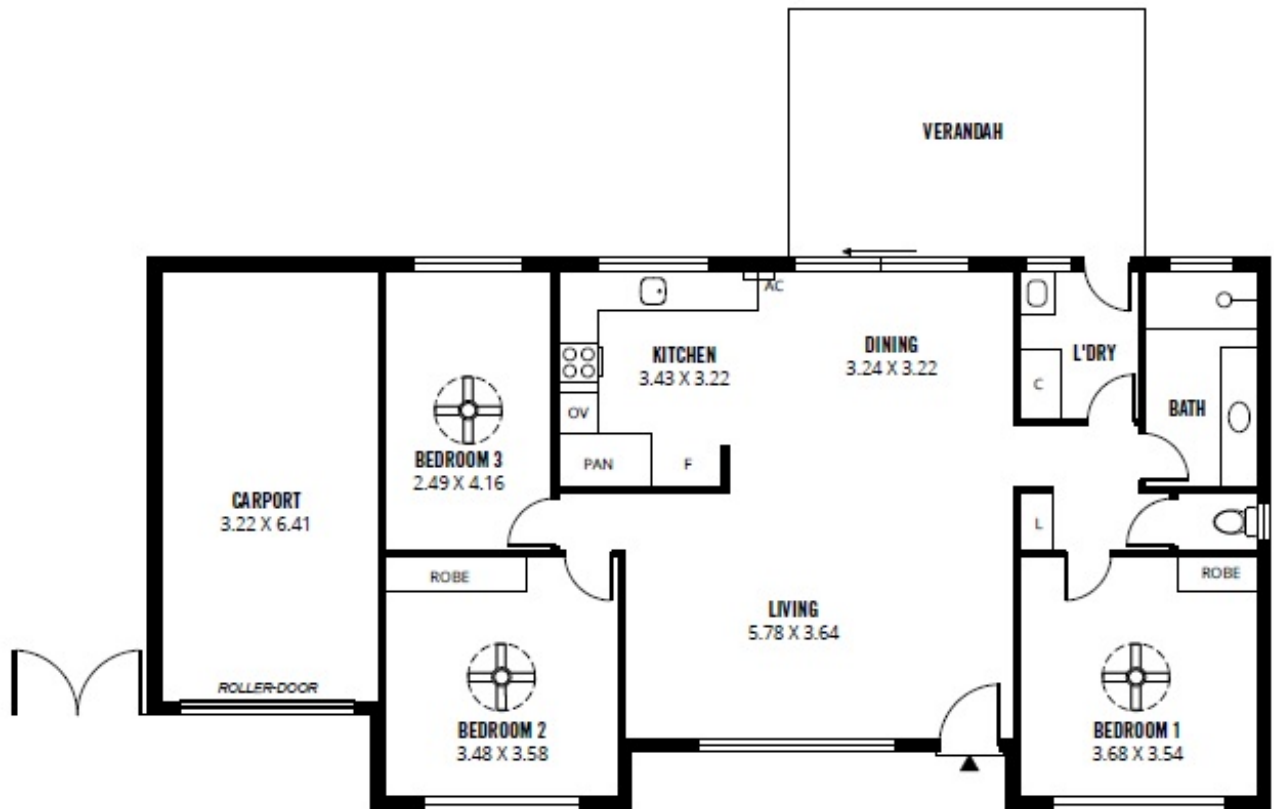
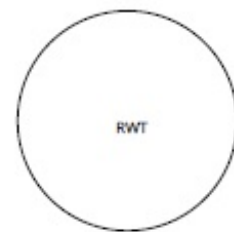
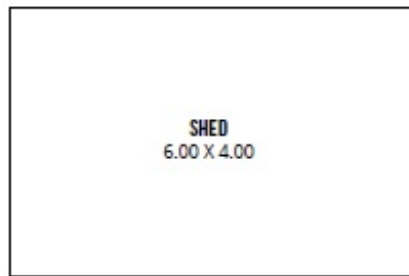
Property ID	L448316
Property Type	House
Garages	1
Land Area	515.0 sqm

AGENT

Michael Cox

0414 543 586

michael.cox@murraylands.rh.com.au



Scale in metres. This drawing is for illustration purposes only. All measurements are approximate and details intended to be relied upon should be independently verified.

Produced by The Fotobase Group