

Holiday, investment.... or live permanently. This units offers it all!



2



2



1

## 40/40 Horizons Drive, Salamander Bay

\$365,000

Set within the grounds of Horizons Golf Resort in Port Stephens which is voted amongst the top 30 favorite courses by golfing fraternity in Australia is this two (2) bedroom unit with views straight down the 18th hole. Enjoy the early morning sun from the North facing balconies as you hear the first crack of the golf ball. The building is secured, with entrance foyer and lift access to your unit, that features two (2) bathrooms, reverse cycle air conditioner, open plan, living, dining and kitchen with 1 allotted car space. The fantastic lifestyle that this resort offers is the 18 hole championship golf course, 2 in-ground swimming pools, tennis court, restaurant, cafe and bar and BBQ area all within easy walking distance to all facilities within the resort. Horizons is a must-play and a great club for your golf membership and an even better place to call home.

If the lifestyle of Port Stephens appeals to you, then this unit is a must to inspect -

Call Tracy 0439 108 009

[www.horizons.com.au](http://www.horizons.com.au)

Every care has been taken to verify the accuracy of the information contained in this advertising copy but no warranty (either expressed or implied) is given by Raine & Horne or its agent as to the accuracy of the contents. Purchasers should conduct their own investigations

Property ID: L906719

Property Type: Unit

Garages: 1

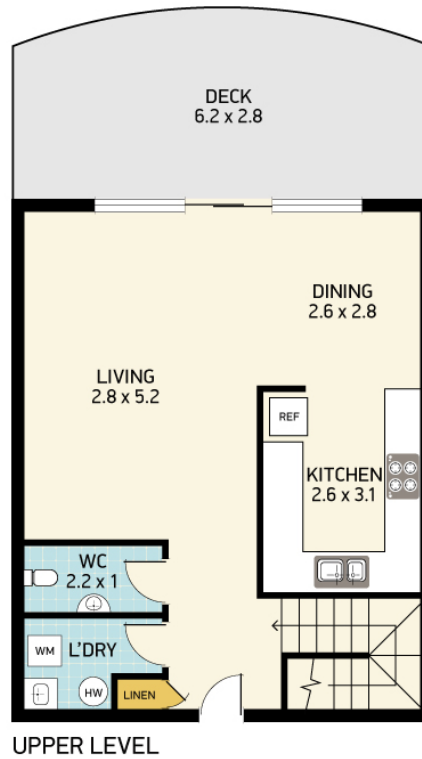
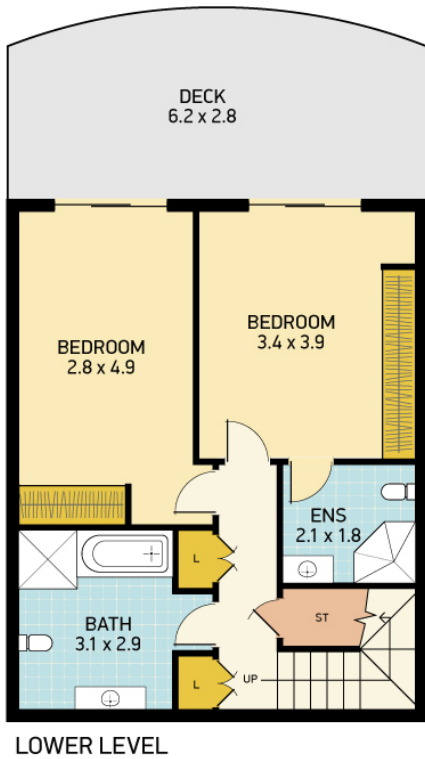
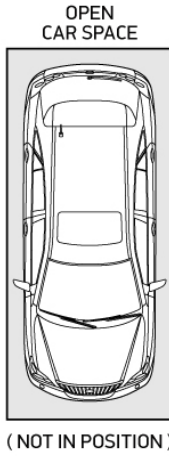
**Tracy Blosdale**

0439 108 009

[tracy.blosdale@nbltp.rh.com.au](mailto:tracy.blosdale@nbltp.rh.com.au)

into all matters relating to the proposed purchase of the property

WM 720W  
REF 800W x 1760H



## 40/40 HORIZONS DRIVE, SALAMANDER BAY

**Disclaimer:** This information has been provided to us from the vendor and or their conveyancer or solicitor, no guarantee is given in respect of its accuracy. Any person viewing this information should make their own enquiries and only rely on those enquiries.  
© 2019 Floor Plan National - All rights Reserved

